



**SOUTHEASTERN
PREMIERE!**

An illustration of a woman with voluminous brown hair, blue eyes, and red lips, wearing a red dress with a white collar and a blue shawl. She is holding a young child with curly blonde hair and blue eyes. The background is dark blue with white snowflakes. In the top right corner, there is a branch of a Christmas tree with green needles, red berries, and gold and white ornaments.

Christmas Dearest

By David Cerda

Production Sponsor: Steve Hagen

DEC. 8-18, 2022

#OutFrontChristmasDearest

www.OutFrontTheatre.com

A Note from Paul



Happy Holidays (Christmas, Chanukah, Kwanza, Boxing Day, Omisoka, and every day in between) from all of us here at Out Front!

Holidays can be a hard time of year for the queer community, but my hope is that all of us have some form of family to be with (either in the “traditional” or chosen sense). Theatre is a form of family too, and every show is a kind of reunion. I want to welcome you to today’s family reunion - know that you are always welcome in our home.

This holiday season, we are presenting what is normally a VERY “traditional” story through the campiest of lenses. As iconic as the character of Ebenezer Scrooge continues to be, I argue that the Queen of Hollywood is just as, if not more, iconic at this point. “Bah Humbug!” is as part of our vocabulary as “No Wire Hangers Ever!” is. In a way, both larger-than-life characters are so familiar to us at this point that they almost feel like family. And, true to real life, sometimes that family is a little dysfunctional. We wouldn’t want it any other way, right? (The correct answer is “Yes, Mommie Dearest.”)

As we look ahead to 2023, I’m excited for all of you to experience the stories we have planned for our stage. Friends, lovers, rivals, and “families”—all on full display in productions that will make you think, laugh and cry. Reunion after reunion after reunion, our family unit continues to grow stronger with each passing year, welcoming in new members and creating more and more memories.

Stay safe this holiday season, and every other day of the year. Reach out to someone who you think needs it. Take time to breathe and enjoy because each moment goes as quickly as it comes. Please enjoy the moments we’ve created for you. That is our gift to you—our family.

Happy Whatever/Whenever You Celebrate,

Paul Conroy

Founder & Producing Artistic Director
Out Front Theatre Company





Presents

Christmas Dearest



WRITTEN BY

David Cerda

STARRING

Emily Nedvidek, Monica Garcia, Blake Fountain, Abby Holland, Brandon Partrick, Jessica Wise, Anna Dvorak, Parris Sarter, Sienna Jade Eger, Posy Leftwich, Isaac Breiding, Ash Piña, Elizabeth Hirsch-Tauber, Cameron Walas

DIRECTOR

Jennifer Alice Acker

MUSIC DIRECTOR

Holt McCarley

CHOREGRAPHER

Precious West

PRODUCTION STAGE MANAGER

Abby Key

ASSISTANT DIRECTOR

Kait Rivas

LIGHTING DESIGNER

Tony Markoch

COSTUME DESIGNER

Tyler Ogburn

WIG DESIGNER

George Deavours

SCENIC DESIGNERS

Paul Conroy & Sydney Lee

SOUND DESIGNER

Brady Brown

DRAMATURG

Zach Tellez

COSTUME ASSISTANT

Tori Morgan

The videotaping or other video or audio recording of this production is strictly prohibited.



This program is supported in part by Georgia Council for the Arts through the appropriations of the Georgia General Assembly. Georgia Council for the Arts also receives support from its partner agency - the National Endowment for the Arts. This program is supported in part by the City of Atlanta Mayor's Office of Cultural Affairs. Funding for this program is provided by the Fulton County Board of Commissioners.



Christmas Dearest



SETTING & TIME: Hollywood, 1953

There will be one 15-minute intermission.

Cast & Crew

CAST

Joan Crawford..... Emily Nedvidek
 Carol Ann.....Monica Garcia
 Bette Davis & others..... Blake Fountain
 Christina Crawford & others.....Abby Holland
 Olive & others..... Tyler Sarkis
 Teeny Teena & others.....Brandon Partrick
 LB Mayer & others..... Jessica Wise
 20's Joan & others..... Anna Dvorak
 Vernita & others..... Parris Sarter
 Understudies.....Sienna Jade Eger,
 Posy Leftwich, Isaac Breiding,
 Ash Piña, Elizabeth Hirsch-Tauber,
 Cameron Walas

PRODUCTION CREW

Director Jennifer Alice Acker
 Music Director Holy McCarley
 Choreographer Precious West
 Production Stage Manager..... Abby Key
 Assistant Director..... Kait Rivas
 Lighting Designer Tony Markoch
 Costume Designer..... Tyler Ogburn
 Wig Designer George Deavours
 Scenic Designers Paul Conroy &
 Sydney Lee
 Sound DesignerBrady Brown
 Dramaturg.....Zach Tellez
 Costume AssistantTori Morgan
 Projection Designer..... Robby Myles
 Master Carpenter..... Matt Brohammer
 Photographer Sydney Lee
 Videographer Saturnblu Productions
 Public RelationsJMF Communications
 Graphic Designer..... Brandon D Hunt

SPECIAL THANKS

Jay Reynolds & Michael Barnett, Jeff Allen, Michael Etheridge, Bretta Ogburn, Wendell Scott, Alliance Theatre, and Georgia State University's School of Film, Media, and Theatre

We apologize for anyone who may have been accidentally omitted from this program.



CHRISTMAS DEAREST MUSICAL NUMBERS

ACT ONE

"I'm Mary!" Joan Crawford and Chorus

"Christmas Can Be Wonderful" Little Joan

"Santa, Won't You Come?
(Down My Chimney)" 20's Joan and Olive

"What Is the Meaning of Christmas?" Carol Ann, Vernita, and Kids

ACT TWO

"Two Old Broads" Joan Crawford and Bette Davis

"Merry Christmas Everyone
(Except Christina)" Full Company

"Christmas Disco Megamix" Full Company

Director's Note



Joan was on the naughty list to begin with. There is no doubt whatever about that. Yes, old Joan was as naughty as a nutcracker.

Mind! I don't mean to say that I know, of my own knowledge, what there is particularly naughty about a nutcracker. I might have been inclined, myself, to regard an elf on the shelf as the naughtiest piece of Christmas decor in the trade. But the wisdom of our ancestors is in the simile; and my unhallowed hands shall not disturb it, or the Country's done for. You will therefore permit me to repeat, emphatically, that Joan was as naughty as a nutcracker.

This must be distinctly understood, or nothing wonderful can come of the story I am going to relate!

I would like, if I may, to take you on a strange journey. It seemed a fairly ordinary night when Joan Crawford and her daughter, Christina Crawford, left MGM studios that late December evening for a night in.

With Christina and the twins nestled all snug in their bed,
While visions of Oscars danced in Joan's head;
And Bette in her baby doll and Olive in her taps,
And LB on his casting couch, Joan sitting in laps...

It's true there was the spirit of Christmas hanging in the air...
dark, magical, pendulous...

It's true also Joan was badly in need of some Christmas magic...

With the help of some not-so-naughty, not-so-nice, spirits of Joan's past, present and future - on this Rainbow Tour through time - will even the naughtiest of Joan Crawford's be able to turn nice?

On this fateful Christmas Eve, will Joan learn to honor Christmas in her heart, and try to keep it all the year!? Will she ever learn to live in the Past, the Present, and the Future, where the Spirits of all Three shall strive within her?? Will she not shut out the lessons that they teach!!!!??

Only time (and dancing, dammit!) will tell...

So on this night-in, take your steak rare and leave the wire hangers at the door. Welcome to Christmas Dearest, where technicolor soundstages meet Met Gala camp on the dark midnight docks of the deeply unhinged. On a Christmas night in...

It will be a night-in to remember for a very long time!

: Ominous Thunder Claps :

Jennifer Alice Acker
Director, *Christmas Dearest*

COMMITMENTS & VALUES

MISSION

Out Front Theatre Company's mission is to tell LGBTQIA+ (Lesbian, Gay, Bisexual, Transgender, Queer, Questioning, Intergender, Asexual) stories.

VISION

Out Front Theatre Company's vision is to strengthen the LGBTQIA+ community in Georgia by exploring and celebrating the universal human experience through the lens of gender and sexuality.

EQUALITY, DIVERSITY, & INCLUSION COMMITMENT

The staff and board of Out Front Theatre Company want to put the following metrics in place so that we can track them to completion. We want our stakeholders and our patrons to see real results.

- We want to have representative board members from black and brown communities, as well as gender nonconforming representatives and increase that representation by at least 10% every year until we reach a goal of above 50%.
- We want to produce, support, or promote at least 2 shows/events from creatives of color every year and increase that number by at least 20% every year.
- We want to increase our presence in communities of color and in women's communities through intentional outreach. We can do this by creating a communication strategy to expand our patronage. To that end, we will recruit a community outreach intern or staff member to help achieve this goal.
- We want to increase our intersectional involvement by partnering with other socially progressive nonprofit organizations to collaborate on community events. The goal is to have at least one partner event per year with an ultimate goal of three per year.

Please visit
www.OutFrontTheatre.com
to learn more.



LAND ACKNOWLEDGMENT

We are gathered on the unceded land of the Mvskoke (Muscogee/Creek) peoples. We ask you to join us in acknowledging the Mvskoke community, their elders both past and present, as well as future generations. Out Front Theatre Company also acknowledges that it was founded upon exclusions and erasures of many Indigenous peoples, including those on whose land this institution is located.

This acknowledgment demonstrates a commitment to beginning the process of working to dismantle the ongoing legacies of settler colonialism.



THE MUSCOGEE NATION

**For more information on this nation,
as well as how to support to them,
please visit www.muscogeenation.com**



I WANNA FUCKING TEAR YOU APART

SOUTHEASTERN PREMIERE!

Samantha and Leo are a team—best friends and roommates, fat girl and gay guy against the world—until a new friend upends their cozy co-dependent diet of mutual self-loathing and *Grey's Anatomy* marathons. An ode to the complications of friendship in its many fucked-up forms, with a special nod to a kind of love that sometimes looks a lot like rage.

By Morgan Gould

FEB 2-18, 2023

Tickets: \$15 and up
Out Front Theatre Company
999 Brady Avenue, Atlanta



www.OutFrontTheatre.com

CAST & CREW BIOS

CAST

EMILY NEDVIDEK *She/Her* (Joan Crawford)

is thrilled to be back in her true vodka-soaked form. Previous Out Front Theatre credits include: Joan Crawford in *Christmas with the Crawfords*. Select Atlanta credits: *Mac|Beth* (Synchronicity), *Alabama Story* (Georgia Ensemble Theatre), *Wizard of Oz* (Atlanta Lyric), and *Bullets over Broadway* (GET). Thank you to Jen for leading this unhinged adventure, the cast for turning every joke into a bit, and Paul for giving us a playground for utter chaos. Love to her family, Mark, and all her adoring fans. She would rather be here with you tonight than anywhere else in the world! @enedvidek

MONICA GARCIA *She/Her* (Carol Ann) is excited to be on stage making her Out Front Theatre debut! She is an alumna of The University of West Georgia's Theatre Company. Theatre Credits: Out Front Theatre: Debut. Atlanta: *Roe* (Horizon Theatre Company), *Pride: A New Musical workshop* (Atlanta and NYC). UWG Credits: *Home, Macbeth, Godspell, Intimate Apparel, Scavenger Hunt*, and *Spring Awakening*. Immense love to her family and friends for their unconditional love and support.

BLAKE FOUNTAIN *He/Him* (Bette Davis & others) is feverishly enraptured to be back at Out Front. Previous Out Front Theatre credits include: *The Golden Girls: The Lost Episodes - The Holiday Edition, Bright Colors & Bold Patterns*, and *Christmas with the Crawfords*. You also may have seen his alter-ego, Tugboat the Queen, at a Balls to the Wall Bingo, Gayme Night, or out harassing pigeons for their opinions on Jerry Herman's 1969 musical *Dear World*, starring Angela Lansbury. Previous Atlanta credits include: *The Wizard of Oz; Guys and Dolls* (Atlanta Lyric), *Mary Poppins* (City Springs Theatre Co.), *Bullets Over Broadway; Leading Ladies* (Georgia Ensemble Theatre), *Clue: On Stage; I Love You Because* (Marietta Theatre Company). Buckets of love to Nana, Butter, Sam, and my entire Out Front family.

Follow him @nonsmokingpartyoftwo and @tugboatthequeen

ABBY HOLLAND *She/Her* (Christina Crawford & others) is so excited to be back at Out Front for another Holiday season! Previous Out Front Theatre credits include: *Christmas with the Crawfords, Red: A Crayon Musical, and Sordid Lives*. Previous Atlanta credits include: *Ride The Cyclone, Naked Mole Rat Gets Dressed: A Rock Experience* (Alliance Theatre); *Mac Beth* (Synchronicity Theatre); *Head Over Heels, The Crucible, Little Shop of Horrors, Company, Appropriate* (Actor's Express); *Freaky Friday* (Horizon Theatre); *Fun Home* (Out of Box). IG: @abbyholland

TYLER SARKIS *He/Him* (Olive & others; Dance Captain) could not be more thrilled to be creating joy and life with these stunning artists. Healthcare by day, artist by night - he is so grateful to be working with an arts organization that is inclusive, fosters creativity and representation, and walks the talk. Recent credits : *Homos, or Everyone in America, Xanadu* (Out Front), *Mary Poppins, Holiday Inn, Gentlemen's Guide...* (City Springs) "Whatever you think you can do or believe you can do, begin it. Action has magic, grace, and power." - Goethe || @yas_tyler

BRANDON PARTRICK *He/Him* (Teeny Teena & others) is an actor, musician, and all-around bon vivant, having performed with ATL theatres such as Synchronicity, Alliance, Theatrical Outfit, 7 Stages, and many more. He has also performed in film, tv, and commercials about water conservation and various state lotteries. Brandon is honored to tread the boards once more in the role of a lifetime; a sickly child with a heart of gold. Much love to Jen and the family.

JESSICA WISE *She/Her* (LB Mayer & others) is thrilled to return to the Out Front stage! You may recognize her from the last production of *Kinky Boots*. She recently wrapped a season contract at Stage Door

Theatre (2021-2022), where she performed as Lady Capulet in *Romeo & Juliet*, Lady Bracknell in *The Importance of Being Earnest*, and more. By day, she works as a copywriter for a local agency and runs her e-magazine for millennial professionals, Audacity Magazine & Events (audacitymagazine.org, @audacitymagonline on Instagram).

ANNA DVORAK *She/Her* (20's Joan & others; Vocal Supervisor) is thrilled to be back home on the Out Front Theatre stage. She was most recently seen here at Out Front celebrating Judy Garland's 100th birthday and as Kira/Clio in *Xanadu*. Other credits include: *The Pretty Pants Bandit* (Georgia Ensemble), *Wonderland* (Synchronicity), *Christmas with the Crawfords* (Out Front), *Between Riverside and Crazy* (True Colors Theatre Company). She thanks her family (biological, married, and chosen) for their seemingly endless enthusiasm for her work.

PARRIS SARTER *She/Her* (Vernita & others) is excited about making her debut at Out Front Theatre. She has worked extensively here in Atlanta and some of her credits included: *Booty Candy* and *Angels in America* (Actor's Express), *Eclipsed* (Synchronicity Theatre), *The Cake and Square Blues* (The Horizon), and *The Revolutionists and Angry Fags* (7 Stages), and *Wrong River* (Flint Repertory). She just collaborated with Hush Harbor Labs in creating her one woman show: *Eunice in Paris: A Nina Simone Story*. Thank you for supporting live theater and wishing everyone a happy holiday!

SIENNA JADE EGER *She/They* (Joan Crawford u/s) is so excited to be on the Out Front stage again. Previous Out Front Theatre credits include Ensemble Swing in *Kinky Boots*. Previous Atlanta credits: Minnie Wright in *Jury of Her Peers* (Theatre Arts Guild). Film credits: *Her and Him* (GSU), *Sleep* (Real Imaginary Productions), *Don't Worry Paul* (GSU), *Living the Dream* (GSU), *How to Laugh* (GSU). Sienna would like to thank her dear friends and family for all of their support, and the wonderful people at Out Front Theatre for this opportunity. Follow her @siennajadeeger on Instagram.

POSY LEFTWICH *She/Her* (Christina Crawford u/s) is pumped to return to Out Front. Previous Out Front Theatre credits: *Kinky Boots*. Previous Atlanta credits include: Leah in *Call Number* (Horizon Theatre Company's NSYPF) and Vera in *She Kills Monsters* (Georgia State University). Christmas may be Posy's second favorite holiday, but she is deathly afraid of The Elf on the Shelf. All the love to her family, friends, and fiancé, but mostly to her dog Ringo. You can follow her adventures on Instagram, @posythefairie.

ISAAC BREIDING *He/Him* (Olive/Teeny Teena u/s): Out Front Theatre: Debut. Credits include: Tin-Man in *The Wiz* (Alexander High School), Mr. Mushnik in *Little Shop of Horrors* (Carrollton Center for the Arts), Pinocchio in *Shrek the Musical* (Alexander High School), and Theo in *School of Rock* (Carrollton Center for the arts). You can follow Isaac on Instagram @isaac.breiding.

ASH PIÑA *She/They* (Bette Davis/LB Mayer u/s) is delighted to be a part of this amazing production! Previous Out Front Theatre credits include: *Kinky Boots*. Previous Atlanta credit: *Food Justice* (Georgia State University). Previous Educational credits: Alliance Theatre Summer Camp [Teaching Assistant/ Artist], and Georgia State University Theatre Student [Currently a Graduating Senior]. They would like to thank her loving family, their supportive best friend, Eric, her diligent Therapist, and their adorable cat, Sherlock, for being a daily motivation. Follow them @ash4ashs on Instagram!

ELIZABETH HIRSCH-TAUBER *She/Her* (Vernita u/s) SAG/AFTRA member. Out Front Theatre: Debut. Elizabeth is a local filmmaker, actor and choreographer, and is totes excited to be joining this show. Previous Atlanta acting credits include: *Circle Mirror Transformation* (OnStage Atlanta), *New Voices Fest* (Alliance Theatre), *And Then They Came For Me...* (Georgia Ensemble Theatre), *A Midsummer Nights Dream* (Atlanta Classical Theatre), *My Favorite Year* (Gainesville Theatre Alliance). Regional: Barefoot in *Nightgown By Candlelight* (Sidewalk Studio Theatre), *Pretty* (Alliance of L.A. Playwrights). TV/Film: *Bloodlands* (Discovery ID), *The Mentalist* (CBS), *12 Months* (Feature), Apple i-pad-

Little Mermaid (National Spot). Love to brother Ethan, all her friends, her agents at Houghton, and her fiancé Andrew who went to Harvard Law School and is really good looking:-) Find her on IG and TikTok @liztheavenger

CAMERON WALAS *She/Her* (Carol Ann/20's Joan u/s) is a theatre student at Georgia State University and is SUPER excited and grateful for the opportunity to be an understudy at Out Front Theatre! Out Front Theatre: Debut. Regional theatre credits: *Urinetown* (WC Theatre) Educational theatre credits: *A Midsummer Night's Dream* (CCAC), *White Christmas* (CHHS). Instagram: @cameronwalas, Represented by: Barbara Garvey/East Coast Talent Thank you to Noah and mom for always loving and believing in her!

PRODUCTION CREW

JENNIFER ALICE ACKER *She/Her* (Director), returns to direct another Crawfords Christmas extravaganza after last directing at Out Front for *Christmas with the Crawfords*. Jennifer Alice Acker is an Atlanta based director and actor, and the Executive Director of Eclectic Music, an intown music school. She is a graduate of Florida State University, holding dual degrees in Music and Theatre, and has studied with Theatre Academy London and apprenticed at the Atlanta Shakespeare Company. Recent directing credits include *Lizzie* at Actor's Express, *Wonderland* and *Mac|Beth* at Synchronicity, *Citizen's Market* at Horizon Theatre, *Wonder Women* for Studio Tenn and the Atlanta Music Theatre Festival, and *The Last Time We Were Here* for The New York Music Theatre Festival. Peep more or say hullo at www.jenniferaliceacker.com. Big Love to this entire creative team and cast. Merry Christmas ya filthy animals!

HOLT MCCARLEY *He/Him* (Music Director) is excited to make his Out Front Theatre debut! Atlanta MD Credits: *The Secret Garden* (Jennie T. Anderson), *Company* (KSU), *Next to Normal* (JTA), *Jungle Book Jr.* (Aurora), Lippa's *The Wild Party* (JTA), and *The Last*

Five Years (JTA). Many thanks to Paul and Jen for trusting him with this wild and wacky show! Follow him @_hawlt on Instagram.

PRECIOUS WEST *She/Her* (Choreographer) is excited to make her choreographer debut at Out Front. You may have seen her in *Xanadu* and *The Golden Girls: The Lost Episodes - Holiday Edition*. Choreography: *Heathers: The Musical*, *Urinetown* (Actor's Express). ATLANTA: Actor's Express, Synchronicity Theatre. REGIONAL: *The Polar Express Train Ride* (Warner Bros./Rail Events), *In The Heights* (Measure for Measure Theatre Co). EDUCATION: BFA Musical Theatre, Brenau University (Gainesville Theatre Alliance); MBA Marketing, Brenau University. FILM/TV: Respect / Aretha Stunt Double (Respect Productions LLC), FattMerchant Commercial / Concierge (Elevate Media). Precious is a Performer, Choreographer & Teaching Artist. Follow her journey: @gangstapresh www.preciouswest.com

ABBY KEY *She/Her* (Production Stage Manager) is thrilled to work on another production at Out Front Theatre! Previous Out Front credits include: *warplay*, *Golden Girls: The Lost Episodes - Holiday Edition*, and *Boys in the Buff*. Previous NYC credits include: *Between the Tigris and the Euphrates* (Poetic Theatre Productions), *Survey* (LaGuardia PAC), and *Lemon Meringue* (Rich Ryan Productions, LLC). Previous Regional credits include: *Nice Work If You Can Get It* (Peach State Summer Theatre!), *Mary Poppins* (Peach State Summer Theatre!), *42nd Street* (Peach State Summer Theatre!), *Lombardi* (Kentucky Stages), *Carrie the Musical* (White Plains PAC). Much love to Benjamin for his unyielding love and support! Follow her on Instagram @stgmngr4life.

KAIT RIVAS *They/Them* (Assistant Director) is ecstatic to be working again with Out Front Theatre in their assistant directing debut! Previous Out Front Theatre credits include: *When Last We Flew*, *All the Natalie Portmans*, *The Golden Girls: The Lost Episodes - Holiday Edition*, *I Am My Own Wife*, *Spectrum Spotlight Series*, and *The Most Fabulous Story Ever Told*. Upcoming: *Red: A Crayon's Story the Musical*. Previous Atlanta

credits include: *Soar Spot* (Act for a Change), *Wolf at the End of the Block* (Theatrical Outfit), *Everyone Calls Her Grace* (Theatre Emory), *Iphegnia in Quarantine* (Working Title Playwrights), *Pillow Talk* (Alliance Theatre Anywhere), *La Gringa* (Marietta's New Theatre in the Square), *Entertaining Lesbians*, *Working the Musical*, and *Evil Dead the Musical* (Out of Box Theatre). Follow them @kaitrivers on Instagram! Much love to the cast and crew and all my friends and family. Remember to always tell your story.

TONY MARKOCH *He/Him* (Lighting Designer) is very excited to work on his first show with Out Front Theatre and in Georgia! Having recently moved to Atlanta, Tony had worked as both a designer, technician, stand-up comedian and actor in North Carolina. His previous credits include *Shrek: The Musical*, *Accord(ing)*, *Ink*, and *Bright Star*. He is very thankful to his family, his friends, and his mentors Josh Reaves and the late John McIlwee for always pushing and supporting him. If you would like, you can follow him on Instagram @toby.markovich and TikTok/ Twitter @tobymarkovich to keep tabs on his jokes, designs, and career. Cheers!

TYLER OGBURN *He/Him* (Costume Designer) is excited to play a new role at Out Front Theatre this time around. Previous Out Front Theatre credits include taking a lot of photos as Resident Photographer! Costume Design Credits include: *A Midsummer Night's Dream* (Venture Shakespeare), *Twelfth Night* (TheatreUNCA), *Richard III* (TheatreYHC). Thanks to Paul, Brady, Jen, Tori and Astrid. Follow Tyler @tylerogburn on Instagram.

GEORGE DEAVOURS *He/Him* (Wig Designer) is delighted to working with Out Front again, after his last work on *Kinky Boots*. An actor as well as a professional hair and wig designer, he has created hair designs for more than 300 shows such as *Mamma Mia!*; *Anything Goes!*; *Dreamgirls*; *The Producers*; *42nd Street*; *Into the Woods*; *Thoroughly Modern Millie*; *Cabaret*; *The Mikado*; *La Cage aux Folles*; *White Christmas*; *A Little Night Music*; *Legally Blonde*, and *Gypsy* to name a few. He recently was Hair Department Head for

LEGO Masters, Season 3. By day, George has a studio at French Door Salon & Spa in Duluth, Ga.

PAUL CONROY *He/Him* (Co-Scenic Designer) is the Founder and Producing Artistic Director of Out Front Theatre Company, Georgia's LGBTQIA+ focused theatre company. Originally from the Boston area, he holds a BA in English/Writing with a Minor in Theatre from Long Island University in addition to both a MA in Directing from Roosevelt University and a MFA in Directing from the University of Idaho, and as a playwright his original musical, *The Ethel Merman Disco Christmas Spectacular!* (which he also directed) premiered at Out Front Theatre Company in December of 2018. Other select directing credits at Out Front include *Priscilla, Queen of the Desert: The Musical*, *The Most Fabulous Story Ever Told*, *The View UpStairs*, *La Cage aux Folles*, *Xanadu* and most recently the smash hit *Kinky Boots*. Paul teaches courses in Theatre at Georgia State University, sits on Historic Atlanta's LGBTQ Historic Preservation Advisory Committee and recently began his fifth year term as a founding member of the City of Atlanta's LGBTQ+ Advisory Board for which he co-chairs the Arts, Culture and Entertainment subcommittee. He was named one of Georgia's 100 Most Influential LGBTQ+ people in 2020 and has been featured in The New York Times, The Times of London and numerous other media outlets speaking about the importance of queer centered arts. Paul is also the co-founder of the Queer Theatre Alliance, a national coalition of LGBTQ+ centered theatre companies.

SYDNEY LEE *She/Her* (Co-Scenic Designer) - How would you like to pull this plum out of your pile of Christmas gifts? In its full size, it is even more beautiful and amusing that it appears here! Christmas Day - and every day - will be brighter, cheerier, merrier with this gay little fellow grinning from the wall! Send for him, or any of the six pictures, now. Package-tops from Kellogg's Rice Krispies are easy and pleasant to get! For this is one of the most enjoyable cereals you ever tasted. It's grains of real rice... flavored to their very cores by a secret Kellogg method... toasted

till they turn so fluffy, golden, and crunchy that they crackle in milk or cream! Your grocer sells Kellogg's Rice Krispies. Order your packages from him today! Out Front Credits include: *Kinky Boots*, *Xanadu*, *La Cage Aux Folles*. Love to her family, Nick, and the beans.

BRADY BROWN *He/Him* (Sound Designer) is back at the sound board for another Out Front production! He is the creator and director of *Judy's 100th Birthday Celebration Cabaret* at Out Front Theatre Company and *Holigays* as a part of 7 Stages' *Curious Holiday Encounters*. Other Sound Design credits include: *Homos, or Everyone in America* (Out Front) and *Sweat* (Georgia State University). He also serves as the Director of Marketing & Communications on staff at Out Front. Thanks to Mom for all the support and to Willa for the constant Facetime sessions. "Give the people what they want and then go have a hamburger." - Judy Garland

ZACH TELLEZ *He/They* (Dramaturg) is so excited to working with Out Front Theatre Company. Zach has also worked at the Atlanta Lyric: *Wizard of Oz*. Kennesaw State University: *She Kills Monsters*, *Young Love*, *Everybody*, *Thumbelina*, *Polaroid Stories*. Many thanks to Tom Fish, his mom. If you want to more of Zach follow him on insta @burgundandy

TORI MORGAN *They/Them* (Costume Assistant) is so excited to be back in the costume saddle for this show and had so much fun working on this production! Previous Out Front credits include: Costume Assistant for *Xanadu* and *Kinky Boots*. Previous Atlanta credits include: *She Kills Monsters* (Atlanta City Theatre). They are a GSU student in their senior year majoring in Theatre Performance and are planning to go into costuming after they graduate. Thanks and love to their friends and family for always supporting them!

OUT FRONT
THEATRE COMPANY

Red

WORLD PREMIERE!

A Crayon's Musical

Based on Michael Hall's 'Red: A Crayon Story'
Book by Ben Thorpe
Music and Lyrics by John Burke

JAN 13 & 14

Mommie Dearest

and the Legacy of Joan Crawford

In many ways, *Christmas Dearest* is just a silly little play, about a ridiculous, aging, alcoholic icon of the silver screen as she learns lessons in generosity and other boring things. *Christmas Dearest* by David Cerda is an ode to camp classics and the essence of queer storytelling, high stakes, hijinks, and high humor. I invite you into the age-old tradition of camp, and the efforts of playwrights like Cerda to keep it alive. I want to give you a window into understanding the necessity of Diva worship and the gay experience, and how for queer youth it instills a sense of hope that is otherwise denied to them.

David Cerda, the author of *Christmas Dearest* is a Chicago based performer and playwright, known and highly regarded for his high-camp, highly theatrical and extremely infamous works. David Cerda himself when talking about his plays states:

"I write plays. Campy, silly, and ridiculous plays that range from satire to parody of films that I love to current events." - David Cerda, Voyage Chicago

Mommie Dearest began as a book, published in 1978, written by the adopted daughter of actress Joan Crawford, Christina Crawford. Christina Crawford intended the book to expose her mother Joan and her abusive practices towards her children and household staff. The book, while scandalous, was viewed with much scrutiny as nothing more than a shallow attempt at ruining the legacy of the deceased Joan Crawford. Many cited that other family members and households all regarded the work as fiction. Secondly, with Joan's death in 1977, Christina and her brother Christopher were disinherited.



Dramaturgy *(continued)*

The film adaptation of *Mommie Dearest* premiered September 16th, 1981, starring Faye Dunaway as the abusive, alcoholic Joan Crawford. With direction by Frank Parry, the film walked a tightrope between biopic and psychological thriller based on a biography, with it largely being a psychological thriller. The film was a failure, with the most optimistic critics saying it was "unintentionally funny" and the sharpest arguing it was the worst movie ever made. The film was nominated for seven Razzies at the Second Annual Golden Raspberry Award, winning five, including the Worst Picture.

This was much to the dismay of Christina Crawford, whose alleged trauma was made the butt of the joke. Nonetheless, despite the poor reception the film initially received, it has gained classic cult status. Contemporary viewers interact in a similar way to audiences interacting with the *Rocky Horror Picture Show!* Guardian staff writer Guy Lodge writes that during the titular wire hangers moment, audiences were hanging off the edge of their seats with anticipation!

While some still regard it as a staple in camp media, other viewers find the "comedy" alarming, and that the film itself is verging more on horror than "hilarity". The film has always been a piece inciting debate and has in many ways overshadowed the legacy of Joan Crawford herself.

In the work of Cerda, we see this deep appreciation of the "aggressively feminine." In *Christmas Dearest*, yes, in one breath Cerda is saying she was a selfish woman who abused her peers; in another breath, that is absolutely why he adores her.

-Dramaturg, Zach Tellez





Pop Culture T-Shirts and so much more...

www.hottea.co



CONNECT WITH US!
#outfronttheatre

Facebook: Out Front Theatre Company
Twitter: @outfronttheatre
Instagram: @outfronttheatre
Snapchat: outfronttheatre
Venmo: @outfronttheatre
#OutFrontChristmasDearest



WHO WE ARE

Out Front Theatre Company was established to tell stories of the LGBTQIA+ (Lesbian, Gay, Bisexual, Transgender, Queer, Intergender, Asexual) experience and community, giving voice to LGBTQIA+ authors, composers, artists, and creators through the medium of theatre and the performing arts. Out Front plans to develop new works and produce classic pieces of theatre that have communicated these stories of the LGBTQIA+ population to a wider audience over time.

As a non-profit organization with a dedicated focus to better the LGBTQIA+ population, we strive to:

- **Produce** established works and premiere productions created by members of the LGBTQIA+ society,
- **Generate** productions with universal themes which are important to the LGBTQIA+ community,
- **Educate** the populous to LGBTQIA+ history,
- **Work** with local and national LGBTQIA+ organizations to bring awareness of issues facing the LGBTQIA+ to the greater Atlanta area,
- **Create** artistic and educational opportunities for at-risk LGBTQIA+ youths by collaborating with local educational institutions and organizations,
- **Expand** the number of theatrical opportunities for artists who are members of or who support the LGBTQIA+ community.

Out Front hopes to create a narrative that will reach beyond the stage, into the

conversations and minds our audiences and artists. Theatre's power as a catalyst to spur dialogues goes back thousands of years. Out Front lives to continue that grand tradition of bringing the stories of the LGBTQIA+ people into the spotlight.

LGBTQIA+ Definitions

L stands for Lesbian: Term used to describe female identified people attracted romantically, erotically, and/or emotionally to other female identified people.

G stands for Gay: Term used in some cultural settings to represent male identified people who are attracted to other male identified people in a romantic, erotic and/or emotional sense. Also, a term used to refer to the LGBTQIA+ community as a whole or as an individual identity label for anyone who does not identify as heterosexual.

B stands for Bisexual: A person emotionally, physically, and/or sexually attracted to people of more than one sex and/or gender. This attraction does not have to be equally split between genders and there may be a preference for one gender over others.

T stands for Transgender: A person who lives as a member of a gender other than that expected based on anatomical sex. Sexual orientation varies and is not dependent on gender identity. This term is sometimes used to refer to the gender variant community as a whole.

Q stands for Queer: An umbrella term, which embraces a matrix of sexual preferences, orientations, and habits of the not-exclusively-heterosexual-and-monogamous majority. Queer includes lesbians, gays, bisexuals, transpeople, intersex persons, and many other sexually transgressive explorers. The term is sometimes used as a sexual orientation label instead of 'bisexual' as a way of acknowledging that there are more than two genders to be attracted to, or as a way of stating a non-heterosexual orientation without having to state who they are attracted to.

I stands for Intergender: Intergender people have a gender identity that is in the middle between the binary genders of female and male, and may be a mix of both.

A stands for Asexual: A term describing individuals who do not experience sexual attraction or do not have interest in or desire for sex. Asexuality is different from celibacy, which means abstaining from sex. Asexuality is often viewed as a spectrum – meaning there are varying levels and identities regarding someone's emotional, spiritual and romantic attraction. The best way to refer to the asexual community is to use the umbrella term "ace" or "aces" as in the "ace community," which acknowledges that spectrum.

+ stands for Many Other Identifications including, but not limited to pansexual, genderqueer, polysexual, agender, androsexual, demisexual, and skoliosexual. We strive to be as inclusive as we can and know we can always improve.

Please visit outfronttheatre.com for a more expansive list of identities, sexualities, terms, resources and more

We welcome all humans, regardless of labels, and hope we celebrate and accept everyone regardless of how they identify.



STAFF AND BOARD LIST

Out Front Theatre Company Staff

- Paul Conroy** (*He/Him*) -
Founder & Producing Artistic Director
- Precious West-Allen** (*She/Her*) -
General Manager
- Justin Kalin** (*He/Him*) -
Associate Artistic Director
- Brady Brown** (*He/Him*) - Director
of Marketing & Communications
- Robby Myles** (*He/Him*) -
Box Office & Front of House Manager
- Mandy Mitchell** (*She/Her*) -
Education Director
- Sydney Lee** (*She/Her*) -
Production Manager
- Madison Grant** (*She/Her*) -
Shop Manager
- Anna Dvorak** (*She/Her*) -
Special Events Coordinator

Board of Directors & Officers

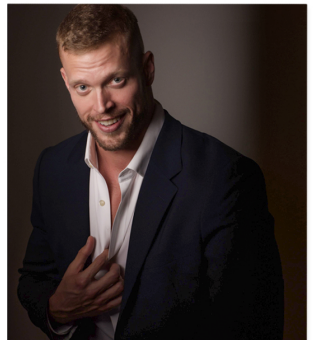
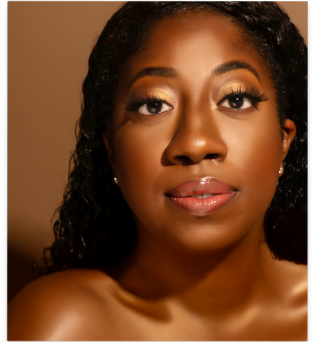
- Clint Clark-Duke** (*He/Him*) - Chairperson
- Jay Reynolds** (*He/Him*) - Treasurer
- Kelly Tonina Cooper** (*She/Her*)
- Secretary
- Sandy Mollett** (*She/Her*)
- Dr. Jesse Peel** (*He/Him*)
- Stephen MacDonald** (*He/Him*)
- Brad Bernstein** (*He/Him*)
- Blake Fountain** (*He/Him*)
- Jason Feldman** (*He/Him*)
- Steven Igarashi-Ball** (*He/Him*)
- Evan Robert Walker** (*He/Him*)



CONGRATULATIONS
ON SEASON 6,
OUT FRONT
THEATRE!



Tyler Ogburn
PHOTOGRAPHY



PRIDE PARTNERS

Out Front Theatre Company's Pride Partners program was established to forge and strengthen bonds with queer-owned and led spaces in the metro Atlanta area and beyond. Below is a list of our current Pride Partners. Continue to support them and their missions as they uplift and celebrate the LGBTQIA+ community!



If you are interested in becoming a Pride Partner, please email our Director of Marketing & Communications, Brady Brown, at brady@outfronttheatre.com.

The Hideaway



It's The Place to Be!

**DAILY DRINK SPECIALS
NO COVER**

MONDAYS
Industry Night

TUESDAYS
Trivia

WEDNESDAYS
Sports Night

THURSDAYS
Karaoke

FRIDAYS & SATURDAYS
House DJs

SUNDAY
T Dances



1544 PIEDMONT AVE NE, ATLANTA, GA 30324
ANSLEY MALL BEHIND PUBLIX



GUAC Y MARGYS TACOS ARE MAGICAL



**ATLANTA'S (GAY-OWNED)
MARGARITA BAR & TAQUERIA**

502 Amsterdam Ave. NE
Atlanta, GA 30306

@guacymargys
GuacyMargys.com

(R)Evolution
by MKAesthetics

104 SYCAMORE PLACE, SUITE A
DECATUR, GA 30030
WWW.REVOLUTIONBYMKA.COM
(404)689-1223

PROVIDING ADVANCED COSMETIC INJECTABLE
TREATMENTS AND AESTHETIC EDUCATION TO DECATUR,
ATLANTA AND BEYOND!!!

services
offered:

- BOTOX
- DERMAL FILLERS
- PDO THREADLIFTS
- HAIR RESTORATION
- DIAMOND GLOW
FACIALS
- RADIOFREQUENCY
MICRONEEDLING

MIKE KELLEHER MMS, PA-C



Beauty (R)elMaged
Beauty (R)eAlized

Donation Listing

Donations made between July 1, 2022 - November 30, 2022.

Out Front Theatre Company is a 501c3 non-profit organization. The health of the company depends on support from patrons just like you! All donations are 100% tax deductible and greatly appreciated! No gift is too small because it truly takes a community to make the arts thrive and grow.

We wouldn't be here without the support of the friends listed below and we would LOVE to add your name to our list of supporters! Donation information is available at the box office or at outfronttheatre.com.

THANK YOU FOR BEING A

friend



DOROTHY
(\$5,000+)

Anonymous

Dr. Hal Brody & Mr. Donald Smith
Dr. Jesse Peel
Jay Reynolds & Michael Barnett



SOPHIA
(\$500 - \$999)

David Starr

David Wilson and Jacob Bush
Joseph Davidson
Kirstin Popper
Thurman Williams
Victoria Bunce
Wade Jones



ROSE
(\$2,500 -
\$4,999)

Anonymous



MILES
(\$100 - \$499)

Bill and Michael Cyr-Royal

Bill Com
Boyd Beckwith
Bruce Garner
Christopher Harris
Christopher Russel
Clint Clark-Duke
Courtney Bowen
David Gacko
David Prohitt
Deanna Dennis
Diane Haymes
Diane Versaggi
Don Deyo
Ed Welsh



BLANCHE
(\$1,000 -
\$2,499)

Casey Brown
Chris Cooper
Courtney Lee
Josh Pitre
Kevin & Rebecca McInturff
Rob Dean
Troy Meyers and Benji Dove

Edwin Page
Eric Wright
Evan Walker
Fruit Wine Productions
Gusto! on Ponce
James Dustin
Jennifer Dorrell
Joseph Austin
Joseph Woodruff
Judy Kimball
Katherine Williams
Lee Osorio
Mark Wohlin
Marykay Mentzer
McCree O'Kelley
Melissa Miller
Michael Schleifer
Precious West-Allen
Richard Vitaris
Stacey Hill
Stephanie Cone
Tim Stoltenberg
Tom Sands
William Dickinson



STAN
(\$1 - \$99)

Alqurin Wright
Anastasia Cheplyansky

Anna Hiott
Ashley Sedmak
Austin Kunis
Carmen Juggassar
Chad Janowiak
Danielle Quesenberry
Deandra West
Drew Fillingier
Edward Gaulrapp
Elizabeth Hirsch-Tauber
Elizabeth Puckerin
Ella Welke
Ellie Clark
Eric Griffis
George Sudberry

Hannah Craton
Harold Horwitz
Hayley Lovitt
Inez Joiner
Jason Beagle
Jason Reeves
Jim Huiner
Kath Fidler
Lakisha Bouchereau
Leonard Pallats
Lucas Wvans
Mandy Dobbins
Marie Blome
Maxine Sims
Michael Shutt
Nicole Grzymala
Patrick Hill
Paul Fulton
Pierre Bush
Randy D Adler
Raymond Barnes
Reginald Slaughter
Reniison Borges
Richard Blackburn
Rick Alexander
Robin Swett Newberg
Sara Ayres
Sarah Taphom
Siomara Rodriguez
Stan Pollard
Stephanie Cane
Stephanie Ospina
Tara Sweeney
Taylor Baugh
Timothy Royer
Travis Brookshire
Victor Provencio
Vincent Donroe-Wells
Zachary Tate





SHOP OUR ONLINE STORE!



Get all your Out Front merch
only at OutFrontTheatre.com/shop

- ✓ TShirts
- ✓ Hoodies
- ✓ Crop Tops
- ✓ Leggings
- ✓ And more!





OUR 2022 - 2023 SEASON



I Wanna Fucking Tear You Apart

FEB. 2 – 18, 2023 *By Morgan Gould*

Samantha and Leo are a team—best friends and roommates, fat girl and gay guy against the world—until a new friend upends their cozy co-dependent diet of mutual self-loathing and *Grey's Anatomy* marathons. An ode to the complications of friendship in its many fucked-up forms, with a special nod to a kind of love that sometimes looks a lot like rage.

SOUTHEASTERN PREMIERE!



one in two

MAR 16 – APR 1, 2023 *By Donja R. Love*

Three Black queer men sit in an ethereal waiting room. One is about to be chosen to live the unforgiving story of a man diagnosed with HIV, struggling to be defined by more than his status. Ten years after his own diagnosis, Donja R. Love has written a fearless account of the reality for too many Americans. A deeply personal call to action, *one in two* shines a light on the people behind a statistic and the strength of the community they make up.

GEORGIA PREMIERE!



Ruthless! The Musical!

MAY 4 – 20, 2023 *Book and Lyrics*

by Joel Paley; Music by Marvin Laird

A co-production with Georgia State University

Eight-year-old Tina Denmark knows she was born to play Pippi Longstocking, and she will do **anything** to win the part in her school musical. "Anything" includes murdering the leading lady!

**Tickets and more at:
OutFrontTheatre.com**

INSIGHTFUL

INNOVATIVE

INCLUSIVE