



# I WANNA FUCKING TEAR YOU APART

**SOUTHEASTERN PREMIERE!**

By Morgan Gould • Directed by Melissa Foulger

A co-production with Island City Stage

**FEB. 2-18, 2023**

**#OutFrontTearYouApart**

[www.OutFrontTheatre.com](http://www.OutFrontTheatre.com)

## A Note from Paul



Hello again, friends.

Every play was, at one point, a new work. The shows that we have come to call our “favorites” were once totally unknown beyond the mind and page of the author. And, whether they become household titles or fall into some form of obscurity, every play survives and endures. There is something magical about being one of the very first audiences to experience a play and come into it with no expectations; to simply sit and understand that everything will be new and exciting. That is exactly what this show is; a new experience and one that I hope stays with all of you for a long time.

We, as audience members, enter a relationship with the shows we see. We form opinions and memories, sometimes good and sometimes not, but we can't deny that these shows enter our consciousness and are forever stored somewhere in our selves—like every relationship we are a part of. If there is one thing I can promise you about this show is that you will not soon forget it, and that to me is the most powerful type of theatre; the kind that stays with you and makes you talk and think.

I know that taking a chance on a new show, much like going on a first date, can cause some apprehension but I hope you'll think of us here as a sort of matchmaker between all of you and every production we present. We are always as intentional with what we put on stage as you are with taking your time to come and sit in our seats. That relationship contract we have with every audience member is the most important one we have, and I hope it lasts for years and decades to come.



Until our next “date”,

**Paul Conroy**

Founder & Producing Artistic Director  
Out Front Theatre Company



Presents

# I WANNA FUCKING TEAR YOU APART

## WRITTEN BY

Morgan Gould

## STARRING

Sofia Palmero, Matthew Busch, Megan Zhang  
Posy Leftwich, Isaac Breiding, Ana Belle Cox

## DIRECTOR

Melissa Foulger

### ASSISTANT DIRECTOR

Zach Georgian

### PRODUCTION STAGE MANAGER

Kailey Graziotto

### ASSISTANT STAGE MANAGER

Tori Morgan

**LIGHTING  
DESIGNER**  
David Reingold

**COSTUME  
DESIGNER**  
Eric Griffis & Cast

**SCENIC  
DESIGNER**  
Ardean Landhuis

**SOUND & PROJECTION  
DESIGNER**  
Brady Brown

**PROPS  
DESIGNER**  
Sydney Lee

**DRAMATURG**  
Luke Evans

*I WANNA FUCKING TEAR YOU APART* was originally produced by Studio Theatre, Washington, DC in January 2017 (David Muse, Artistic Director; Meridith Burkus, Managing Director)

*I WANNA FUCKING TEAR YOU APART* received developmental support through the 2016 Beatrice Terry Residency Program of The Drama League of New York, Roger T. Danforth, Artistic Director, Gabriel Shanks, Executive Director

Additional development support was provided by Lark Play Development Center, SPACE on Ryder Farm, and Brooklyn College MFA Playwrights Workshop"

***The videotaping or other video or audio recording of this production is strictly prohibited.***



This program is supported in part by Georgia Council for the Arts through the appropriations of the Georgia General Assembly. Georgia Council for the Arts also receives support from its partner agency - the National Endowment for the Arts. This program is supported in part by the City of Atlanta Mayor's Office of Cultural Affairs. Funding for this program is provided by the Fulton County Board of Commissioners.





# I WANNA FUCKING TEAR YOU APART

**SETTING & TIME:** Present Day, New York City

There will be one 15-minute intermission.

## Cast & Crew

### CAST

Sam ..... Sofia Palmero  
Leo ..... Matthew Busch  
Chloe ..... Megan Zhang  
Understudies ..... Posy Leftwich,  
Isaac Breiding, Ana Belle Cox

Scenic Designer ..... Ardean Landhuis  
Sound & Projection Designer ..... Brady Brown  
Props Designer ..... Sydney Lee  
Dramaturg ..... Luke Evans  
Master Carpenter ..... Matthew Dupee  
Run Crew ..... Micah Beasley  
Lighting Assistants ..... Bryson Prince,  
Eduardo Martinez, Aleah Stephens  
Costume Assistant ..... Shalom Thomas  
Scenic Assistants ..... Georgia Waters  
Props Assistants ..... Charlotte Edwards,  
Clo Cooper  
Photographer ..... Sydney Lee  
Videographer ..... Saturnblu Productions  
Public Relations ..... JMF Communications  
Graphic Designer ..... Brandon D Hunt

### PRODUCTION CREW

Director ..... Melissa Foulger  
Assistant Director ..... Zack Georgian  
Production Stage  
Manager ..... Kailey Graziotto  
Assistant Stage Manager ..... Tori Morgan  
Lighting Designer ..... David Reingold  
Costume Designer ..... Eric Griffis & Cast

### SPECIAL THANKS

Island City Stage, Atlanta City Theatre, 7 Stages, Jeff Allen, Michael Etheridge

*We apologize for anyone who may have been accidentally omitted from this program.*



## Director's Note

*Not every gay man has a female best friend, nor does every straight woman have a gay man as her most trusted confidant. But according to a recent article in *Evolutionary Psychology*, every one should. – Scientific American, 2014*



We all know it well—the gay man and his best girlfriend. This long-standing relationship has existed for decades and has been portrayed on countless TV shows like *Will and Grace*. It has even been the topic of academic research. And now, we present Leo and Sam's relationship to you on stage. Welcome to ***I Wanna Fucking Tear You Apart***.

When I was approached to do this show, the first thing that caught my attention was this relationship. I understood it—hell, I lived it. In high school, I was the fat girl and my best friend, Jason (while not yet out) was my best gay friend. We clicked. I knew that I loved him and he loved me and we would do anything for each other. Over the years, I've had versions of that relationship with several different men. Each one was my platonic, emotional support partner while I tried to figure myself out, build up my self-esteem, and find a romantic partner who could provide that same commitment to me. And finally, I did. If I hadn't had these specific and special relationships, I wouldn't have grown into the partner that I am today.

*Evolutionary Psychology* describes it like this:

*Despite being sexually attracted to the same gender (i.e., men), gay men and straight women are neither potential romantic partners nor mating competition for each other. They are thus uniquely positioned to provide one another with mating-relevant advice and support that is not tainted with ulterior motives borne from intrasexual rivalry or competition.*

But what happens when that relationship sours—when jealousy and anger seep in. What happens when this platonic relationship becomes more like a romantic relationship and falls apart? Leo and Sam look like the perfect relationship, but it is fragile, it is dysfunctional, just as their egos are. Because of that, we end up on an emotional roller coaster that is ***I Wanna Fucking Tear You Apart***. Enjoy that ride!

### **Melissa Foulger**

Director, *I Wanna Fucking Tear You Apart*

# COMMITMENTS & VALUES

## MISSION

Out Front Theatre Company's mission is to tell LGBTQIA+ (Lesbian, Gay, Bisexual, Transgender, Queer, Questioning, Intergender, Asexual) stories.

## VISION

Out Front Theatre Company's vision is to strengthen the LGBTQIA+ community in Georgia by exploring and celebrating the universal human experience through the lens of gender and sexuality.

## EQUALITY, DIVERSITY, & INCLUSION COMMITMENT

The staff and board of Out Front Theatre Company want to put the following metrics in place so that we can track them to completion. We want our stakeholders and our patrons to see real results.

- We want to have representative board members from black and brown communities, as well as gender nonconforming representatives and increase that representation by at least 10% every year until we reach a goal of above 50%.
- We want to produce, support, or promote at least 2 shows/events from creatives of color every year and increase that number by at least 20% every year.
- We want to increase our presence in communities of color and in women's communities through intentional outreach. We can do this by creating a communication strategy to expand our patronage. To that end, we will recruit a community outreach intern or staff member to help achieve this goal.
- We want to increase our intersectional involvement by partnering with other socially progressive nonprofit organizations to collaborate on community events. The goal is to have at least one partner event per year with an ultimate goal of three per year.

Please visit  
[www.OutFrontTheatre.com](http://www.OutFrontTheatre.com)  
to learn more.



## LAND ACKNOWLEDGMENT

We are gathered on the unceded land of the Mvskoke (Muscogee/Creek) peoples. We ask you to join us in acknowledging the Mvskoke community, their elders both past and present, as well as future generations. Out Front Theatre Company also acknowledges that it was founded upon exclusions and erasures of many Indigenous peoples, including those on whose land this institution is located.

This acknowledgment demonstrates a commitment to beginning the process of working to dismantle the ongoing legacies of settler colonialism.



**THE MUSCOGEE NATION**

**For more information on this nation,  
as well as how to support to them,  
please visit [www.muscogeenation.com](http://www.muscogeenation.com)**





GEORGIA PREMIERE!

# oneintwo



By Donja R. Love • Directed by J.L. Reed

Three Black queer men sit in an ethereal waiting room. One is about to be chosen to live the unforgiving story of a man diagnosed with HIV, struggling to be defined by more than his status. Ten years after his own diagnosis, Donja R. Love has written a fearless account of the reality for too many Americans. A deeply personal call to action, *one in two* shines a light on the people behind a statistic and the strength of the community they make up.

**MAR 16-APR 1, 2023**

Tickets: \$15 and up  
Out Front Theatre Company  
999 Brady Avenue, Atlanta



[www.OutFrontTheatre.com](http://www.OutFrontTheatre.com)

# CAST & CREW BIOS

## CAST

**SOFÍA PALMERO** *They/She* (Sam) is thrilled to be back on Out Front's stage for their first live performance since 2020. Previous Out Front credits include: *The Santa Closet*, *Standing on Ceremony*, and *Bull in a China Shop*. Previous Atlanta credits: *Fuddy Meers* (Essence to Crux), *Spirits to Enforce* (Vernal & Sere), and *Henry IV & V* (Shakespeare on Draft). You may also catch a glimpse of them in Blumhouse's queer horror film *They/Them* on Peacock. They would like to thank the entire team at Out Front for trusting them with this wild role, Morgan Gould for writing such a magnificently crazy fat bitch, and their partner Zyon for keeping them fed.

**MATTHEW BUSCH** *He/Him* (Leo) is delighted to return to Out Front! Out Front Theatre credits: Director of *The Rocky Horror Show*. Select Atlanta credits: *The Flower Room*, *The Thrush & The Woodpecker*, *Equus*, *Kiss of the Spiderwoman* (Actor's Express), *Exit Strategy* (Kenny Leon's True Colors Theatre), *Entertaining Lesbians*, *Tokens of Affection*, *The Credeaux Canvas*, *Other Desert Cities*, *The House of Yes* (Out of Box Theatre), among others. Thank you to the cast, crew, and company for their vision and trust. For Alex. @itsmatbusch on socials. www.MatthewRBusch.com

**MEGAN ZHANG** *She/Her* (Chloe) Out Front Theatre: Debut. Previous Atlanta credits: *The Madhatter Pillar and Her Many Heads* (Synchronicity Theatre), *A Christmas Carol* (Atlanta Shakespeare Company), *Lizzie* (Actors Express), *Pretty Pants Bandit* (Georgia Ensemble Theatre).

**POSY LEFTWICH** *She/Her* (Sam u/s) is baaaaack! Previous Out Front Theatre credits: *Kinky Boots*, *Christmas Dearest*. Previous Atlanta credits include: Leah in *Call Number* (Horizon Theatre Company's NSYPF) and Vera in *She Kills Monsters* (Georgia State University). Big shoutout to comfy sneakers, reliable wi-fi, and the \$10 humidifier from Aldi for getting her through January.

**ISAAC BREIDING** *He/Him* (Leo u/s): Previous Out Front credits: *Christmas Dearest*. Other Credits: Tin-Man in *The Wiz* (Alexander High School), Mr. Mushnik in *Little Shop of Horrors* (Carrollton Center for the Arts), Pinocchio in *Shrek the Musical* (Alexander High School), and Theo in *School of Rock* (Carrollton Center for the Arts). You can follow Isaac on Instagram @isaac.breiding

**ANA BELLE COX** *She/Her* (Chloe u/s) is thrilled to be working on her first production with Out Front. Out Front Theatre: Debut. Past Atlanta Credits: Jessie in *SWEAT* (Atlanta City Theatre), Helga in *Cabaret* (Henry Players), Dance Ensemble/US Maureen in *RENT* (Henry Players), Lilith Morningstar in *She Kills Monsters* (Atlanta City Theatre). She will be returning to Out Front as US Tina Denmark in *RUTHLESS!* Follow her on Instagram! (@ana.b.cox)

## PRODUCTION CREW

**MELISSA FOULGER** *She/Her* (Director) is excited to be working at Out Front for the first time! Ms. Foulger is the Artistic Director of DramaTech Theatre, Georgia Tech's student run theatre, and an instructor in the School of Literature, Media and Communications. Atlanta: Horizon Theatre: *Nomad Motel*, *The Truth About God and Sex*. Actor's Express:

## CAST & CREW BIOS (CONTINUED)

*Reykjavik, The Flower Room, Les Liaisons Dangereuses, The Thrush and the Woodpecker, Pluto* (Suzi Bass Award - Outstanding Ensemble in a Play), *Wolves* (Suzi Bass Award - Outstanding World Premiere Production), *See What I Wanna See* (Suzi Award - Outstanding Ensemble in the Musical), *Good Boys and True, Suddenly Last Summer*. Aurora Theatre: *Maytag Virgin, Clybourne Park, Lark Eden*. Dad's Garage: *The Weird*. Theatrical Outfit: *Boy, Bright Half Life*. 7 Stages: *My Left Breast, Wizzer Pizzer, Far Away, Iphigenia (a rave fable)*. More at [www.melissafoulger.com](http://www.melissafoulger.com). LUV2N8

**ZACK GEORGIAN** *He/Him* (Assistant Director): Zack is over the moon to have to opportunity to make his Out Front Theatre debut and his professional assistant directing debut! Previous AD and directing credits include *Jump* (Actors Express); *An Octoroon* (Actors Express); *Doll's House Part Two* (Actors Express); *Almost, Maine* (Salem State University). He'd like to thank Paul and Melissa for the amazing opportunity and the cast and crew for such a fun experience. Enjoy!

**KAILEY GRAZIOTTO** *She/Her* (Production Stage Manager) is thrilled to return to Out Front! Past Out Front Credits: Assistant Stage Manager for *Kinky Boots*. Other Atlanta Credits: Stage Manager for *'Twas The Night Before Christmas* (Stage Door Theatre), Stage Manager for *Tapas: The Bronze* (The Academy Theatre). Kailey recently graduated from Emory University with a B.A. in English and Creative Writing and Theater Studies-her favorite student theater credits include: Stage Manager of *The Last Five Years* (Theater at Emory), Technical Director for *Fun Home* (Ad Hoc Productions), Stage Manager of *Eurydice*

(Dooley's Players). Big thanks to her endlessly supportive family and friends!

**TORI MORGAN**; *They/Them* (Assistant Stage Manager) is excited to be working with Out Front again! Previous Out Front credits include Costume Assistant for *Xanadu, Kinky Boots, and Christmas Dearest*. Previous Atlanta credits: *She Kills Monsters* (Atlanta City Theatre). They are in their senior year at GSU studying theatre and will hopefully be graduating this semester. Many thanks to their family and friends for their support and love!

**DAVID REINGOLD** *He/Him* (Lighting Designer) is stoked to be back at Out Front with you! Out Front Theatre: *Kinky Boots, Boys in the Buff*. Previous Atlanta credits: Lighting Designer for *Into the Woods, And Then There Were None* (Act3 Productions); *Sweet Charity* (Reinhardt University), and *The Legend of Georgia McBride* (Georgia College). Projections Designer for *She Persisted, and Dragons Love Tacos* (Georgia Ensemble Theatre). Up next David will be designing lights for *Women in Jeopardy* at Georgia Ensemble Theatre. A recent graduate of Penn State University with a BFA in Lighting Design, David is very glad to be back home and working in Atlanta. Many thanks to Paul, Melissa, Kailey, and the entire Out Front team for such a great process and for making queer theatre happen. [davidreingold.net](http://davidreingold.net).

**ERIC GRIFFIS** *He/They* (Costume Designer) is the Professor of Costume Design and Chair for the Department of Theatre and Dance at Georgia College. Previous designs at Out Front include *Homos: Or Everyone in America, Golden Girls: The Lost Episodes, warplay,*



## CAST & CREW BIOS (CONTINUED)

*Christmas with the Crawfords, I Am My Own Wife, and Porcelain.* Other designs include *The Marriage Counselor* and *The Last Five Years* for Birdhouse Theatre, and *Ride the Cyclone, The Revolutionists, Heathers, Crowns, and Cabaret* for Georgia College. Visit [ericgriffis.com](http://ericgriffis.com) to see more of his work.

**ARDEAN LANDHUIS** *He/Him* (Scenic Designer) makes his Out Front Theatre debut with IWFTYA. Regional scenic and lighting credits include productions of *Evita, Phantom, Mame, A Little Night Music* and *Anything Goes*. Opera designs include productions of *LA BOHEME, TOSCA, AMAHL AND THE NIGHT VISITORS, LA TRAVIATA* and the American Opera *NOT IN MY TOWN* (World Premiere). Industrial credits include Cirque Du Soleil's *La Nouba* and various venues at Universal Studios City Walk. He also works as an Opera Singer and Stage Director.

**BRADY BROWN** *He/Him* (Sound & Projection Designer) is an actor, director, writer, and sound designer based in Atlanta, GA. He is the creator and director of *Judy's 100th Birthday Celebration Cabaret* at Out Front Theatre Company and *Holigays* as a part of 7 Stages' Curious Holiday Encounters. Recent credits include: *Christmas Dearest, Homos, or Everyone in America, and Sweat*. He also serves as the Director of Marketing & Communications on staff at Out Front. Thanks to Mom for all the support and to Willa for the constant Facetime sessions. "Give the people what they want and then go have a hamburger." - Judy Garland

**SYDNEY LEE** *She/Her* (Props Designer) is the current Production Manager of

Out Front Theatre Company. She works as a multifaceted theatre artist and photographer in the Atlanta area. Past Out Front credits include: *Kinky Boots, Xanadu, Paul and Brian's Wedding, La Cage Aux Folles* (Stage Manager), *Christmas With The Crawfords* (Props Designer), *Christmas Dearest* (Co-Set/Prop Designer). Past Production Management credits include 2022 Shuler Hensley Awards and *Mother of God*. Stage Management credits include *A Christmas Carol* and *Unbossed & Unbowed* (Aurora Theatre), *Ebenezer: A Reconstruction Concert* (Atlanta Musical Theatre Festival), *Songs for a New World* (BUICentennial Productions), *Love's Labour's Lost, A New Brain* (Zero Circle Theatre Company). When she isn't working, she enjoys building Lego, playing video games, and eating Private Selections Black Raspberry Dark Chocolate Chunk ice cream. Much love to her family, Nick, Appa, Momo, Kraken, and Goblin. Instagram: [@sydneywithacamera](https://www.instagram.com/sydneywithacamera)

**LUKE EVANS** *He/Him* (Dramaturg) is a Georgia-based dramaturg, playwright, and theatre critic. He previously served as a dramaturg for Out Front Theatre's production of *Kinky Boots* and is excited to be joining them again for *I Wanna Fucking Tear You Apart*. Luke earned his undergraduate degree from Oglethorpe University before earning his master's degree in Theatre Studies from the University of Houston. Currently, he is also the New Play Development Apprentice at Working Title Playwrights and he also writes freelance reviews for Arts ATL, Broadway World - Atlanta, and the AJC. His work focuses on representation for queer and neurodivergent communities.

# Team Fat/Gay: A Case Study in Codependence

“Codependence” is a term that has generated much disagreement among psychologists. What exactly does it mean? How do we go about treating it? Should it be considered an actual diagnosis? Most importantly, how do we recognize it when it’s become so overused that it threatens to lose all meaning? The debate is likely to continue on for years to come, but there is one thing that we can say with certainty in the here and now: codependence, when examined through a narrative lens, can be as fascinating as it is unhealthy.

But what exactly does “codependence” entail? Let’s see what the experts have to say about it, shall we?

*“A codependent person is one who has let another person’s behaviour affect him or her, and who is obsessed with controlling that person’s behaviour.” – Melody Beattie*

*“A codependent is a person who can’t function from his or her innate self and instead organizes thinking and behavior around a substance, process, or other person(s).” – Darlene Lancer*

*“A relational pattern in which a person attempts to derive a sense of purpose through relationships with others.” – United States National Library of Medicine*

While the exact definitions differ, there is a consensus that codependence involves being unable to maintain a sense of identity without the presence of another person. Obviously, such a dynamic would be largely unsustainable, though people try nonetheless, with often destructive results. Yet, for how detrimental codependence can be, it is often rooted in a simple desire to connect. That connection can often make it difficult for us to recognize the toxicity in codependent relationships.

The tricky thing about codependent relationships is that they typically begin more beneficially. There is a reason we glom onto someone so hard that their identity becomes inseparable from our own: because they give us something we need. They provide a sense of stability, safety, and validation that we may

## Dramaturgy

have lacked during our developmental years. This kind of emotional security can be essential in helping us grow into fully formed adults.

In a healthy relationship, however, we eventually grow past the need to have each other around all the time. But when that initial symbiosis becomes twisted, when we use each other to numb old wounds instead of healing them, that is where codependence is born. To put it simply, if this person is the only thing that makes you feel okay about yourself, then in order for you to continue to feel okay, they have to stay the same. They cannot leave and they most certainly cannot change. Because what if they change into the kind of person who can no longer be used as Neosporin for your perpetually bruised ego?

Thus, we enter the realm of jealousy, anger, and resentment. One person's attempt at growth is viewed as abandonment. The other person's attempts at closeness are viewed as manipulation. What was mutually sustaining becomes self-destructive. We may resent ourselves for needing the other person so much. We may want to pull away, but the thing that is suffocating us is also the thing we see as keeping us afloat. What can you do other than self-destruct?

***I Wanna Fucking Tear You Apart*** brings us in right as this tipping point, as a 15 year old friendship that has always flirted with codependence is beginning to reach critical mass. Playwright Morgan Gould peels back the layers of sarcasm and self-deprecating wit that surround Leo and Sam's relationship to reveal the dysfunction at its core. The resulting spiral begs the question: what do we do when we love the person we also want to fucking tear apart?

– Luke Evans, Dramaturg







**HOT  
TEA**.co

Pop Culture T-Shirts and so much more...

[www.hottea.co](http://www.hottea.co)



**CONNECT WITH US!**  
**#outfronttheatre**

Facebook: Out Front Theatre Company

Twitter: @outfronttheatre

Instagram: @outfronttheatre

Snapchat: outfronttheatre

Venmo: @outfronttheatre

**#OutFrontTearYouApart**



# WHO WE ARE

Out Front Theatre Company was established to tell stories of the LGBTQIA+ (Lesbian, Gay, Bisexual, Transgender, Queer, Intergender, Asexual) experience and community, giving voice to LGBTQIA+ authors, composers, artists, and creators through the medium of theatre and the performing arts. Out Front plans to develop new works and produce classic pieces of theatre that have communicated these stories of the LGBTQIA+ population to a wider audience over time.

As a non-profit organization with a dedicated focus to better the LGBTQIA+ population, we strive to:

- **Produce** established works and premiere productions created by members of the LGBTQIA+ society,
- **Generate** productions with universal themes which are important to the LGBTQIA+ community,
- **Educate** the populous to LGBTQIA+ history,
- **Work** with local and national LGBTQIA+ organizations to bring awareness of issues facing the LGBTQIA+ to the greater Atlanta area,
- **Create** artistic and educational opportunities for at-risk LGBTQIA+ youths by collaborating with local educational institutions and organizations,
- **Expand** the number of theatrical opportunities for artists who are members of or who support the LGBTQIA+ community.

Out Front hopes to create a narrative that will reach beyond the stage, into the

conversations and minds our audiences and artists. Theatre's power as a catalyst to spur dialogues goes back thousands of years. Out Front lives to continue that grand tradition of bringing the stories of the LGBTQIA+ people into the spotlight.

## LGBTQIA+ Definitions

**L stands for Lesbian:** Term used to describe female identified people attracted romantically, erotically, and/or emotionally to other female identified people.

**G stands for Gay:** Term used in some cultural settings to represent male identified people who are attracted to other male identified people in a romantic, erotic and/or emotional sense. Also, a term used to refer to the LGBTQIA+ community as a whole or as an individual identity label for anyone who does not identify as heterosexual.

**B stands for Bisexual:** A person emotionally, physically, and/or sexually attracted to people of more than one sex and/or gender. This attraction does not have to be equally split between genders and there may be a preference for one gender over others.

**T stands for Transgender:** A person who lives as a member of a gender other than that expected based on anatomical sex. Sexual orientation varies and is not dependent on gender identity. This term is sometimes used to refer to the gender variant community as a whole.



**Q stands for Queer:** An umbrella term, which embraces a matrix of sexual preferences, orientations, and habits of the not-exclusively-heterosexual-and-monogamous majority. Queer includes lesbians, gays, bisexuals, transpeople, intersex persons, and many other sexually transgressive explorers. The term is sometimes used as a sexual orientation label instead of 'bisexual' as a way of acknowledging that there are more than two genders to be attracted to, or as a way of stating a non-heterosexual orientation without having to state who they are attracted to.

**I stands for Intergender:** Intergender people have a gender identity that is in the middle between the binary genders of female and male, and may be a mix of both.

**A stands for Asexual:** A term describing individuals who do not experience sexual attraction or do not have interest in or desire for sex. Asexuality is different from celibacy, which means abstaining from sex. Asexuality is often viewed as a spectrum – meaning there are varying levels and identities regarding someone's emotional, spiritual and romantic attraction. The best way to refer to the asexual community is to use the umbrella term "ace" or "aces" as in the "ace community," which acknowledges that spectrum.

**+ stands for Many Other Identifications** including, but not limited to pansexual, genderqueer, polysexual, agender, androsexual, demisexual, and skoliosexual. We strive to be as inclusive as we can and know we can always improve.

**Please visit [outfronttheatre.com](http://outfronttheatre.com) for a more expansive list of identities, sexualities, terms, resources and more**

*We welcome all humans, regardless of labels, and hope we celebrate and accept everyone regardless of how they identify.*



## STAFF AND BOARD LIST

### Out Front Theatre Company Staff

- Paul Conroy** (*He/Him*) -  
Founder & Producing Artistic Director
- Precious West-Allen** (*She/Her*) -  
General Manager
- Justin Kalin** (*He/Him*) -  
Associate Artistic Director
- Brady Brown** (*He/Him*) - Director  
of Marketing & Communications
- Robby Myles** (*He/Him*) -  
Box Office Manager
- Mandy Mitchell** (*She/Her*) -  
Education Director
- Sydney Lee** (*She/Her*) -  
Production Manager
- Madison Grant** (*She/Her*) -  
Shop Manager
- Anna Dvorak** (*She/Her*) -  
Special Events Coordinator

### Board of Directors & Officers

- Clint Clark-Duke** (*He/Him*) - Chairperson
- Blake Fountain** (*He/Him*)  
- Vice Chairperson
- Jay Reynolds** (*He/Him*) - Treasurer
- Kelly Tonina Cooper** (*She/Her*)  
- Secretary
- Sandy Mollett** (*She/Her*)
- Dr. Jesse Peel** (*He/Him*)
- Stephen MacDonald** (*He/Him*)
- Brad Bernstein** (*He/Him*)
- Jason Feldman** (*He/Him*)
- Steven Igarashi-Ball** (*He/Him*)
- Evan Robert Brown Walker** (*He/Him*)

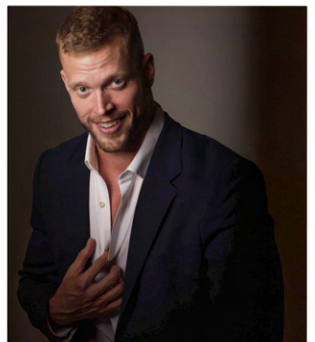




CONGRATULATIONS  
ON SEASON 6,  
OUT FRONT  
THEATRE!



*Tyler Ogburn*  
PHOTOGRAPHY



# Donation Listing

Donations made between July 1, 2022 - January 25, 2023..

Out Front Theatre Company is a 501c3 non-profit organization. The health of the company depends on support from patrons just like you! All donations are 100% tax deductible and greatly appreciated! No gift is too small because it truly takes a community to make the arts thrive and grow.

We wouldn't be here without the support of the friends listed below and we would LOVE to add your name to our list of supporters! Donation information is available at the box office or at [outfronttheatre.com](http://outfronttheatre.com).

## THANK YOU FOR BEING A

*friend*



**DOROTHY**  
(\$5,000+)

Anonymous  
Courtney Lee

Dr. Hal Brody & Mr. Donald Smith  
Dr. Jesse Peel  
Jay Reynolds & Michael Barnett



**ROSE**  
(\$2,500 - \$4,999)

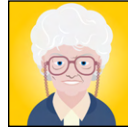
Anonymous



**BLANCHE**  
(\$1,000 - \$2,499)

Billy Chiou  
Casey Brown

Chris Cooper  
Josh Pitre  
Keith Whitson  
Kevin & Rebecca McInturff  
Rob Dean  
Troy Meyers and Benji Dove



**SOPHIA**  
(\$500 - \$999)

Brandon and Scott Hunt  
Craig Hardesty

David Starr  
David Wilson and Jacob Bush  
Joseph Davidson  
Keely Herrick  
Kirstin Popper  
Lisa Boyd  
Thurman Williams  
Victoria Bunce  
Wade Jones  
Whitney Johnson



**MILES**  
(\$100 - \$499)

Bill and Michael Cyr-Royal  
Bill Com

Blake Smith  
Boyd Beckwith  
Bruce Garner  
Christopher Harris  
Christopher Russel  
Clint Clark-Duke  
Courtney Bowen  
David Gacko  
David Prophitt  
Deanna Dennis  
Diane Haymes  
Diane Versaggi  
Don Deyo  
Ed Welsh

Edwin Page  
Eric Wright  
Evan Walker  
Fruit Wine Productions  
Gusto! on Ponce  
James Dustin  
Jennifer Dorrell  
Joseph Austin  
Joseph Woodruff  
Judy Kimball  
Katherine Williams  
Katie Smith  
Lee Osorio  
Mark Wohlin  
Marykay Mentzer  
McCree O'Kelley  
Melissa Miller  
Michael Schleifer  
Precious West-Allen  
Richard Vitaris  
Ritchie Crownfield  
Stacey Hill  
Stephanie Cone  
Tim Stoltenberg  
Tom Sands  
William Dickinson  
William Paris



**STAN**  
**(\$1 - \$99)**

Alqurin Wright  
Akini Morris

Anastasia Cheplyansky  
Andrea Barra  
Anna Hiott  
Ashley Sedmak  
Austin Kunis  
Beate Czogalla  
Carmen Juggassar  
Chad Janowiak  
Danielle Quesenberry  
Deandra West  
Drew Fillinger  
Edward Gaulrapp  
Elizabeth Hirsch-Tauber

Elizabeth Puckerin  
Ella Welke  
Ellie Clark  
Eric Griffis  
George Sudberry  
Hannah Craton  
Harold Horwitz  
Hayley Lovitt  
Inez Joiner  
Jason Beagle  
Jason Reeves  
Jim Huiner  
Kath Fidler  
Lakisha Bouchereau  
Leonard Pallats  
Lucas Wvans  
Mandy Dobbins  
Marie Blome  
Maxine Sims  
Michael Shutt  
Nicole Grzymala  
Patrick Hill  
Paul Fulton  
Pierre Bush  
Randy D Adler  
Raymond Barnes  
Reginald Slaughter  
Reniison Borges  
Richard Blackburn  
Rick Alexander  
Rob Borders  
Robin Swett Newberg  
Sara Ayres  
Sarah Taphom  
Siomara Rodriguez  
Sisney Hollwager  
Stan Pollard  
Stephanie Cane  
Stephanie Ospina  
Tara Sweeney  
Taylor Baugh  
Timothy Royer  
Tom Slovak  
Travis Brookshire  
Victor Provencio  
Vincent Donroe-Wells  
Zachary Tate







## Dr. Farah Kar DDS, MS, MSc

Double Board-Certified Orthodontist

GET YOUR  
COMPLIMENTARY CONSULTATION

Please text to schedule: (859) 538-6135

1111 Johnson Ferry Rd.  
Marietta, GA 30062



**WILLOW**  
ORTHODONTICS

Exceptional orthodontic care  
for children and adults!

We are so excited to announce  
that Dr. Kar's clinics will be  
transitioning to a new name!

**Willow Orthodontics**

Blooming this  
Spring/Summer 2023



Follow Dr. Kar  
on Instagram!



The Triangle Cabaret at Out Front Theatre Company will expand and explore art forms and elevate artists with a cornucopia of community events and performances that strengthen Out Front's mission as Georgia's only LGBTQIA+ theatre.

Visit [www.OutFrontTheatre.com/The-Triangle-Cabaret](http://www.OutFrontTheatre.com/The-Triangle-Cabaret) to learn more.



# SHOP OUR ONLINE STORE!



Get all your Out Front merch  
only at [OutFrontTheatre.com/shop](https://www.outfronttheatre.com/shop)

✓ TShirts

✓ Hoodies

✓ Crop Tops

✓ Leggings

✓ And more!





# OUR 2022 - 2023 SEASON



## one in two

**MAR 16 – APR 1, 2023** *By Donja R. Love*  
Three Black queer men sit in an ethereal waiting room. One is about to be chosen to live the unforgiving story of a man diagnosed with HIV, struggling to be defined by more than his status. Ten years after his own diagnosis, Donja R. Love has written a fearless account of the reality for too many Americans. A deeply personal call to action, one in two shines a light on the people behind a statistic and the strength of the community they make up. **GEORGIA PREMIERE!**



## Ruthless! The Musical!

**MAY 4 – 20, 2023** *Book and Lyrics by Joel Paley; Music by Marvin Laird*  
A co-production with Georgia State University  
Eight-year-old Tina Denmark knows she was born to play Pippi Longstocking, and she will do **anything** to win the part in her school musical. "Anything" includes murdering the leading lady!

Tickets and more at:  
**OutFrontTheatre.com**

INSIGHTFUL

INNOVATIVE

INCLUSIVE