



Southeastern Premiere



SNOW GIRLS

The Musical

Book by
Derek Van Barham
Music by **David Cerda**
with **Scott Lamberty**
and **Jeff Thomson**

DEC 7-17, 2023

#OutFrontSnowGirls



REGIONS



Production Sponsors **Jay Reynolds** and **Michael Barnett**

www.OutFrontTheatre.com

A Note from Paul



What makes something a “cult classic?” A quick Google search tells us that “cult films are known for their dedicated, passionate fanbase which forms an elaborate subculture, members of which engage in repeated viewings, dialogue-quoting, and audience participation.” 1995’s *Showgirls* is the definition of a cult classic, and now it wears another prestigious title; a parody musical based on it.

The relationship between the queer community and cult movies is nothing new. *Mommie Dearest*, *The Rocky Horror Show*, *CLUE*, *Troop Beverly Hills*, anything by John Waters – the list goes on and on and is unique for each of us. One thing that many of these movies have in common is a strong female or queer centered character. Maybe there is some deep psychological connection we make with these movies and characters that we aren’t conscious of. Maybe we are trying to fill a void somewhere in our soul. Maybe the movies are actually great and we, as a community, just have better taste.

People ask me all the time “why do you select these shows for Out Front to do at the holidays?” and my answer is always the same; I think it’s important to laugh, and sometimes we need that at the holidays more than any other time of the year. The LGBTQIA+ community is, by definition, not traditional; so why would we present a traditional holiday story for you to see on stage?

SnowGirls takes *Showgirls* and licks it like a candy cane stripper pole, tosses it in a snow globe, and stuffs it in our stocking. I hope the thing it does the most is make you all laugh. I think that’s the best gift we can give to you this time of year.

If you’ve been here for the holidays before, welcome back. If this is your first time, welcome to the Out Front Holiday Cult Classic Club.



Stay Merry, Bright, and Gay!

Paul Conroy

Founder & Producing Artistic Director
Out Front Theatre Company



BOOK BY
DEREK VAN BARHAM

MUSIC BY With SCOTT LAMBERTY
DAVID CERDA and JEFF THOMSON

STARRING

Anna Holland, Bekah Medford, Tyshawn Gooden,
Katie Wickline, Lilly Anayeh, Noah Vega, Jessica Wise,
Allison Martin, Blake Fountain, Kelsey South, Jared Brown,
Karastyn Bibb, Kyle Graves, Logan Reed, Isaac Breiding

DIRECTOR
Paul Conroy

MUSIC DIRECTOR Alli Reinhardt **CHOREOGRAPHER** Courtney Locke **PRODUCTION STAGE MANAGER** Mahala Dawn

LIGHTING DESIGNER Lindsey Sharpless **COSTUME DESIGNER** Eric Griffis **WIG DESIGNER** Cathleen O'Neal

SOUND DESIGNER Mattie Weeks **DRAMATURG** Luke Evans

The videotaping or other video or audio recording of this production is strictly prohibited.



This program is supported in part by Georgia Council for the Arts through the appropriations of the Georgia General Assembly. Georgia Council for the Arts also receives support from its partner agency - the National Endowment for the Arts. This program is supported in part by the City of Atlanta Mayor's Office of Cultural Affairs. Funding for this program is provided by the Fulton County Board of Commissioners.



SETTING: *The North Pole*

There will be one 15-minute intermission.

Cast & Crew

CAST

Snowmi Malone Anna Holland
 Ice Crystal Connors..... Bekah Medford
 Zip Merry..... Tyshawn Gooden
 Jolly Goodfellow.....Katie Wickline
 Yuletide Gay Lilly Anayah
 Yukon/Herbie Noah Vega
 Dasher..... Jessica Wise
 Dancer..... Allison Martin
 Tony Frost/Santa.....Blake Fountain
 Mrs. ClausKelsey South
 Rudolph/The Grinch..... Jared Brown
 Cookie..... Karastyn Bibb
 Naughty..... Kyle Graves
 Nice..... Logan Reed
 Swing.....Isaac Breiding

PRODUCTION CREW

Director Paul Conroy
 Music DirectorAlli Reinhardt
 Choreographer Courtney Locke
 Production Stage Manager.....Mahala Dawn
 Lighting Designer Lindsey Sharpless
 Costume DesignerEric Griffis
 Wig Designer Cathleen O’Neal
 Sound DesignerMattie Weeks
 Dramaturg..... Luke Evans
 Intimacy Director.....Mandy Michell
 Set Construction LeadZack Georgian
 Assistant Director..... Grace Davenport
 Assistant Stage Managers..... Nailah Dabon
 & Maekaylia Jackson
 Scenic Artists Madison Grant
 & Sydney Lee
 Photographer Sydney Lee
 VideographerSaturnblu Productions
 Public Relations JMF Communications
 Graphic Designer.....Brandon D Hunt

We apologize for anyone who may have been accidentally omitted from this program.



ACT ONE

"Opening"	Company
"Hitchin'"	Snowmi and Yukon
"They Call Me Ice Crystal"	Ice Crystal, Snowmi, Jolly, Dasher, Dancer
"Sexyland"	Mrs. Claus, Rudolph, Strippers
"Lap Dance"	Snowmi, Zip and Ice Crystal
"The Road to the North Pole"	Yuletide Gay, Tony Frost, Herbie, Auditioners
"To Be A SnowGirl"	Snowmi, Yuletide Gay, Herbie, Dancers

ACT TWO

"Elves on the Shelves (or Holes on the Poles)"	Naughty and Nice
"Christmas Is Coming (And So Am I)"	Ice Crystal and Dancers
"Pas de Deux"	Ice Crystal and Snowmi
"Sex on Ice"	Zip, Snowmi, Skaters
"Finale"	Company

Trim Our Trees with Holiday Cheer!

*Leave a special message on our trees
with a colorful ornament.*

Red Ornament: \$1

Orange Ornament: \$5

Yellow Ornament: \$10

Green Ornament: \$25

Blue Ornament: \$50

Purple Ornament: \$100

Silver Ornament: \$250

Gold Ornament: \$500

Snowflake: \$10/month

**Get an OFTC Mug
with a \$25/monthly
recurring donation!**



COMMITMENTS & VALUES

MISSION

Out Front Theatre Company's mission is to tell LGBTQIA+ (Lesbian, Gay, Bisexual, Transgender, Queer, Questioning, Intergender, Asexual) stories.

VISION

Out Front Theatre Company's vision is to strengthen the LGBTQIA+ community in Georgia by exploring and celebrating the universal human experience through the lens of gender and sexuality.

EQUALITY, DIVERSITY, & INCLUSION COMMITMENT

The staff and board of Out Front Theatre Company want to put the following metrics in place so that we can track them to completion. We want our stakeholders and our patrons to see real results.

- We want to have representative board members from black and brown communities, as well as gender nonconforming representatives and increase that representation by at least 10% every year until we reach a goal of above 50%.
- We want to produce, support, or promote at least 2 shows/events from creatives of color every year and increase that number by at least 20% every year.
- We want to increase our presence in communities of color and in women's communities through intentional outreach. We can do this by creating a communication strategy to expand our patronage. To that end, we will recruit a community outreach intern or staff member to help achieve this goal.
- We want to increase our intersectional involvement by partnering with other socially progressive nonprofit organizations to collaborate on community events. The goal is to have at least one partner event per year with an ultimate goal of three per year.

Please visit
www.OutFrontTheatre.com
to learn more.



LAND ACKNOWLEDGMENT

We are gathered on the unceded land of the Mvskoke (Muscogee/Creek) peoples. We ask you to join us in acknowledging the Mvskoke community, their elders both past and present, as well as future generations. Out Front Theatre Company also acknowledges that it was founded upon exclusions and erasures of many Indigenous peoples, including those on whose land this institution is located.

This acknowledgment demonstrates a commitment to beginning the process of working to dismantle the ongoing legacies of settler colonialism.



THE MUSCOGEE NATION

**For more information on this nation,
as well as how to support to them,
please visit www.muscogeenation.com**

CAST & CREW BIOS

CAST

ANNA HOLLAND *She/Her* (Snowmi Malone) is so excited to return to Out Front! Previously, she appeared as Natalie Portman in *All the Natalie Portmans*. Previous Atlanta credits: Female U/S in *Beautiful: The Carole King Musical* (Aurora), Hermia in *A Midsummer Night's Dream*, Marina in *Pericles*, and Benvolio in *Romeo & Juliet* (Atlanta Shakespeare Company), and Deb in *Ordinary Days* (Stage Door). Other favorite credits include Roxie Hart in *Chicago* and Young Alison in *Fun Home* (Hollins Theatre). Happy Holidays! Stay in touch on Instagram @annarachelholland.

BEKAH MEDFORD *She/Her* (Ice Crystal Connors) thrilled to make her debut performance on Out Front's stage with this fun show and production team! Most recently you may have seen her as Logainne in Marietta Theatre Company's *Spelling Bee*. Regional credits include performances with Seattle RSD, Georgia Ensemble, D4C touring and Walt Disney World. Other credits: Gypsy Theatre, Stage Door, Shakespeare on Draught, Marietta Theatre Company, Woodstock Arts, The Weird Sisters among others. Bekah is currently represented by Heyman Talent. Follow along with her many theatrical adventures @bekmedford. Thank you for supporting live theatre and thank you Paul and Out Front for letting me join your theatre family!

TYSHAWN GOODEN *He/Him* (Zip Merry) is thrilled to be back on the Out Front stage! Previous Out Front Theatre credits include: Green/Mr. Tape in *RED: A Crayon's Musical* and JR in *Jerker*. Previous Atlanta credits: *Bootycandy*, *Desire Under The Elms*, *Sunset Baby* (Actor's Express), *Mufaro's Beautiful Daughters*, *The Little Prince* (Synchronicity Theatre), *As You Like It*, *A Midsummer*

Night's Dream, *Troilus and Cressida* (Atlanta Shakespeare Tavern), *Rathskeller* (SheATL Arts Festival), *RENT* (Act3 Productions). Regional Credits: *The Hound of the Baskervilles* (The REV Theatre Company), *A Midsummer Night's Dream* (The Warehouse Theatre), *The Winter's Tale* (The Phoenix Theatre), *Hamlet* (Dramatic Question Theatre). IG: @its_all_gooden

KATIE WICKLINE *She/Her* (Jolly Goodfellow) is incredibly jolly *bah dum tiss* to be making her Out Front Theatre debut! A few Atlanta credits include *Robin Hood* (Topsy Tales), *Save the Video Store!* (Into the Film), *Sketchy Solstice* and *Pop! Goes the Fandom* (Sketchworks Comedy), *12 Angry Jurors* (Act3 Productions), and *The Big Meal* (OnStage Atlanta). Touring credits: *Energy Endgame* (National Theatre for Children). She has a BA in Theatre from Florida State University. She is also a sketch writer, teaching artist, voiceover talent, and tomfoolerist. Many thanks to her family (who kindly agreed to stay home for this show) and friends (who eagerly agreed to cum to this show) for supporting her love of musicals and dick jokes. Instagram: @ktmariewick

LILLY ANAYEH *She/Her* (Yuletide Gay) is so excited to make her Out Front Theatre Company and Atlanta Theatrical debut! Past Theatre credits include: *A Christmas Story* (Esther Jane, Barter Theatre), *Sleeping Beauty* (Miranda, Barter Theatre), *My Imaginary Pirate* (Phoebe, Barter Theatre), *Tuck Everlasting* (Stranger, Barter Theatre) *9 to 5* (u/s Maria, Barter Theatre), *All I Want For Christmas...* (Lucy/ Music Director, Barter Theatre), *Jingle All The Way* (Choreographer, Barter Theatre), and *9 to 5* (*current project, Choreographer, Chattahoochee High School). She thanks her family and friends for their immense support and love! @lillyanayeh

CAST & CREW BIOS (CONTINUED)

NOAH VEGA *He/Him* (Herbie) is elated to be making his Out Front Debut! Noah holds his BFA in Musical Theatre from Kent State University. Favorite Ohio credits: *The Secret Garden* (Magical Theatre Company), *Beauty & The Beast* (Akron Civic Theatre), *Joseph... Dreamcoat* (Weathervane Playhouse), and *La Gringa* (Latinx in Theatre). Much love to Andrew, Kari, Peaches, Mom and Lance (for getting me back on the stage)! Check him out as @noahavega on Instagram.

JESSICA WISE *She/Her* (Dasher) is elated to be returning to the Out Front stage, previously performing in *Christmas Dearest* and *Kinky Boots*. She is an Atlanta-local writer and performer, currently working on her original script to stage in the new year. She has also been seen in Stage Door Theatre's 2021-2022 season as Lady Capulet in *Romeo & Juliet*, Lady Bracknell in *The Importance of Being Earnest*, and more. By day, she works as a copywriter for a local ad agency and runs her e-magazine for young professionals and small business owners, Audacity Magazine & Events (audacitymagazine.org, @audacitymagonline on Instagram).

ALLISON MARTIN *She/Her* (Dancer) is SO excited to be making her Out Front Theatre Debut! She graduated from Austin Peay State University (TN) in 2021 with a BFA in Musical Theatre. Previous credits: *Chicago* (Town Square Playhouse), *Fabulous 50s Show* (Badgett Playhouse), and *The Last Five Years* (Margaret Fort Lab Theatre). Allison is also a featured female vocalist with Atlanta Wedding Band, gigging around the Southeast for the past couple years. Follow her @allisonmartin38 on Instagram! Happy holidays to all and enjoy the show!

BLAKE FOUNTAIN *He/Him* (Tony Frost/ Santa) is feeling bright-eyed and bushy-tailed to be back at Out Front. Previous Out Front Theatre credits include *Ruthless!*, *Christmas Dearest*, *The Golden Girls: The Lost Episodes - The Holiday Edition*, *Bright Colors & Bold Patterns*, and *Christmas with the Crawfords*. You also may have seen his alter-ego, Tugboat the Queen, around town, at various Triangle Cabaret events, or out in local hardware stores elbows-deep in buckets of mixed screws raising awareness for miniature ponies. Previous Atlanta credits include *Fiddler on the Roof*; *Mary Poppins* (City Springs Theatre Co.), *The Wizard of Oz*; *Guys and Dolls* (Atlanta Lyric), *Bullets Over Broadway*; *Leading Ladies* (Georgia Ensemble Theatre), *Clue: On Stage*; *I Love You Because* (Marietta Theatre Company). Buckets of love to Nana, Sam, Butter, Bean, and my entire Out Front chosen family. Follow him @nonsmokingpartyoftwo and @tugboatthequeen

KELSEY SOUTH; *She/Her* (Mrs. Claus) is an ATL native, but is honored to be sledding onto Out Front's stage for her first time! Previous Atlanta Credits: Beezus in *The Real Housewives of Marietta, the Musical*, Sister Amnesia in *Sister Amnesia's Nonsense Jamboree*, Rapunzel in *Disenchanted!*, Paddy in *Frosty!*, *Real Life: a Hip-Hopera*, *Four Old Broads*, Mother Superior in *Nonsense*, Jenny in *It Shoulda Been You*, Noletta in *Sordid Lives*, and many more. She never thought she would be expanding her chosen family by so many during this show process and couldn't be happier. Huge thanks to her boyfriend Charles, who is dating an actor for the first time, and has been very understanding and supportive. Kisses to mom, dad, and fur-son Snuggles. Thank you for supporting local theatre and the LGBTQIA+ community. Everyone deserves a safe space to be their authentic artist! IG: @kelseyhippie

CAST & CREW BIOS (CONTINUED)

JARED BROWN *He/Him* (Rudolph/The Grinch) is thrilled to make not only his Out Front Theatre debut but also his musical debut in the hilarious *SnowGirls*. He has the pleasure of working with director Paul Conroy and bringing to life both Rudolph and the Grinch. Jared has worked with the Atlanta City Theatre with their productions of *SWEAT*, in which he won an award for best acting, and *Bunmi* and *Babajide: Much Ado in Lagos*, an adaptation of Shakespeare's *Much Ado About Nothing*. He has also worked with Dalton State College Theatre in *Foark River* and *Steel Magnolias*. Jared would like to thank the wonderful cast and crew for making him feel welcome at Out Front Theatre. IG: @official_jaredbrown

KARASTYN BIBB *She/They* (Cookie) is thrilled to be making their Out Front debut! Now a recent alum of Georgia Ensemble Theatre's Acting Apprenticeship, you may have seen them around Atlanta in *Head Over Heels* as Mopsa (MTC), Amanda in *Women in Jeopardy* (GET), or Naomi in *She Persisted* (GET Travel Team). Other regional credits include the world premiere of *FLEX!* (Theatrical Outfit), *Bright Star* (GET), *Cinderella* (Springer Opera House), and Muddy Water Theatre's *R + J Theory*. They would like to thank the truly lovely people in their life for their immense support and hope you enjoy the show! IG: @knbibb

KYLE GRAVES *He/Him* (Naughty) is thrilled and thankful to finally be returning to the stage since the pandemic, and couldn't be happier to make his Atlanta theatre debut with this company. Out Front Theatre: Debut. Previous credits: *The Who's Tommy* (Black Hills Community Theatre), *Once Upon A Mattress* (Black Hills Summer Stage), *West Side Story* (Advocates for Creative Theatre), and The Rat King in *The Nutcracker* (Black Hills Dance Theatre). He sends his love to his

chosen and given families. Follow him @smile_with_kyle on Instagram.

LOGAN REED *He/Him* (Nice) is thrilled to be making his Out Front Theatre Debut! He graduated from Austin Peay State University in 2021 with a BFA in Acting/Directing, and he has gotten to work on many different exciting projects since moving to Atlanta. Previous credits include *A Year With Frog and Toad* (Woodstock Arts) and *A Raisin in the Sun* (Marietta's Theatre in the Square). He has also gotten to work on several immersive theatre experiences including *The Stranger Things Experience* (Netflix x Fever) and *The Little Mermaid Immersive Adventure* (Disney x CAMP). Thank you so much for coming to see the show and for supporting the arts in Atlanta!

ISAAC BREIDING *He/Him* (Swing): is on his 3rd show with Out Front. Previous Out Front credits include *Christmas Dearest* (Swing) and *I Wanna F*cking Tear you Apart* (Leo u/s). Other Community Credits include *Little Shop of Horrors* (Mr.Mushnik), *The Wiz* (Tin-Man), *Shrek: The Musical* (Pinocchio), and *School of Rock* (Theo).

PRODUCTION CREW

PAUL CONROY *He/Him* (Director) is the Founder and Producing Artistic Director of Out Front Theatre Company, Georgia's LGBTQIA+ focused theatre company. Originally from the Boston area, he holds a BA in English/Writing with a Minor in Theatre from Long Island University in addition to both a MA in Directing from Roosevelt University and a MFA in Directing from the University of Idaho, and as a playwright his original musical, *The Ethel Merman Disco Christmas Spectacular!* (which he also directed) premiered at Out Front Theatre Company in December of 2018. Other

CAST & CREW BIOS (CONTINUED)

select directing credits at Out Front include *Priscilla, Queen of the Desert: The Musical*, *The Most Fabulous Story Ever Told*, *The View UpStairs*, *La Cage aux Folles*, *Xanadu*, *Kinky Boots* and most recently *Ruthless!*. Paul teaches courses in Theatre at Georgia State University, sits on OUT Georgia's Board of Directors as Nonprofit Liaison and will soon conclude his six-year term as a founding member of the City of Atlanta's LGBTQ+ Advisory Board for which he chairs the Arts, Culture and Entertainment subcommittee. He was named one of Georgia's 100 Most Influential LGBTQ+ people in 2020 and has been featured in The New York Times, The Times of London and numerous other media outlets speaking about the importance of queer centered arts. Paul is the co-founder of both the Queer Theatre Alliance, an international coalition of LGBTQ+ centered theatre companies and AQUAA, the Atlanta Queer Arts Alliance, which focuses on enhancing Atlanta's vibrant and vital LGBTQ+ focused arts organizations.

ALLI REINHARDT *She/Her* (Music Director) Atlanta: *Ruthless! The Musical* (Out Front Theatre); *The Christians*, *Company*, *Falsettos*, *Fun Home*, *Head Over Heels*, *Heathers*, *Sweeney Todd*, *Rent* (Suzi Bass award nomination - Music Direction), *The Rocky Horror Show* (Actor's Express); *The Pretty Pants Bandit* (Georgia Ensemble Theatre); *Freaky Friday*, *Nobody Loves You* (Suzi Bass award nomination - Music Direction) (Horizon Theatre); *The Light in the Piazza* (Theatrical Outfit); *The Last Five Years* (independent production, Alliance Theatre); *Sweeney Todd* (DramaTech Theatre). Regional: *Children of Eden*, *Thoroughly Modern Millie* (Gainesville Theatre Alliance); *Forever Plaid* (Jekyll Island Musical Theatre Festival); *A Little Night Music*, *Ragtime*, *The Secret Garden* (Peach State Summer Theatre). Education: Masters

of Music Literature & Theory, The University of Georgia. "To my CCR and Hadley Sue, I love you the most!"

COURTNEY LOCKE *She/Her* (Choreographer) is so excited to be back at Out Front! She was most recently seen as Louise/Eve in *Ruthless!* Some of her past credits include *Broadway Baby Mamas* (Actor Mommy Productions @ Aurora Theatre), *The Rocky Horror Show & Sister Act* (Woodstock Arts), *Chicago* (Gainesville High School), *Mamma Mia* (Etowah High School), and *Nevermore* (Brookwood High School). Thank you to Paul and the rest of the creative team for another incredible experience. Thank you to the cast for being up to trying new things! And finally, to the Queen: Elizabeth Berkley... for without her, we would have been lost.

MAHALA DAWN *She/Her* (Production Stage Manager) Out Front Theatre: Debut. Other Atlanta Credits: *Hedwig and the Angry Inch*, *A Prayer for the French Republic*, *Urinetown*, *Sunset Baby*, *Heathers*, *Crossroads*, *Fun Home*, *Downstairs*, *Skintight* (Actor's Express). *Cassie's Ballad* (Found Stages). So much love and kisses to Emma Eisnagle (and the rest of our stage management family) for all of their support and encouragement.

ERIC GRIFFIS *He/They* (Costume Designer) is the Professor of Costume Design and Chair for the Department of Theatre and Dance at Georgia College & State University. Previous designs at Out Front include *Homos*, *Or Everyone in America*, *The Golden Girls: The Lost Episodes - Holiday Edition*, *warplay*, *Christmas with the Crawfords*, *I Am My Own Wife*, and *Porcelain*. Other designs include *The Marriage Counselor* and *The Last Five Years* for Birdhouse Theatre, and *These Shining Lives*, *The Legend of*

CAST & CREW BIOS (CONTINUED)

Georgia McBride, *Ride the Cyclone*, *The Revolutionists*, *Heathers*, *Crowns*, and *Cabaret* for GCSU. Visit ericgriffis.com to see more of his work.

CATHLEEN O'NEAL *She/Her* (Wig Designer) is so excited to be making her Out Front Theatre: Debut. Previous Atlanta credits include, Costume Designer for *Abigail, 1702* (Aurora Theatre), Stitcher for *Mamma Mia* (Aurora Theatre), Stitcher for *The Hunchback of Notre Dame* (Aurora Theatre), Costume Designer for *A Midsummer Nights Dream* (Holy Innocence Episcopal School), Costume Designer for *The Wizard of Oz* (HIES), Costume Designer for *Frozen Jr.* (HIES), Costume Designer for *Alice Through the Looking Glass* (HIES), Costume Designer for *Head Over Heels* (Georgia College and State University), Hair and Makeup Designer for *The Revolutionist* (GCSU), Hair and Makeup Designer for *Heathers* (GCSU). Cathleen works full time at Georgia College and State University as the Costume Shop Supervisor. Follow her on instagram @cathleenonealcostumedesign.

LUKE EVANS *He/Him* (Dramaturg) is an Atlanta-based dramaturg, playwright, and theatre critic. He previously served as a dramaturg for Out Front Theatre's productions of *Kinky Boots* and *I Wanna Fucking Tear You Apart*. Luke earned his undergraduate degree from Oglethorpe University before earning his master's degree in Theatre Studies from the University of Houston. He is currently a theatre critic for ArtsATL and has also written for the AJC. He is an out and proud neuroqueer artist and his work always seeks to champion neurodivergent inclusion.

GRACE DAVENPORT *She/They* (Assistant Director) is so excited to be back at Out Front AD'ing *SnowGirls!* Previous Out Front Theatre credits include: Malvolio in *Bad Romance* and Assistant Director for *Ruthless!* Previous Atlanta credits include: Chicklet (u/s) in *Psycho Beach Party* and Trebonius in *Julius Caesar* (Atlanta City Theatre). Assistant Stage Manager for *Red Speedo* (Actor's Express). Previous Regional credits include: Janet Van De Graff in *The Drowsy Chaperone* (Linda Miller Theatre), Wednesday Addams in *The Addams Family* (Linda Miller Theatre), and Denise in *A Sander's Family Christmas* (Gilmer Arts). She would like to thank her friends and family for their support of her passions. IG: gmellofly_ Christmas is coming, and so are we. <3

MAEKAYLIA JACKSON *She/Her* (Assistant Stage Manager) is excited to continue learning at Out Front! Previous Out Front Theatre credits: *The Prom* and *Kinky Boots*. Previous Atlanta credits: *The Cycle A Devised Theater Project* and *Hamilton Unplugged* (The BlackOut Company). Follow her on Instagram @maekaylia.





AT THE WAKE OF A

DEAD
DRAG
QUEEN

By Terry Guest

Directed by **Damian Lockhart**

In rural Georgia, drag star Courtney Berringers (given name: Anthony Knighton) would like to welcome you to her wake. She has recently died from complications due to AIDS, you see. But make no mistake, this isn't your grandma's funeral. There will be no black frocks, no perfumed flowers, and definitely no crying. Tonight is a celebration.

FEB 1-17, 2024

Tickets: \$15+

Out Front Theatre Company
999 Brady Avenue, Atlanta



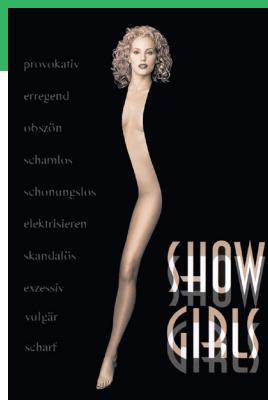
REGIONS

Production Sponsor JP Signature Homes Team

www.OutFrontTheatre.com

Dramaturgy

Believe it or not, Derek Van Barham, David Cerda, Scott Lamberty, and Jeff Thomson did not come to the decision to write about pole-dancing reindeer by themselves. They were inspired by perhaps one of the most influential disasters (used in the fondest sense) of the 1990s: that would be 1995's *Showgirls*. Starring Elizabeth Berkley as the rough-and-tumble Nomi Malone, the film took aim at the glitz, the glam, and the grime of the Las Vegas strip. What emerged was one of the most wildly divisive, shockingly indulgent, and unintentionally campy works of the late 20th century.



Showgirls was written by Joe Eszterhas and directed by Paul Verhoeven, who were riding the commercial success of their previous collaboration, 1992's *Basic Instinct*. The film tells the story of Nomi Malone, a drifter who hitchhikes her way to Las Vegas with dreams of becoming a dancer and ends up tumbling down the show business rabbit hole, dealing with affairs and betrayal in a world fueled by cut-throat ambition and corporate greed. Not to mention the topless dance numbers and aerobic sex scenes.



If this description sound dramatic, it is because *Showgirls* was clearly intended to be. The acting is over-the-top, the dialogue is faux-edgy, and the production value is admittedly eye-catching. Rather than a searing drama, however, the film quickly garnered a cult reputation as a raunchy, so-bad-it's-good comedy. Young queers held viewing parties for the sole purpose of mocking it. People shrieked with laughter as Elizabeth Berkley flopped like a seal in a backyard pool, in the throes of physics-defying intercourse. MGM eventually caught

onto the film's ability to draw in camp-seeking queers and began hiring drag queens to host screenings in New York and L.A. These screenings saved *Showgirls* from total financial failure, eventually leading the film to become a camp classic.

Despite all of this, hardly anyone who watches the movie, even those who enjoy it, would consider it a "good" movie. It got skewered by critics. Many started referring to particularly egregious guilty pleasures as "*Showgirls*-bad." Elizabeth Berkley was dropped by her agent and couldn't get anyone to take her calls for months.

What more could a parodist ask for?

Avail yourselves of the bar. Hoot and holler to your heart's content. Channel the energy of those 90s queers (or think back on when you were one of them) and let yourself revel in the silliness. See if you can spot your favorite moments, and feel free to let the entire audience know. It's the North Pole—let's get jolly.



— Luke Evans, Dramaturg

Award-Winning Design

Done in-house and *on-budget*.

Brandon D Hunt

Materializing ideas through design.

PRINT • DIGITAL • ILLUSTRATION • BRANDING

brandondhunt.com

(888) 239-5551



CONNECT WITH US!
#OutFrontSnowGirls

Facebook: Out Front Theatre Company

Threads: @outfronttheatre

Instagram: @outfronttheatre

Snapchat: outfronttheatre

Venmo: @outfronttheatre



WHO WE ARE

Out Front Theatre Company was established to tell stories of the LGBTQIA+ (Lesbian, Gay, Bisexual, Transgender, Queer, Intergender, Asexual) experience and community, giving voice to LGBTQIA+ authors, composers, artists, and creators through the medium of theatre and the performing arts. Out Front plans to develop new works and produce classic pieces of theatre that have communicated these stories of the LGBTQIA+ population to a wider audience over time.

As a non-profit organization with a dedicated focus to better the LGBTQIA+ population, we strive to:

- **Produce** established works and premiere productions created by members of the LGBTQIA+ society,
- **Generate** productions with universal themes which are important to the LGBTQIA+ community,
- **Educate** the populous to LGBTQIA+ history,
- **Work** with local and national LGBTQIA+ organizations to bring awareness of issues facing the LGBTQIA+ to the greater Atlanta area,
- **Create** artistic and educational opportunities for at-risk LGBTQIA+ youths by collaborating with local educational institutions and organizations,
- **Expand** the number of theatrical opportunities for artists who are members of or who support the LGBTQIA+ community.

Out Front hopes to create a narrative that will reach beyond the stage, into the

conversations and minds our audiences and artists. Theatre's power as a catalyst to spur dialogues goes back thousands of years. Out Front lives to continue that grand tradition of bringing the stories of the LGBTQIA+ people into the spotlight.

LGBTQIA+ Definitions

L stands for Lesbian: Term used to describe female identified people attracted romantically, erotically, and/or emotionally to other female identified people.

G stands for Gay: Term used in some cultural settings to represent male identified people who are attracted to other male identified people in a romantic, erotic and/or emotional sense. Also, a term used to refer to the LGBTQIA+ community as a whole or as an individual identity label for anyone who does not identify as heterosexual.

B stands for Bisexual: A person emotionally, physically, and/or sexually attracted to people of more than one sex and/or gender. This attraction does not have to be equally split between genders and there may be a preference for one gender over others.

T stands for Transgender: A person who lives as a member of a gender other than that expected based on anatomical sex. Sexual orientation varies and is not dependent on gender identity. This term is sometimes used to refer to the gender variant community as a whole.

Q stands for Queer: An umbrella term, which embraces a matrix of sexual preferences, orientations, and habits of the not-exclusively-heterosexual-and-monogamous majority. Queer includes lesbians, gays, bisexuals, transpeople, intersex persons, and many other sexually transgressive explorers. The term is sometimes used as a sexual orientation label instead of 'bisexual' as a way of acknowledging that there are more than two genders to be attracted to, or as a way of stating a non-heterosexual orientation without having to state who they are attracted to.

I stands for Intergender: Intergender people have a gender identity that is in the middle between the binary genders of female and male, and may be a mix of both.

A stands for Asexual: A term describing individuals who do not experience sexual attraction or do not have interest in or desire for sex. Asexuality is different from celibacy, which means abstaining from sex. Asexuality is often viewed as a spectrum – meaning there are varying levels and identities regarding someone's emotional, spiritual and romantic attraction. The best way to refer to the asexual community is to use the umbrella term "ace" or "aces" as in the "ace community," which acknowledges that spectrum.

+ stands for Many Other Identifications including, but not limited to pansexual, genderqueer, polysexual, agender, androsexual, demisexual, and skoliosexual. We strive to be as inclusive as we can and know we can always improve.

Please visit outfronttheatre.com for a more expansive list of identities, sexualities, terms, resources and more

We welcome all humans, regardless of labels, and hope we celebrate and accept everyone regardless of how they identify.



STAFF AND BOARD LIST

Out Front Theatre Company Staff

Paul Conroy (*He/Him*) -
Founder & Producing Artistic Director

Precious West-Allen (*She/Her*) -
General Manager

Justin Kalin (*He/Him*) -
Associate Artistic Director

Brady Brown (*He/Him*) - Director
of Marketing & Communications

Robby Myles (*He/Him*) -
Box Office Manager

Mandy Mitchell (*She/Her*) -
Education Director

Sydney Lee (*She/Her*) -
Production Manager

Madison Grant (*She/Her*) -
Shop Manager

Anna Dvorak (*She/Her*) -
Special Events Coordinator

TJ Ruth (*He/Him*) - Executive Assistant

Board of Directors & Officers

Clint Clark-Duke (*He/Him*) - Chairperson

Blake Fountain (*He/Him*)
- Vice Chairperson

Jay Reynolds (*He/Him*) - Treasurer

Kelly Tonina Cooper (*She/Her*)
- Secretary

Sandy Mollett (*She/Her*)

Dr. Jesse Peel (*He/Him*)

Stephen MacDonald (*He/Him*)

Brad Bernstein (*He/Him*)

Jason Feldman (*He/Him*)

Steven Igarashi-Ball (*He/Him*)

Evan Robert Brown Walker (*He/Him*)

Donation Listing

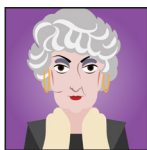
Donations made between July 1, 2023 - November 30, 2023.

Out Front Theatre Company is a 501c3 non-profit organization. The health of the company depends on support from patrons just like you! All donations are 100% tax deductible and greatly appreciated! No gift is too small because it truly takes a community to make the arts thrive and grow.

We wouldn't be here without the support of the friends listed below and we would LOVE to add your name to our list of supporters! Donation information is available at the box office or at outfronttheatre.com.

THANK YOU FOR BEING A

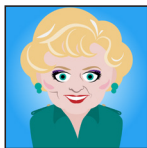
friend



DOROTHY (\$5,000+)

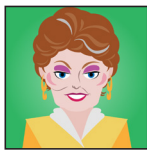
Anonymous (2)
Dr. Hal Brody
& Mr. Donald Smith

Jay Reynolds and Michael Barnett



ROSE (\$2,500 - \$4,999)

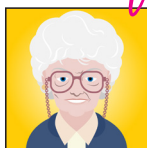
Jackson Autry
Steve Hagen
Josh Pitre



BLANCHE (\$1,000 - \$2,499)

Anonymous (3)
Jeffrey Allen
Mary Anne Walser

Corregan Brown
Jody & Michael Feldman
Warren Gump
Becky McInturff
Tom Sands
Joe Sequeria



SOPHIA (\$500 - \$999)

Anonymous
Ken Skalitzky
Alison Weidner



MILES (\$100 - \$499)

Anonymous (2)
Austin Alexander
Dennis Barrett

David Bearse
John Bowden
Cynthia Cline
Leslyn Cooper Parks
Dennis Dean
Scott Evers and Al Besse
James Fortier
Bruce Garner
Edward Gaulrapp
Elyse Haber Freedman
Rusty Haber
William Hansen
Steven Igarashi-Ball
Grant Knox and Brian Smith
Michael Marolla
Elizabeth Medin

THANK YOU FOR BEING A

friend

Melissa Miller
Harrison & Ava Reeves
Ryan Rodriguez
Richard Shivers
Ken Skalitzky
Robin Swett Newberg
Jonathan Throop
Richard Vitaris
Robert Wayne
Emily William Jordan
Barbara Woodlon
Howed Yorek



STAN (\$1 - \$99)

Anonymous (89)
Jeremy Allan
Mark and Jill Rosenberg

Joe and Jeff Donovan
Aaron Andrew Harris
Kimberly Asher
Mandy Ayers
Susan Baker and Nancy Strauch
Denise Barrett
Dennis Barrett
Dave Bearse and Clinton Patters
Ryan Bee
Jana Benhardt
George Bergmark
Christine Carroll
Terry Chongulia
Will Cole
Maryrose DeGroot
Cynthia DeVille & Andrea Baker
Paige Drye
Ian Evatt
James Faust
Louis Fuerstman
Lous Fuestman
Patrick Garver
Corinne Graffunder
Jodi Greenwald

Edith Guyton
Rusty Haber
Mark Hamlin
Amanda Harris
Natalie Hazen
David Holmes and John Rowell
Mitchell Ivers
Alyssa James
Quintara Johnson
Tanya Johnson
Whitney Johnson
Njai Kenon
Caroline King
Amy King
Glen L. Frankel
Wendy Layne
John Maddox
Emily Maynard
Wendy Melkonian
Terence Ng
Leonard Pallatts
Kyler Patterson
Kyle Patterson
Megan Poole
Tamara Powell
Joy Purcell
Lawrence Rathburn
Andrea Rattray
David Rossetti
William Seright
Matthew Smith
John Stegall
Nicole Stein
Aubrie T. Goodson
Duncan Teague
Celenia Toledo
James Triplett
Juan Unzueta
Clark Weisner
Janelle Zabresky

ENGEL&VÖLKERS®



Unlock Your Real Estate Dreams with a Purpose: Supporting Out Front Theatre Together

Join me in supporting Out Front Theatre as we work together to fulfill your real estate aspirations! I'm committed to donating **20% of my commission** to Out Front Theatre in your name. Simply let me know you were referred by them. Feel free to reach out to me via call, text, or email any time.



Adam Parker | Your Local REALTOR®
1745 Peachtree Street, Suite T | Atlanta | GA 30309
M 404-849-9829 | O 404-845-7724
adam@evatlanta.com | adamparker.com

Keeping the Focus on You



Whether your goals include retirement, education or a major purchase – such as a second home – we always begin with what's most important to *you*.

Let's Talk



678.871.2222

www.ElementWealthAdvisors.com

wagamama

free shareable
with your theater
ticket

find us at

1050 howell mill rd,
atlanta, ga 30318
(4 min walk)

one per person | t's and c's apply |
purchase of a main required



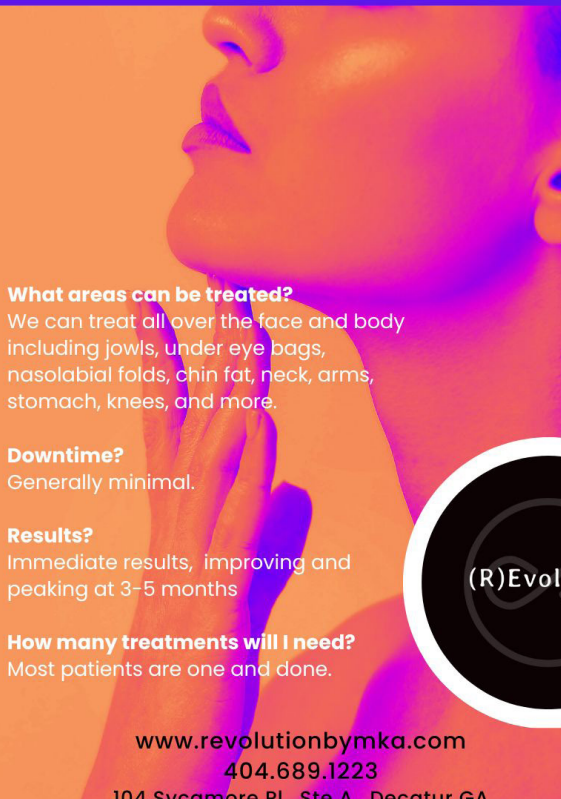
noodles * dumplings * ramen * craft cocktails * fresh juices



VARLA JEAN MERMAN

One Night Only

APRIL 13, 2024



EndoLift is here and only at (R)Evolution!

This minimally invasive laser procedure **lifts, tightens,** and **dissolves fat** all over the face and body.

What is EndoLift?

EndoLift is a non-ablative laser treatment that both removes unwanted fat and tightens the skin. It has 15+ years of study data and is increasingly preferred as a non-surgical option in the U.S.

What areas can be treated?

We can treat all over the face and body including jowls, under eye bags, nasolabial folds, chin fat, neck, arms, stomach, knees, and more.

Downtime?

Generally minimal.

Results?

Immediate results, improving and peaking at 3-5 months

How many treatments will I need?

Most patients are one and done.



Mike Kelleher,
MMS, PA-C

www.revolutionbymka.com
404.689.1223
104 Sycamore Pl., Ste A., Decatur GA



SHOP OUR ONLINE STORE!



Get all your Out Front merch
only at [OutFrontTheatre.com/shop](https://www.outfronttheatre.com/shop)

- ✓ TShirts
- ✓ Hoodies
- ✓ Crop Tops
- ✓ Leggings
- ✓ And more!





OUR 2023 – 2024 SEASON



FEB 1 – 17, 2024
By Terry Guest
GEORGIA PREMIERE



MAR 14 – 30, 2024
By Audrey Cefaly
GEORGIA PREMIERE



MAY 2 – 18, 2024
By Charles Busch

INSIGHTFUL

INNOVATIVE

INCLUSIVE