



GEORGIA PREMIERE!

The Gulf



By **Audrey Cefaly**

Directed by **K. Parker**

MAR 14-30, 2024

#OutFrontGulf



FULTON COUNTY
ARTS & CULTURE

ATL



REGIONS



Production Sponsors

**DR. HAL BRODY &
MR. DONALD SMITH**



www.OutFrontTheatre.com

A Note from Paul



Exciting new American plays touch on corners of our country and society that are rarely examined. Looking through lenses that not that long ago felt forbidden, we can now dive deep into dynamics and relationships that feel raw and real. Those are the journeys that excite and scare us. They pull us in and hold up that clichéd mirror so we can self-examine ourselves. That's what good theatre can do.

Even within the LGBTQIA+ community, there are microcosms that aren't always given their due time in the light. Collectively, we need to make sure that these people and their stories are told earnestly and honestly, as both audiences and artists. Universal stories transcend the barriers that society has created and reinforced for generations, so my hope is that, even when we don't see "ourselves" on stage, we can connect with the story we are being told - that we are invited in and maybe the mirror we've held up to ourselves shows a slightly different reflection from the one we expected to see.

Our stories and our community are ever evolving, and that, again, can be both exciting and scary. The show you'll see here tonight is exciting and scary. It holds up a magnifying glass to a section of our country and community rarely examined. It should make all of us scrutinize ourselves, even if at first glance we don't think we see "ourselves." This is what good theatre should do.

Thanks for taking another leap into the deep end with us.



Paul Conroy (*He/Him/His*)

Founder & Producing Artistic Director
Out Front Theatre Company



presents

The Gulf

BY

Audrey Cefaly

STARRING

Jamie Goss, Daryl Lisa Fazio, and Shannon Murphy

DIRECTOR

K. Parker

**PRODUCTION
STAGE MANAGER**

Tamiea Anderson

**LIGHTING
DESIGNER**

Beate M. Czogalla

**COSTUME
DESIGNER**

Alison May Hergen

**SCENIC
DESIGNER**

Sof Delgado

SOUND DESIGNER

Kait Rivas

DRAMATURG

Dalyla Nicole

PROPS DESIGNER

Sydney Lee

INTIMACY DIRECTOR & FIGHT CHOREOGRAPHER

Lilly Baxley

The videotaping or other video or audio recording of this production is strictly prohibited.



**FULTON COUNTY
ARTS & CULTURE**



This program is supported in part by Georgia Council for the Arts through the appropriations of the Georgia General Assembly. Georgia Council for the Arts also receives support from its partner agency - the National Endowment for the Arts. This program is supported in part by the City of Atlanta Mayor's Office of Cultural Affairs. Funding for this program is provided by the Fulton County Board of Commissioners.



The Gulf



SETTING: *A fishing boat. Late afternoon. Alabama Delta.*

TIME: 2016

This play is performed without an intermission.

Cast & Creative Team

CAST

Betty..... Jamie Goss
Kendra.....Daryl Lisa Fazio
Understudy..... Shannon Murphy

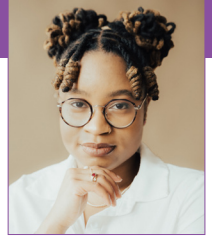
CREATIVE TEAM

Director K. Parker
Production
Stage Manager.....Tamiea Anderson
Lighting Designer.....Beate M. Czogalla

Costume Designer..... Alison May Hergen
Scenic Designer Sof Delgado
Sound DesignerKait Rivas
Props Designer..... Sydney Lee
Dramaturg..... Dalyla Nicole
Intimacy Director/
Fight Choreographer Lilly Baxley
Photographer Sydney Lee
Videographer Saturnblu Productions
Public Relations JMF Communications
Graphic Designer..... Brandon D Hunt

We apologize for anyone who may have been accidentally omitted from this program.

Director's Note



There's something strangely mesmerizing about watching people make a mess of love. Many of us have been there, a passionate meeting sweeps you off your feet. It's exhilarating, magical. "This has to be my person!" you think as you let yourself be swallowed whole by love. A love like this is all you'll ever need. Only then, something else creeps in. Arguments become commonplace. Trauma starts to make a daily appearance. Weeks go by, months, sometimes even years as you wait to feel that magic again.

How do you stop the cycle? When does the weight of a relationship bring us to a breaking point? Is love ever truly enough? Can love be the motor that keeps us moving upstream? After all, no one said love would be easy, no one said it wouldn't take some repairs. It has always been said that true love will take work. But...how much work does it actually take? And at what cost? Audrey puts us right in the middle of these murky waters with this masterpiece.

I want to dedicate this production to all of the lovers in the audience. It is my hope that your bids for connection are acknowledged by the ones you love. I hope the love you receive quenches the deepest thirst of your soul. I hope you know that the quest for love is worth it and that you are always enough.

Love always,

K. Parker (She/Her/Hers)
Director - *The Gulf*



COMMITMENTS & VALUES

MISSION

Out Front Theatre Company's mission is to tell LGBTQIA+ (Lesbian, Gay, Bisexual, Transgender, Queer, Questioning, Intergender, Asexual) stories.

VISION

Out Front Theatre Company's vision is to strengthen the LGBTQIA+ community in Georgia by exploring and celebrating the universal human experience through the lens of gender and sexuality.

EQUALITY, DIVERSITY, & INCLUSION COMMITMENT

The staff and board of Out Front Theatre Company want to put the following metrics in place so that we can track them to completion. We want our stakeholders and our patrons to see real results.

- We want to have representative board members from black and brown communities, as well as gender nonconforming representatives and increase that representation by at least 10% every year until we reach a goal of above 50%.
- We want to produce, support, or promote at least 2 shows/events from creatives of color every year and increase that number by at least 20% every year.
- We want to increase our presence in communities of color and in women's communities through intentional outreach. We can do this by creating a communication strategy to expand our patronage. To that end, we will recruit a community outreach intern or staff member to help achieve this goal.
- We want to increase our intersectional involvement by partnering with other socially progressive nonprofit organizations to collaborate on community events. The goal is to have at least one partner event per year with an ultimate goal of three per year.

Please visit
www.OutFrontTheatre.com
to learn more.



LAND ACKNOWLEDGMENT

We are gathered on the unceded land of the Mvskoke (Muscogee/Creek) peoples. We ask you to join us in acknowledging the Mvskoke community, their elders both past and present, as well as future generations. Out Front Theatre Company also acknowledges that it was founded upon exclusions and erasures of many Indigenous peoples, including those on whose land this institution is located.

This acknowledgment demonstrates a commitment to beginning the process of working to dismantle the ongoing legacies of settler colonialism.



THE MUSCOGEE NATION

**For more information on this nation,
as well as how to support to them,
please visit www.muscogeenation.com**

CAST & CREW BIOS

CAST

JAMIE GOSS *She/Her* (Betty) Out Front Theatre: Debut. Previous Atlanta credits: *Christmas Belles* (OnStage Atlanta), *Steel Magnolias* (Players Guild at Sugar Hill), *A Very Sordid Wedding* (The Process Theatre and OnStage Atlanta), *Crimes of the Heart* (Players Guild at Sugar Hill), and *The Last Lifeboat* (OnStage Atlanta). She thanks her friends, family and co-workers for all their continued support! Follow her @jamiemgoss on Instagram.

DARYL LISA FAZIO *She/Her* (Kendra) is dee-lighted to be back at Out Front after last appearing in 2020's *Bull in a China Shop*. Atlanta acting: Theatrical Outfit (*Safety Net, Boy*), Aurora Theatre (*Split in Three*), Found Stages (*Beulah Creek*), Synchronicity Theatre (*In the Next Room, or the vibrator play*), and others. Daryl is also a playwright whose work has been produced in Atlanta (Theatrical Outfit, Actor's Express, Aurora Theatre, Horizon Theatre), regionally (Florida Rep, Penobscot Theatre), and Off-Broadway (Theatre Row, New York Musical Theatre Festival). She studied theatre at Northwestern University and playwriting in the school of life. In her spare time, she loves to rescue animals, build people up, and challenge herself. She wants you to go home an Audrey Cefaly fan, if you're not one already. www.darylspays.com

SHANNON MURPHY *She/Her* (Understudy) is an Atlanta native and Kennesaw State University graduate (BA Theatre and Performance Studies; 2019). Professional credits: Out Front Theatre: Debut; *Oh, To Be Pure Again* (Actor's Express); *The Pretty Pants Bandit* (Georgia Ensemble Theatre); *Cabaret* (Serenbe Playhouse); *The Threepenny Opera* (7 Stages Theatre). Collegiate Credits: Heather Chandler in *Heathers*; Ilse in *Spring Awakening*; Masha in *Three Sisters**. Commercial: Buffalo Wild Wings (National); South Carolina Lottery (Regional); Farm Bureau Insurance (Regional). In addition, Shannon is an alum of the Miss

Georgia Organization, an Irene Ryan Award Nominee*, and a tournament Texas Hold 'Em Poker player. Instagram: @shan_n_murphy; Representation: Xcel Talent. Sláinte!

CREATIVE TEAM

K. PARKER *She/Her* (Director) is thrilled to be back at Out Front! Previous Out Front credit: *All the Natalie Portmans*. Previous Atlanta credits: *A Shy Redemption* (SheATL), *Trading Places: The Musical* (Alliance Theatre), *How To Be a Lesbian* (Synchronicity Theatre's Stripped Bare), *Fun Home* (Actor's Express), *The Brother's Size* (Actor's Express), and *Skintight* (Actor's Express). Follow her @kparkercreates on Instagram to see what she'll do next!

TAMIEA ANDERSON *She/Her* (Production Stage Manager) is a multi-hyphenate. As a movement coach, creative director, stage manager and producer based out of Atlanta, GA, she specializes in developing projects from incubation to execution through dynamic storytelling tailored to artists' individual style and voice. Earning her Bachelor of Fine Arts at Howard University, Tamiea laid a foundation of scholarship and holistic curation by utilizing mixed media to develop productions. As a Stage Manager, her work includes *Home, I'm Darling* (Synchronicity Theatre), *BEE-LUTHER-HATCHEE* (Yellowhammer Theater), *How to Be a Lesbian* (Synchronicity Stripped Bare Series), and *A Shy Redemption* (SheATL Arts Festival) and more! Tamiea extends a warm thank you to her friends, family, and mentors for supporting her along the way.

BEATE M. CZOGALLA *She/Her* (Lighting Designer) is happy to be back at Out Front Theatre! After designing the lighting for *one In two* and *Homos, Or Everyone In America* she's excited to work on *The Gulf*. She is on the faculty of the Department of Theatre and Dance at Georgia College & State University. She has a B.A. and M.A. in Theatre from Giessen University (Germany) and an MFA

CAST & CREW BIOS (CONTINUED)

in Scenography and Lighting Design from Virginia Tech. Ms. Czogalla has designed internationally with credits in Europe, North America and the Caribbean, including dance, concert and architectural lighting design, and she works as an art director for film and television as well. She is also a Solar System Ambassador for the Jet Propulsion Laboratory/ NASA.

ALISON MAY HERGEN *She/Her* (Costume Designer) is excited for her first show as Costume Designer here at Out Front Theatre! Previous Out Front credits include Assistant Costume Designer for *The Prom*, and Costume Assistant for both *Ruthless!* and *Kinky Boots*. When not at Out Front, Alison works as a wardrobe dresser for various productions at The Fox Theatre, The Atlanta Ballet, and The Atlanta Opera or teaching art camps/classes. So much gratitude and love to her always supportive husband. Follow @alisonmayart on Instagram.

SOF DELGADO *They/Them* (Scenic Designer) is so excited to have worked on this show. Sof set designed for Out Front's last show, *At the Wake of A Dead Drag Queen*. They are currently wrapping up their Non-Profit Theatre For Youth degree at Piedmont University and hope to continue their theatrical work within the wonderful Atlanta theatre community post-graduation in May. Sof says a big thanks to Haylie and Dakota for their love and support. Follow them @sofstheatre on Instagram!

KAIT RIVAS *They/Them* (Sound Designer) is ecstatic to be working again with Out Front Theatre in *The Gulf!* Previous Out Front Theatre credits include: *one in two, Red: A Crayon's Story*, *Christmas Dearest*, *When Last We Flew*, *All the Natalie Portmans*, *The Golden Girls: The Lost Episodes - Holiday Edition*, *I Am My Own Wife*, *Spectrum Spotlight Series*, and *The Most Fabulous Story Ever Told*. Previous Atlanta credits: *Brookhaven Play* (Out of Hand Theatre), *Soar Spot* (Act for a Change), *Wolf at the End of the Block* (Theatrical Outfit), *Everyone Calls*

Her Grace (Theatre Emory), *Iphegnia in Quarantine* (Working Title Playwrights), *Pillow Talk* (Alliance Theatre Anywhere), *La Gringa* (Marietta's New Theatre in the Square). Follow them @kaitrivers on Instagram! Much love to the cast and crew and all my friends and family. Remember to always tell your story.

LILLY BAXLEY *She/Her* (Intimacy Director/ Fight Choreographer) is so excited to be working at Out Front for the first time! Lilly has spent most of her career as a Stage Manager at Atlanta theatres including the Aurora and the Shakespeare Tavern Playhouse. She now works as the full-time Production Manager at Stage Door Theatre focusing on creative outlets in her spare time including intimacy direction, set design, and scenic painting.

DALYLA NICOLE *She/They* (Dramaturg) is excited to be back at Out Front from previous dramaturgy on *At the Wake of A Dead Drag Queen* and performance in *When Last We Flew*. As an Atlanta-born and raised performer, playwright, director, dramaturg, and overall theatremaker, Dalyla can be found across Atlanta stages including previous credits including Alliance Theatre, Working Title Playwrights, 7 Stages Theatre, Essential Theatre, South Fulton Institute, Dominion Arts, Hush Harbor Lab, SheATL; nationally with Oregon Shakespeare Festival, Yellowhammer Theatre, and Workshop Theatre; and Abroad in Haiti, Holland, and Australia, Dalyla's work always returns to the love of the global community, curious compassion, and a good story. She is honored to support this vital Georgia piece!





PSYCHO BEACH PARTY

By **Charles Busch**

Chickett Forrest, a teenage tomboy, desperately wants to be part of the surf crowd on Malibu Beach in 1962. One thing getting in her way is her unfortunate tendency towards split personalities. Among them is a check out girl, an elderly radio talk show hostess, a male model named Steve and the accounting firm of Edelman and Edelman. Her most dangerous alter ego is a sexually voracious vixen named Ann Bowman who has nothing less than world domination on her mind.

MAY 2-18, 2024

Tickets: \$15+

Out Front Theatre Company
999 Brady Avenue, Atlanta



FULTON COUNTY
ARTS & CULTURE



REGIONS

Community
Foundations
for Greater Atlanta

www.OutFrontTheatre.com

INTIMATE PARTNER VIOLENCE?

61% of bisexual women and 44% of lesbian women...

in 2013 reported some type of intimate partner violence (IPV) **compared to 35% of straight women.** Intimate partner violence includes emotional/verbal abuse, physical abuse, stalking, sexual assault, and more



HELPFUL LIFE LINES



Support services and help are available. Check the QR link if you want to learn about services or to talk to someone about the violence in your life or in the life of someone you know, please call

800 Hotline
800-33-HAVEN (334-2836)

Partnership Against Domestic Violence
404-870-9600

Georgia Partnership on Domestic Violence
404-688-9436

United Way Helpline
404-614-1000 (or 211)

Challenging Gender Based Oppression
404-299-2185

Women's Resource Center
404-688-9436

LEARN + PRACTICE

"I ain't never been any other way. Mama saw it too. She would say things. I just never could figure it til that time my cousin told me I had codependence. And then I started to think on it and that's when I realized maybe she was right cuz it did seem like I had somethin' wrong with me to where I always — I dunno — needed somebody. Like the thought of being by myself was —"

Codependency



"Codependency is often defined as a pattern of unhealthy dependence on another person, explains Colleen Wenner, LMHC, MCAP, LPC, founder & director of New Heights Counseling. "This includes such traits as poor boundaries, people pleasing, and taking care of others at the expense of one's own needs. In contrast, interdependence is the healthy balance of independence and interconnection. It involves having healthy relationships with both oneself and others."

Attachment Styles

An attachment style is a specific pattern of behavior in and around relationships. It's shaped and developed in early childhood in response to relationships with someone's earliest caregivers.



Cats + Boundaries Lessons



Award-Winning Design

Done in-house and *on-budget*.

Brandon D Hunt

Materializing ideas through design.

PRINT • DIGITAL • ILLUSTRATION • BRANDING

brandondhunt.com

(888) 239-5551



CONNECT WITH US!
#OutFrontGulf

Facebook: Out Front Theatre Company

Threads: @outfronttheatre

Instagram: @outfronttheatre

Snapchat: outfronttheatre

Venmo: @outfronttheatre



Out Front Theatre Company was established to tell stories of the LGBTQIA+ (Lesbian, Gay, Bisexual, Transgender, Queer, Intergender, Asexual) experience and community, giving voice to LGBTQIA+ authors, composers, artists, and creators through the medium of theatre and the performing arts. Out Front plans to develop new works and produce classic pieces of theatre that have communicated these stories of the LGBTQIA+ population to a wider audience over time.

As a non-profit organization with a dedicated focus to better the LGBTQIA+ population, we strive to:

- **Produce** established works and premiere productions created by members of the LGBTQIA+ society,
- **Generate** productions with universal themes which are important to the LGBTQIA+ community,
- **Educate** the populous to LGBTQIA+ history,
- **Work** with local and national LGBTQIA+ organizations to bring awareness of issues facing the LGBTQIA+ to the greater Atlanta area,
- **Create** artistic and educational opportunities for at-risk LGBTQIA+ youths by collaborating with local educational institutions and organizations,
- **Expand** the number of theatrical opportunities for artists who are members of or who support the LGBTQIA+ community.

Out Front hopes to create a narrative that will reach beyond the stage, into the

conversations and minds our audiences and artists. Theatre's power as a catalyst to spur dialogues goes back thousands of years. Out Front lives to continue that grand tradition of bringing the stories of the LGBTQIA+ people into the spotlight.

LGBTQIA+ Definitions

L stands for Lesbian: Term used to describe female identified people attracted romantically, erotically, and/or emotionally to other female identified people.

G stands for Gay: Term used in some cultural settings to represent male identified people who are attracted to other male identified people in a romantic, erotic and/or emotional sense. Also, a term used to refer to the LGBTQIA+ community as a whole or as an individual identity label for anyone who does not identify as heterosexual.

B stands for Bisexual: A person emotionally, physically, and/or sexually attracted to people of more than one sex and/or gender. This attraction does not have to be equally split between genders and there may be a preference for one gender over others.

T stands for Transgender: A person who lives as a member of a gender other than that expected based on anatomical sex. Sexual orientation varies and is not dependent on gender identity. This term is sometimes used to refer to the gender variant community as a whole.



STAFF AND BOARD LIST

Out Front Theatre Company Staff

- Paul Conroy** (*He/Him*) -
Founder & Producing Artistic Director
- Precious West-Allen** (*She/Her*) -
General Manager
- Justin Kalin** (*He/Him*) -
Associate Artistic Director
- Brady Brown** (*He/Him*) - Director
of Marketing & Communications
- Robby Myles** (*He/Him*) -
Box Office Manager
- Mandy Mitchell** (*She/Her*) -
Education Director
- Sydney Lee** (*She/Her*) -
Production Manager
- Madison Grant** (*She/Her*) -
Shop Manager
- Anna Dvorak** (*She/Her*) -
Special Events Coordinator
- TJ Ruth** (*He/Him*) - Executive Assistant

Board of Directors & Officers

- Clint Clark-Duke** (*He/Him*) - Chairperson
- Blake Fountain** (*He/Him*)
- Vice Chairperson
- Jay Reynolds** (*He/Him*) - Treasurer
- Kelly Tonina Cooper** (*She/Her*)
- Secretary
- Stephen MacDonald** (*He/Him*)
- Brad Bernstein** (*He/Him*)
- Jason Feldman** (*He/Him*)
- Steven Igarashi-Ball** (*He/Him*)

Q stands for Queer: An umbrella term, which embraces a matrix of sexual preferences, orientations, and habits of the not-exclusively-heterosexual-and-monogamous majority. Queer includes lesbians, gays, bisexuals, transpeople, intersex persons, and many other sexually transgressive explorers. The term is sometimes used as a sexual orientation label instead of 'bisexual' as a way of acknowledging that there are more than two genders to be attracted to, or as a way of stating a non-heterosexual orientation without having to state who they are attracted to.

I stands for Intergender: Intergender people have a gender identity that is in the middle between the binary genders of female and male, and may be a mix of both.

A stands for Asexual: A term describing individuals who do not experience sexual attraction or do not have interest in or desire for sex. Asexuality is different from celibacy, which means abstaining from sex. Asexuality is often viewed as a spectrum - meaning there are varying levels and identities regarding someone's emotional, spiritual and romantic attraction. The best way to refer to the asexual community is to use the umbrella term "ace" or "aces" as in the "ace community," which acknowledges that spectrum.

+ stands for Many Other Identifications including, but not limited to pansexual, genderqueer, polysexual, agender, androsexual, demisexual, and skoliosexual. We strive to be as inclusive as we can and know we can always improve.

Please visit outfronttheatre.com for a more expansive list of identities, sexualities, terms, resources and more

We welcome all humans, regardless of labels, and hope we celebrate and accept everyone regardless of how they identify.

Donation Listing

Donations made between July 1, 2023 - March 5, 2024.

Out Front Theatre Company is a 501c3 non-profit organization. The health of the company depends on support from patrons just like you! All donations are 100% tax deductible and greatly appreciated! No gift is too small because it truly takes a community to make the arts thrive and grow.

We wouldn't be here without the support of the friends listed below and we would LOVE to add your name to our list of supporters! Donation information is available at the box office or at outfronttheatre.com.

THANK YOU FOR BEING A friend



DOROTHY (\$5,000+)

Anonymous (2)
Dr. Hal Brody
& Mr. Donald Smith

Jay Reynolds and Michael Barnett
Tony Conway



ROSE (\$2,500 - \$4,999)

Jackson Autry
Steve Hagen
Josh Pitre

Stonewall Sports Inc.



BLANCHE (\$1,000 - \$2,499)

Anonymous (3)
Jeffrey Allen
Mary Anne Walser

Corregan Brown
Adam Fellabaum
Jody & Michael Feldman
Warren Gump
Becky McInturff
Tom Sands
Joe Sequeria



SOPHIA (\$500 - \$999)

Anonymous
John Bowden
Lisa Boyd

Rob Dean and Rob Epstein
Craig Hardesty
Whitney Johnson
Ken Skalitzky
George Sudberry
Alison Weidner



MILES (\$100 - \$499)

Anonymous (2)
Austin Alexander
Dennis Barrett

David Bearse
Boyd Beckwith
Bojan Beganovic
John Bowden
Cynthia Cline
Leslyn Cooper Parks
Dennis Dean
Scott Evers and Al Besse
Thomas Fish
James Fortier
Bruce Garner
Edward Gaulrapp
Elyse Haber Freedman
Rusty Haber
Travis Hampton
William Hansen
Brandon Hunt
Steven Igarashi-Ball

THANK YOU FOR BEING A *friend*

Grant Knox and Brian Smith
Michael Marolla
Elizabeth Medin
Melissa Miller
Jamal Mohammad
Sean O'Keefe
Jeffrey Rakofsky
Harrison & Ava Reeves
Ryan Rodriguez
Richard Shivers
Ken Skalitzky
Katie Smith
Robin Swett Newberg
Jonathan Throop
Richard Vitaris
Evan Walker
Robert Wayne
Emily William Jordan
Paris William
Barbara Woodlon
Howed Yorek



STAN (\$1 - \$99)

Anonymous
(89)
Maria Adams

Samuel Alexander
Jeremy Allan
Leah Anderson
Aaron Andrew Harris
Jason Arnold
Kimberly Asher
Mandy Ayers
Susan Baker and Nancy Strauch
Denise Barrett
Dennis Barrett
Dave Bearse and Clinton Patters
Ryan Bee
Jana Benhardt
George Bergmark
Robert Borders
Majorie Breiding
Steven Brewer
Mitch Brown
Candace Brown
William Byrne
Christine Carroll
Michael Caster

Toldeo Celenia
Terry Chongulia
Melanie Clark
John Clark-Duke
Will Cole
Andrew Cuomo
Thomas Dapogny
Grace Davenport
Maryrose DeGroot
Cynthia DeVille & Andrea Baker
Joe and Jeff Donovan
Paige Drye
Amanda Ellenburg
Ian Evatt
James Faust
Louis Fuerstman
Lous Fuestman
Patrick Garver
Lindsay Gawron
Corinne Graffunder
Jodi Greenwald
Edith Guyton
Rusty Haber
Mark Hamlin
Jesse Hancock
Amanda Harris
Natalie Hazen
Joshua Hecht
Charles Hiromoto
Matt Hoffman
Cathy Hollbrook
Sarah Holliday
Daniel Hollifield
David Holmes and John Rowell
Mitchell Ivers
Alyssa James
Alyssa James
Quintara Johnson
Tanya Johnson
Brad Kasier
Carrie Kendrick
Njai Kenon
Caroline King
Amy King
Elizabeth Kirkhope
Austin Kunis
Glen L. Frankel
Brandon Laws
Dominic Lawson
Wendy Layne
Elaine Lee

Dustin Lewis
Ivette Lopez
Joshua Lorenz
Femmaeve MacQueen
John Maddox
Jill Martin
Emily Maynard
Deanna McCoy
Amber McDermott
Wendy Melkonian
Jamal Mohammad
Justin Moua
Terence Ng
Joseph Normandin
Leonard Pallats
Kyle Patterson
Andrew Pereira
Megan Poole
Tamara Powell
Joy Purcell
Brian Purchner
Lawrence Rathburn
Andrea Rattray
Aysha Razavi
Doyle Reynolds
Timothy Reynolds
Mark and Jill Rosenberg
David Rossetti
Cortland Russell
Ian Sawan
William Seright
David Silverstein
Matthew Smith
Caroline Stead
John Stegall
Nicole Stein
Aubrie T. Goodson
Duncan Teague
Celenia Toledo
James Triplett
Juan Unzueta
Wayne van Halem
Marietta Walsh
Clark Weisner
Stephen Wells
David Welniak and Scott Sykes
Keli Whitnell
Madison Wickline
Tara Winston
Shannon Yasser
Janelle Zabresky

RUBY REDD'S

BIRDCAGE



MARCH 20 & 27 AT 8PM



BENEFITING



LOCATION



1492 Piedmont Ave NE, Atlanta, GA 30309



APRIL 19



AN EVENING WITH
TITUSS BURGESS



ATLANTA GAY MEN'S CHORUS

presents



TRANSformation

SATURDAY, APRIL 6, 2024 @ 7:30PM

City Springs Byers Theatre

1 Galambos Way, Sandy Springs, GA 30328

Donald Milton III
Artistic Director

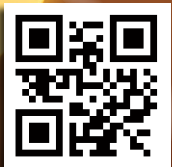
VIP: \$75.00

General Admission: \$45.00

Seniors/Veterans: \$35.00

Students: \$20.00

VOICES
OF NOTE



Tickets and more at:
voicesofnote.org



ATLANTA
GAY MEN'S
CHORUS

ENGEL&VÖLKERS®



Unlock Your Real Estate Dreams with a Purpose: Supporting Out Front Theatre Together

Join me in supporting Out Front Theatre as we work together to fulfill your real estate aspirations! I'm committed to donating **20% of my commission** to Out Front Theatre in your name. Simply let me know you were referred by them. Feel free to reach out to me via call, text, or email any time.



Adam Parker | Your Local REALTOR®
1745 Peachtree Street, Suite T | Atlanta | GA 30309
M 404-849-9829 | O 404-845-7724
adam@evatlanta.com | adamparker.com

Keeping the Focus on You



Whether your goals include retirement, education or a major purchase – such as a second home – we always begin with what’s most important to *you*.

Let's Talk



678.871.2222

www.ElementWealthAdvisors.com



SHOP OUR ONLINE STORE!



Get all your Out Front merch
only at OutFrontTheatre.com/shop

- ✓ TShirts
- ✓ Hoodies
- ✓ Crop Tops
- ✓ Leggings
- ✓ And more!

