

GEORGIA PREMIERE!



oneintwo

By Donja R. Love • Directed by J.L. Reed



Sponsored by



POSITIVE IMPACT
HEALTH CENTERS

CHAMBLEE • DECATUR • DULUTH • MARIETTA

MARCH 16 - APRIL 1, 2023

#outfrontoneinttwo

www.OutFrontTheatre.com

A Note from Paul



Friends,

The term “The Next Great American Play” has been thrown around for almost a century now, but it’s a designation that, at times, may be thrown around a bit too liberally. Some plays are truly “The Next Great American Play,” and I believe you are here today and will witness one of those plays.

In the final days of 2019 (that magical period we now know as “the before times”), I was privileged to see the premiere of *one in two* in New York City as the final show on my last trip before the COVID-19 pandemic began. Returning to Atlanta, I knew that this was a story that needed to be told in our city; a city and region that continue to be throttled by HIV at an alarming rate. To me, this was The Next Great American Play, because it felt almost frighteningly relevant. It felt fresh and raw with a voice that isn’t put on stage nearly enough. It is both “now” and “here”. It demands attention; to quote another Great American Play, “So attention must be paid.” This play deals with a subject that is not easy, but life is not always easy. To me, we shouldn’t turn a blind eye to what is hard. We **MUST** pay attention, not just to the play but to the world it is talking about. After all, it is the world we live in.

Time and time again you join us here to be a part of the stories we put on stage. Thank you. My promise to all of you is that we will continue to dare and divert your senses with every show we produce, but I am going to ask a promise of you in return; continue with us for this ever-evolving journey we are on. For every moment you see on our stage, remember that “attention must be paid.” And who knows, you may see The Next Great American Play here on any given day. Today might be that day.

As Always,

Paul Conroy

Founder & Producing Artistic Director
Out Front Theatre Company



PrEP



Your **CAST**
of **PrEP**
OPTIONS
is **changing**



Learn more at
RethinkPrEP.com



POSITIVE **IMPACT** HEALTH CENTERS

Low cost or no cost

PrEP

PrEP is a daily pill that is
99% effective against HIV.

For more information, call one of our nurse
lines or visit positiveimpacthealthcenters.org.

DECATUR

523 Church St.
404.589.9040

DULUTH

3350 Breckinridge Blvd.,
Ste 200
770.962.8396



Presents

oneintwo

WRITTEN BY

Donja R. Love

STARRING

Patrick Hamilton, Michael Ward, Robert King Jr., Nicholas Ramsay

DIRECTOR

J.L. Reed

ASSISTANT DIRECTOR & PROJECTION DESIGNER

Robby Myles

PRODUCTION STAGE MANAGER

Janine Myers

ASSISTANT TO THE DIRECTOR

Hanna Ricci-Westcott

LIGHTING DESIGNER

Beate M. Czogalla

COSTUME DESIGNER

Jordan Hermitt

SCENIC DESIGNER

Paul Conroy

SOUND DESIGNER

Kait Rivas

PROPS DESIGNER

Madison Grant

DRAMATURG

Jess Ellison

INTIMACY DIRECTOR

Mandy Mitchell

The videotaping or other video or audio recording of this production is strictly prohibited.



This program is supported in part by Georgia Council for the Arts through the appropriations of the Georgia General Assembly. Georgia Council for the Arts also receives support from its partner agency - the National Endowment for the Arts. This program is supported in part by the City of Atlanta Mayor's Office of Cultural Affairs. Funding for this program is provided by the Fulton County Board of Commissioners.



Presents

oneintwo



TIME: Now, until

PLACE: Nowhere, everywhere (or, a waiting room)

This production is performed without an intermission.

Cast & Crew

CAST

Person on the LeftPatrick Hamilton
Person in the Middle.....Michael Ward
Person on the Right Robert King Jr.
Understudy Nicholas Ramsay

PRODUCTION CREW

Director J.L. Reed
Assistant Director
& Projection Designer Robby Myles
Production Stage Manager.....Janine Myers
Assistant to
the Director.....Hannah Ricci-Westcott
Lighting Designer Beate M. Czogalla
Costume Designer.....Jordan Hermitt
Scenic DesignerPaul Conroy
Sound Designer Kait Rivas

Props Designer.....Madison Grant
Dramaturg..... Jess Ellison
Intimacy Director..... Mandy Mitchell
Lighting Assistants Eric Burleson,
Shalom Thomas
Costume Assistant Shaili Sanikapally,
Micah Beasley
Scenic AssistantsGeorgia Waters,
Laura Funk, TaNi Evans
Props Assistants.....Charlotte Edwards,
Clo Cooper
Dramaturg Assistants.... Jada Bates-Robinson,
Otis McDaniel
PhotographerSydney Lee
Videographer Saturnblu Productions
Public Relations.....JMF Communications
Graphic Designer..... Brandon D Hunt

THANK YOU TO OUR

COMMUNITY PARTNERS



Canzara Szn
from the House of Alexandr

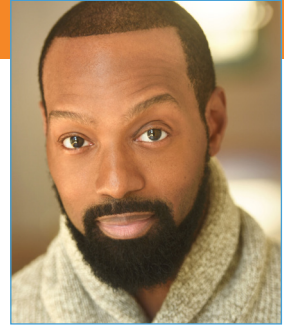


KENNY LEON'S

true colors

THEATRE COMPANY

Director's Note



Sometime during the fall of last year, I was discussing future artistic endeavors with an acquaintance. I mentioned some performance opportunities I was looking forward to, but acknowledged that I was most eager to dive into rehearsals for *one in two*. The acquaintance hadn't heard of the play, so I gave them an overview. Afterwards, they remarked, "It's a good thing *that* (HIV) isn't a big issue anymore." I was initially slighted by the remark and found myself becoming defensive of Donja and his story. By the time of this encounter, I had begun the work of pouring over the play in preparation for rehearsals, so I was feeling especially protective as the two of us bumped heads over the remark.

When I reflected a day or so later on my conversation with the acquaintance, I was a bit more understanding of their sentiment—however inartful it was expressed. I recognized though, more than anything, the resounding importance of Donja's play despite advancements in HIV treatment, particularly since the playwright's own diagnosis over ten years ago.

Regardless of those strides, I can't fully accept the sentiment that HIV "isn't a big issue anymore." There's still stigma and shame that often comes along with an HIV diagnosis. It's one of the reasons *one in two* is just as important now as it was when Donja took to his phone's notes app to write the first draft of the play. There is stigma and shame even within the Black LGBTQIA community. On Twitter, in just the past month, for example, there were ignorant and harmful tweets circulating related to the topic of dating someone who is HIV positive.

Those vitriolic tweets, posted by a Black gay man, sought to breed stigma and shame that keeps stories like Donja's hidden away—due, in part, to the fear that comes with sharing one's truth. But as our playwright declared when he chose to make this play public, "Fear can no longer overshadow truth." And because of Donja's courage to tell his, this play serves as a call to action. After seeing this work, I hope you will respond to the call loudly and courageously.

J.L. Reed

Director, *one in two*

COMMITMENTS & VALUES

MISSION

Out Front Theatre Company's mission is to tell LGBTQIA+ (Lesbian, Gay, Bisexual, Transgender, Queer, Questioning, Intergender, Asexual) stories.

VISION

Out Front Theatre Company's vision is to strengthen the LGBTQIA+ community in Georgia by exploring and celebrating the universal human experience through the lens of gender and sexuality.

EQUALITY, DIVERSITY, & INCLUSION COMMITMENT

The staff and board of Out Front Theatre Company want to put the following metrics in place so that we can track them to completion. We want our stakeholders and our patrons to see real results.

- We want to have representative board members from black and brown communities, as well as gender nonconforming representatives and increase that representation by at least 10% every year until we reach a goal of above 50%.
- We want to produce, support, or promote at least 2 shows/events from creatives of color every year and increase that number by at least 20% every year.
- We want to increase our presence in communities of color and in women's communities through intentional outreach. We can do this by creating a communication strategy to expand our patronage. To that end, we will recruit a community outreach intern or staff member to help achieve this goal.
- We want to increase our intersectional involvement by partnering with other socially progressive nonprofit organizations to collaborate on community events. The goal is to have at least one partner event per year with an ultimate goal of three per year.

Please visit
www.OutFrontTheatre.com
to learn more.



LAND ACKNOWLEDGMENT

We are gathered on the unceded land of the Mvskoke (Muscogee/Creek) peoples. We ask you to join us in acknowledging the Mvskoke community, their elders both past and present, as well as future generations. Out Front Theatre Company also acknowledges that it was founded upon exclusions and erasures of many Indigenous peoples, including those on whose land this institution is located.

This acknowledgment demonstrates a commitment to beginning the process of working to dismantle the ongoing legacies of settler colonialism.



THE MUSCOGEE NATION

**For more information on this nation,
as well as how to support to them,
please visit www.muscogeenation.com**



The
STAGE MOTHER
of All Musicals

A stylized illustration of a character's face, likely Pippi Longstocking, with red hair in pigtails tied with blue bows. The character has a determined, slightly angry expression. The illustration is set against a green background with a pattern of small red dots.

RUTHLESS!
THE MUSICAL

Book & Lyrics by Joel Paley
Music by Marvin Laird

Eight-year-old Tina Denmark knows she was born to play Pippi Longstocking, and she will do anything to win the part in her school musical. "Anything" includes murdering the leading lady!



Georgia State
University

Co-Production with

MAY 4-20, 2023

Tickets: \$25 and up
Out Front Theatre Company
999 Brady Avenue, Atlanta



www.OutFrontTheatre.com

CAST & CREW BIOS

CAST

PATRICK HAMILTON *He/They* (Person on the Left) is so excited to be making his Out Front Theatre Debut! As a 2022 Graduate of the Chadwick A. Boseman College of Fine Arts, BFA Musical Theatre department, Atlanta was the perfect place for Patrick to begin spreading his wings. Previous Atlanta Credits include: *Jukebox Giants* (The Strand Theatre), *Dead Man's Party* (the Crystal Pistol), *Reboot* (Rispa). Other Regional and Educational credits include: *Death and the King's Horseman* (Shakespeare Theatre Company), *Pippin* (Howard University). He would like to thank God, his family, and friends for the love, grace, and support that they continue to provide! You can follow him on Instagram @theeroshad!

ROBERT KING JR. *He/Him* (Person on the Right) is thrilled to be making his Atlanta debut with Out Front Theatre! Robert is an Austin, Texas native. Credits include Hoke in *Driving Ms. Daisy* (The App Theatre), (Spectrum Theatre Company) Papa Ge in *Once On This Island*, MLK in *For the Love of Mahalia*, Jelly in *Spunk*, Donny in *The Voices of Donny Hathaway* (Ground Floor Theatre), Mister in *The Color Purple Musical* (Vive Les Arts), Audrey II/Voice in *Little Shop of Horrors* and Buck O Neil in *Satchell Paige & The Kansas City Swing* (Austin Playhouse). Outside of acting Robert is a published playwright, singer/songwriter, and producer. Robert would like to thank his family and friends for all of their continued support and his fiancé John for believing in him!

MICHAEL WARD *He/Him* (Person in the Middle) is excited to pop his Out Front cherry with this lllifechanging production. Out Front Theatre: Debut. Select Atlanta

credits: *Crossroads* (Actor's Express), *Holiday Break* (Barefoot Playhouse), *Lines* (Atlanta Black Theatre Festival). Regional: *Heartbeats, 2:30 Hookup* (African-American Collective Theatre), *Fences* (Stage Aurora). When he's not on stage, he's hosting, doing voice overs, and being BLACK, GAY, stuck at home on Friday nights. Follow him on all the things @michaelxward www.michaelxward.com

NICHOLAS RAMSAY *He/Him* (Understudy) is thrilled to be making his Out Front Theatre debut! Previous Atlanta credits include Elegba in *In The Red and Brown Water* (Marietta's New Theatre in the Square); Kaiser in *The Mandela Saga* (Porter Sanford Performing Arts Center) and Cassius in *Julius Caesar* (Georgia State University). Outside of acting, he loves to spend time with family and friends and enjoys traveling. He's been to over 10 countries and looks forward to adding to the list. Feel free to follow his journey @iamnickramsay on Instagram.

PRODUCTION CREW

J.L. REED *He/Him* (Director) is honored to serve as director for another Out Front production. He previously directed *When Last We Flew* this time a year ago. In addition to directing, J.L. acts and writes. He received his M.F.A. in Theatre Performance from the University of Georgia, and will graduate, in May, from Point Park University's M.F.A. Writing for the Screen & Stage program. J.L. is grateful to be an artist, and is eager to develop and tell more stories on the stage and screen that center Black queer characters.

CAST & CREW BIOS (CONTINUED)

ROBBY MYLES *He/Him* (Assistant Director & Projection Designer) is ecstatic to be working on this production as the Assistant Director and Projection Designer. Previous Out Front Theatre productions include *Xanadu*, *Christmas Dearest*, and *The Santa Closet*. Robby thanks his family and friends for supporting his artistic journey in this thing called life. You can find Robby on all social media platforms at @robbymyles

JANINE MYERS *They/Them* (Production Stage Manager) Out Front: *Red: A Crayon's Musical*, *The Most Fabulous Story Ever Told*, *All The Natalie Portmans*, *When Last We Flew*. Atlanta: *A Very Sordid Wedding* (On Stage/Process Theatre), *A Year With Frog & Toad* (Smyrna Players), *A Funny Thing Happened On The Way To The Forum* (Center Stage North), *The Secret Garden* (Front Porch Players), *The Rose Tattoo* (GSU Players). Education: B.I.S from Georgia State University. Other: KCACTF Nominee. Special Thanks to the family, friends, and colleagues who help to keep me sane, grounded, encouraged, and remind me to hydrate.

HANNAH RICCI-WESTCOTT *She/Her* (Assistant to the Director) is a GSU Theatre Arts Admin major and has been involved with Out Front Theatre since 2020. Along with directing, she enjoys theatre education, design, and stage acting. In her spare time, Hannah likes to read, travel, and experience live performance.

BEATE M. CZOGALLA *She/Her* (Lighting Designer) is happy to be back at Out Front Theatre! She is on the faculty of the Department of Theatre and Dance at Georgia College & State University. She has a B.A. and M.A. in Theatre from Giessen University (Germany) and an MFA

in Scenography and Lighting Design from Virginia Tech. Ms. Czogalla has designed internationally with credits in Europe, North America and the Caribbean, including dance, concert and architectural lighting design, and she works as an art director for film and television as well. She is also a Solar System Ambassador for the Jet Propulsion Laboratory/ NASA.

JORDAN HERMITT *She/Her* (Costume Designer) After graduating from Wesleyan College with a degree in Theatre and Studio Art she's been freelancing as a designer ever since working on shows such as costuming *Black Nerd* (GGC), *Ordinary Days* (GGC), *Inferior Sex* (Hangar Theatre), *Song & Dance* (Aurora Theatre), *The Bluest Eye & Aubergine* (Theatre Works Colorado Springs). She's excited to be working on *one in two* with Out Front Theatre for the first time!

PAUL CONROY *He/Him* (Set Designer) is the Founder and Producing Artistic Director of Out Front Theatre Company, Georgia's LGBTQIA+ focused theatre company. Originally from the Boston area, he holds a BA in English/Writing with a Minor in Theatre from Long Island University in addition to both a MA in Directing from Roosevelt University and a MFA in Directing from the University of Idaho, and as a playwright his original musical, *The Ethel Merman Disco Christmas Spectacular!* (which he also directed) made its World Premiere at Out Front in December of 2018. Other select directing credits at Out Front include *Priscilla, Queen of the Desert: The Musical*, *The Most Fabulous Story Ever Told*, *The View UpStairs*, *La Cage aux Folles*, *Xanadu* and most recently the smash hit *Kinky Boots*. Paul teaches courses in Theatre at Georgia State University, sits on Historic

CAST & CREW BIOS (CONTINUED)

Atlanta's LGBTQ Historic Preservation Advisory Committee, the Board of Directors of OUT Georgia and recently entered his sixth-year term as a founding member of the City of Atlanta's LGBTQ+ Advisory Board for which he co-chairs the Arts, Culture and Entertainment subcommittee. He was named one of Georgia's 100 Most Influential LGBTQ+ people in 2020 and has been featured in The New York Times, The Times of London and numerous other media outlets speaking about the importance of queer centered arts. Paul is also the co-founder of the Queer Theatre Alliance, a national coalition of LGBTQ+ centered theatre companies.

KAIT RIVAS *They/Them* (Sound Designer) is ecstatic to be working again with Out Front Theatre in this wonderful and important production of one in two! Previous Out Front Theatre credits include: *Red: A Crayon's Musical*, *Christmas Dearest*, *When Last We Flew*, *All the Natalie Portmans*, *The Golden Girls: The Lost Episodes - Holiday Edition*, *I Am My Own Wife*, *Spectrum Spotlight Series*, and *The Most Fabulous Story Ever Told*. Previous Atlanta credits: *Soar Spot* (Act for a Change), *Wolf at the End of the Block* (Theatrical Outfit), *Everyone Calls Her Grace* (Theatre Emory), *Iphegnia in Quarantine* (Working Title Playwrights), *Pillow Talk* (Alliance Theatre Anywhere), *La Gringa* (Marietta's New Theatre in the Square), *Entertaining Lesbians*, *Working the Musical*, and *Evil Dead the Musical* (Out of Box Theatre). Follow them @kaitrivers on Instagram! Much love to the cast and crew and all my friends and family. Remember to always tell your story.

MADISON GRANT *She/Her* (Props Designer) is excited to be working on another Out Front Production! Previous Out Front Theatre credits include *Xanadu* (co-production with Georgia State University), *When Last We Flew*, *Homos or Everyone in America*, and *Christmas Dearest*. Atlanta Credits Include *Food Justice* (Georgia State University Give back series). Much Love to all my fans for the Love! Follow her @madi_xcreate on Instagram.

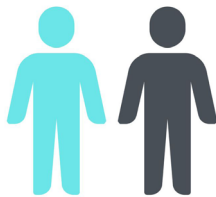
JESSICA ELAINE ELLISON *They/She* (Dramaturg) is a Houston-based dramaturg and theatre artist. Recent dramaturgy credits include: *Romeo + Juliet* (The Acting Company); *Sweat* (Alley Theatre); *Broadbend*, *Arkansas* and *No. 6* (The Studio Theatre Tierra Del Sol); *You're Cordially Invited to Sit-in* (Stages); *Sense and Sensibility* (The College of William and Mary); and *What We're Up Against*, *In the Blood*, *The Oresteia*, and *Silence* (University of Houston). You can find Jessica on Instagram @jess.elainee or online at www.jeedramaturgy.com.

MANDY MITCHELL *She/Her* (Intimacy Director) is an energetic, creative and ardent teaching artist, director and performer. Mandy holds a Master of Fine Arts degree in Acting/Directing from The Ohio State University, where she focused on the creation of new works and integration of new media. She has worked with the RSC, The Abbey Theatre of Dublin, The SITI Group, The Alliance Theatre and The Center for Puppetry Arts. Credits include *Richard II*, *Chekov's Kardashian Sisters*, *Head Over Heels* and *The Legend of Georgia McBride*. Mandy is the Director of Education here at Out Front and is hoping to share more work with you in seasons to come.

The Reality of One in Two

by Jessica Elaine Ellison

Donja R. Love based *one in two* on a statistic from a 2016 study by the Centers for Disease Control and Prevention (CDC) that states: "If current HIV diagnoses rates persist, about 1 in 2 black men who have sex with men (MSM) and 1 in 4 Latino MSM in the United States will be diagnosed with HIV during their lifetime." The findings from this 2016 study revealed that gay and bisexual men were, and continue to be, the most affected group of the HIV crisis. African Americans were also the most affected racial group overall, with 1 in 20 African American men living with HIV and 1 in 48 African American women living with HIV. The HIV crisis also proves to be a regional one in the United States, with people in the South more likely to be diagnosed than other Americans.



According to the CDC, 1 in 2 black gay men
will be diagnosed with HIV during their
lifetime.

As of October 2022, approximately 1.2 million people in the United States have HIV—although an estimated 13% are in need of testing and do not know that they have it. HIV continues to have a disproportionate impact on racial and ethnic minorities and those living in southern states.

The COVID-pandemic sparked renewed public interest in HIV prevention, testing, and care and organizations targeting the most impacted groups received more funding and public attention. This led to a 7% decrease in HIV-positive diagnoses



People in southern states are more likely to be diagnosed with HIV than any other region in the United States.

from 2019 to 2020. While there have been black and minority-led organizations that focus on HIV care for those specific communities since the onset of the HIV/AIDS epidemic, the work of these organizations is currently being highlighted in the public arena more than ever before.

Fortunately, and in contrast to when the HIV/AIDS epidemic first began, a positive HIV diagnosis is no longer a death sentence with proper treatment and care. However, without HIV medication and treatment, people who go on to develop AIDS typically survive about 3 years. This expectancy drops to 1 year if someone develops an opportunistic illness and does not receive treatment. If someone does go on to develop AIDS, HIV treatment could potentially work, though it is not guaranteed.

Access to proper HIV education and treatment can often be a barrier for those most at risk of HIV infection. The work of community organizations can help promote a deeper understanding of HIV and AIDS and help break the stigma surrounding the illness. Shows like this, that show people living and surviving with HIV can not only help break the stigma, but can also provide hope and community to those who need it most.



Pop Culture T-Shirts and so much more...

www.hottea.co



CONNECT WITH US!
#outfronttheatre

Facebook: Out Front Theatre Company
Twitter: @outfronttheatre
Instagram: @outfronttheatre
Snapchat: outfronttheatre
Venmo: @outfronttheatre
#outfrontoneintwo



WHO WE ARE

Out Front Theatre Company was established to tell stories of the LGBTQIA+ (Lesbian, Gay, Bisexual, Transgender, Queer, Intergender, Asexual) experience and community, giving voice to LGBTQIA+ authors, composers, artists, and creators through the medium of theatre and the performing arts. Out Front plans to develop new works and produce classic pieces of theatre that have communicated these stories of the LGBTQIA+ population to a wider audience over time.

As a non-profit organization with a dedicated focus to better the LGBTQIA+ population, we strive to:

- **Produce** established works and premiere productions created by members of the LGBTQIA+ society,
- **Generate** productions with universal themes which are important to the LGBTQIA+ community,
- **Educate** the populous to LGBTQIA+ history,
- **Work** with local and national LGBTQIA+ organizations to bring awareness of issues facing the LGBTQIA+ to the greater Atlanta area,
- **Create** artistic and educational opportunities for at-risk LGBTQIA+ youths by collaborating with local educational institutions and organizations,
- **Expand** the number of theatrical opportunities for artists who are members of or who support the LGBTQIA+ community.

Out Front hopes to create a narrative that will reach beyond the stage, into the

conversations and minds our audiences and artists. Theatre's power as a catalyst to spur dialogues goes back thousands of years. Out Front lives to continue that grand tradition of bringing the stories of the LGBTQIA+ people into the spotlight.

LGBTQIA+ Definitions

L stands for Lesbian: Term used to describe female identified people attracted romantically, erotically, and/or emotionally to other female identified people.

G stands for Gay: Term used in some cultural settings to represent male identified people who are attracted to other male identified people in a romantic, erotic and/or emotional sense. Also, a term used to refer to the LGBTQIA+ community as a whole or as an individual identity label for anyone who does not identify as heterosexual.

B stands for Bisexual: A person emotionally, physically, and/or sexually attracted to people of more than one sex and/or gender. This attraction does not have to be equally split between genders and there may be a preference for one gender over others.

T stands for Transgender: A person who lives as a member of a gender other than that expected based on anatomical sex. Sexual orientation varies and is not dependent on gender identity. This term is sometimes used to refer to the gender variant community as a whole.

Q stands for Queer: An umbrella term, which embraces a matrix of sexual preferences, orientations, and habits of the not-exclusively-heterosexual-and-monogamous majority. Queer includes lesbians, gays, bisexuals, transpeople, intersex persons, and many other sexually transgressive explorers. The term is sometimes used as a sexual orientation label instead of 'bisexual' as a way of acknowledging that there are more than two genders to be attracted to, or as a way of stating a non-heterosexual orientation without having to state who they are attracted to.

I stands for Intergender: Intergender people have a gender identity that is in the middle between the binary genders of female and male, and may be a mix of both.

A stands for Asexual: A term describing individuals who do not experience sexual attraction or do not have interest in or desire for sex. Asexuality is different from celibacy, which means abstaining from sex. Asexuality is often viewed as a spectrum – meaning there are varying levels and identities regarding someone's emotional, spiritual and romantic attraction. The best way to refer to the asexual community is to use the umbrella term "ace" or "aces" as in the "ace community," which acknowledges that spectrum.

+ stands for Many Other Identifications including, but not limited to pansexual, genderqueer, polysexual, agender, androsexual, demisexual, and skoliosexual. We strive to be as inclusive as we can and know we can always improve.

Please visit outfronttheatre.com for a more expansive list of identities, sexualities, terms, resources and more

We welcome all humans, regardless of labels, and hope we celebrate and accept everyone regardless of how they identify.



STAFF AND BOARD LIST

Out Front Theatre Company Staff

- Paul Conroy** (*He/Him*) -
Founder & Producing Artistic Director
- Precious West-Allen** (*She/Her*) -
General Manager
- Justin Kalin** (*He/Him*) -
Associate Artistic Director
- Brady Brown** (*He/Him*) - Director
of Marketing & Communications
- Robby Myles** (*He/Him*) -
Box Office Manager
- Mandy Mitchell** (*She/Her*) -
Education Director
- Sydney Lee** (*She/Her*) -
Production Manager
- Madison Grant** (*She/Her*) -
Shop Manager
- Anna Dvorak** (*She/Her*) -
Special Events Coordinator

Board of Directors & Officers

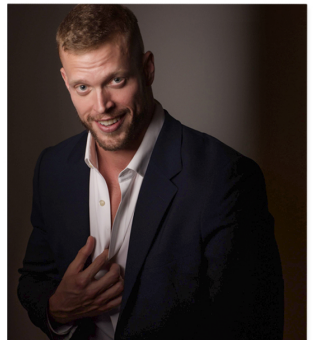
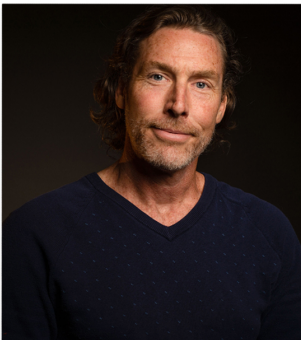
- Clint Clark-Duke** (*He/Him*) - Chairperson
- Blake Fountain** (*He/Him*)
- Vice Chairperson
- Jay Reynolds** (*He/Him*) - Treasurer
- Kelly Tonina Cooper** (*She/Her*)
- Secretary
- Sandy Mollett** (*She/Her*)
- Dr. Jesse Peel** (*He/Him*)
- Stephen MacDonald** (*He/Him*)
- Brad Bernstein** (*He/Him*)
- Jason Feldman** (*He/Him*)
- Steven Igarashi-Ball** (*He/Him*)
- Evan Robert Brown Walker** (*He/Him*)



CONGRATULATIONS
ON SEASON 6,
OUT FRONT
THEATRE!



Tyler Ogburn
PHOTOGRAPHY





Dr. Farah Kar DDS, MS, MSc

Double Board-Certified Orthodontist

GET YOUR
COMPLIMENTARY CONSULTATION

Please text to schedule: (859) 538-6135

1111 Johnson Ferry Rd.
Marietta, GA 30062



WILLOW
ORTHODONTICS

Exceptional orthodontic care
for children and adults!

We are so excited to announce
that Dr. Kar's clinics will be
transitioning to a new name!

Willow Orthodontics

Blooming this
Spring/Summer 2023



Follow Dr. Kar
on Instagram!



The Triangle Cabaret at Out Front Theatre Company will expand and explore art forms and elevate artists with a cornucopia of community events and performances that strengthen Out Front's mission as Georgia's only LGBTQIA+ theatre.

Visit www.OutFrontTheatre.com/The-Triangle-Cabaret to learn more.

HIV/AIDS Advocacy Resources

Georgia CAPUS is a one-stop information source for all things HIV/AIDS within the state of Georgia.

Communities Advocating Emergency AIDS Relief (CAEAR) is the oldest national organization with a primary focus on the Ryan White HIV/AIDS Treatment Program.

GMHC is the world's first and leading provider of HIV/AIDS prevention, care and advocacy and fights to end the AIDS epidemic and uplift the lives of all affected.

National Alliance of State and Territorial AIDS Directors (NASTAD) is a leading non-partisan non-profit association that represents public health officials who administer HIV and hepatitis programs in the U.S. and around the world.

HIV Prevention Justice's goals are to develop and implement National Organizing and Policy Strategies that systemically reduce factors that drive HIV epidemic and health inequities.

The Social Security and Disability Resource Center is an informational website that provides answers to questions about how to apply for disability, how to appeal a claim in the event of a denial, how to navigate the federal system, and how to avoid certain mistakes that are commonly made by applicants. They have information specific to HIV/AIDS.

Elton John AIDS Foundation was established in 1992 and is one of the leading independent AIDS organisations in the world. The Foundation's mission is simple: to be a powerful force in the end to the AIDS epidemic.

Positive Impact Health Centers' mission is to provide client-centered care for the HIV community to have a life worth loving. Comprehensive services are available at the Duluth, Decatur and Marietta Centers for those individuals living with HIV. Grant funding enables most services to be provided on a sliding fee basis.

For a full list of LGBTQIA+ resources,
please visit www.OutFrontTheatre.com/Resource-List

Donation Listing

Donations made between July 1, 2022 - January 25, 2023..

Out Front Theatre Company is a 501c3 non-profit organization. The health of the company depends on support from patrons just like you! All donations are 100% tax deductible and greatly appreciated! No gift is too small because it truly takes a community to make the arts thrive and grow.

We wouldn't be here without the support of the friends listed below and we would LOVE to add your name to our list of supporters! Donation information is available at the box office or at outfronttheatre.com.

THANK YOU FOR BEING A

friend



DOROTHY (\$5,000+)

Anonymous
Courtney Lee

Dr. Hal Brody & Mr. Donald Smith

Dr. Jesse Peel

Jay Reynolds & Michael Barnett

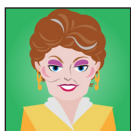
Positive Impact Health Centers

ViV Healthcare



ROSE (\$2,500 - \$4,999)

Anonymous



BLANCHE (\$1,000 - \$2,499)

Billy Chiou
Casey Brown

Chris Cooper

Joseph Sequeira

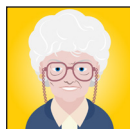
Josh Pitre

Keith Whitson

Kevin & Rebecca McInturff

Rob Dean

Troy Meyers and Benji Dove



SOPHIA (\$500 - \$999)

Brandon and Scott Hunt
Craig Hardesty

David Starr

David Wilson and Jacob Bush

Joseph Davidson

Keely Herrick

Kirstin Popper

Lisa Boyd

Thurman Williams

Victoria Bunce

Wade Jones

Whitney Johnson



MILES (\$100 - \$499)

Bill and Michael Cyr-Royal
Bill Com

Blake Smith

Boyd Beckwith

Bruce Garner

Christopher Harris

Christopher Russel

Clint Clark-Duke

Courtney Bowen

David Gacko

David Prophitt

Deanna Dennis

Diane Haymes

Diane Versaggi

Don Deyo

Ed Welsh

Edwin Page

Eric Wright

Evan Walker
Fruit Wine Productions
Gusto! on Ponce
Howard Yorek
James Dustin
Jennifer Dorrell
Joseph Austin
Joseph Woodruff
Judy Kimball
Katherine Williams
Katie Smith
Lee Osorio
Mark Wohlin
Marykay Mentzer
McCree O'Kelley
Melissa Miller
Michael Schleifer
Precious West-Allen
Richard Vitaris
Ritchie Crownfield
Stacey Hill
Stephanie Cone
Terry Bird
Tim Stoltenberg
Tom Sands
Tony Purvis
William Dickinson
William Paris



STAN
(\$1 - \$99)

Alqurin Wright
Akini Morris

Anastasia Cheplyansky
Andrea Barra
Anna Hiott
Ashley Sedmak
Austin Kunis
Beate Czogalla
Carmen Juggassar
Chad Janowiak
Danielle Quesenberry
Deandra West
Drew Fillingier
Eddie Valdivia
Edward Gaulrapp
Elizabeth Hirsch-Tauber
Elizabeth Puckerin
Ella Welke

Ellie Clark
Eric Griffiths
Galen Crawley
George Sudberry
Hannah Craton
Harold Horwitz
Hayley Lovitt
Inez Joiner
Jason Beagle
Jason Reeves
Jim Huiner
Kath Fidler
Kristin Dillon
Lakisha Bouchereau
Leonard Pallats
Lucas Wvans
Mandy Dobbins
Marie Blome
Maxine Sims
Michael Shutt
Natalie Jones
Njai Kenon
Nicole Grzymala
Nora Lewis
Patrick Hill
Paul Fulton
Pierre Bush
Randy D Adler
Raymond Barnes
Reginald Slaughter
Rennison Borges
Richard Blackburn
Richard Goodjojn
Rick Alexander
Rob Borders
Robin Swett Newberg
Royce Collins
Sara Ayres
Sarah Taphom
Siomara Rodriguez
Sisney Hollwager
Stan Pollard
Stephanie Cane
Stephanie Ospina
Tara Sweeney
Taylor Baugh
Timothy Royer
Tom Slovak
Travis Brookshire
Victor Provencio
Vincent Donroe-Wells
Zachary Tate





SHOP OUR ONLINE STORE!



Get all your Out Front merch
only at OutFrontTheatre.com/shop

- ✓ TShirts
- ✓ Hoodies
- ✓ Crop Tops
- ✓ Leggings
- ✓ And more!





OUT FRONT[®]
THEATRE COMPANY

Out Front Theatre Company was established to tell stories of the LGBTQIA+ experience and community, giving voice to LGBTQIA+ artists through theatre.

INSIGHTFUL

INNOVATIVE

INCLUSIVE

Learn more at:
OutFrontTheatre.com