



Written and Directed by Blake Fountain

DECEMBER 11-21, 2025

#OutFrontMammaDearest



Production Sponsors
**Ivette and Kelcy
LópezFreeman**

www.OutFrontTheatre.com

A Note from Paul



Welcome to the Holiday Season at Out Front! If you have been here before, welcome back! (You know *exactly* what you are in for here.) If you are new to our one-of-a-kind style of wacky winter wonderfulness, you are in for a treat like you probably have never seen before on stage.

This year marks the third time the iconic Joan Crawford has graced our theater in December, so she can now officially be put right next to Santa, Rudolph and Frosty as a quintessential holiday character; granted you may not want her visiting you in the middle of the night or hanging around the children in your life, but she is our own unique tradition.

Traditions are the things that make getting together with loved ones and community so special, and those traditions don't have to fit into any specific box or societal norms. As queer people, and allies of the queer community, we have been creating our own traditions for generations that span all year. It can be anything from hosting a brunch every year before the Pride parade, or gathering friends in costume to watch the Tony Awards. Maybe it's an annual trip with a group from across the country to your favorite vacation destination, or it could be something more regular - like getting a group together to see the shows at your favorite, local queer centered theatre company. Whatever traditions you have, we are glad you are here with us tonight and hope our holiday show (or any/all of our shows) will make it onto your list of traditions.

The new year is almost here and that always gives us hope of starting new. I don't know how new we will get in 2026, but I do know that we are going to be here to make you smile and laugh all year long and for years past that.

My hope for each of you is that you stay safe, healthy and truly fabulous this holiday season and for the rest of time.

Making the Yuletide as Gay as Humanly Possible,



Paul Conroy (*He/Him/His*)
Founder & Producing Artistic Director
Out Front Theatre Company



WRITTEN AND DIRECTED BY
Blake Fountain

STARRING

Emily Nedvidek, Anna Dvorak, Bekah Medford, Hope Clayborne,
Jack Caron, Erica Lloyd, Rafael Sochakov, Hayden Rowe, Will Cole,
Spencer Perdeck, Leah Thomas, TJ Ruth

MUSIC DIRECTOR
Devin Porter

CHOREORAPHER
Atarius Armstrong

**PRODUCTION
STAGE MANAGER**
Lily Mayfield

**LIGHTING
DESIGNER**
Lindsey Sharpless

**COSTUME
DESIGNER**
Berkeley Pillay

**WIG
DESIGNER**
Brian Jordan

**SCENIC
DESIGNER**
Cody Russell

PROPS DESIGNER
Charlie Edwards

SOUND DESIGNER
John Michael Hoke

DRAMATURG
Elliott Folds

ANY VIDEO AND/OR AUDIO RECORDING OF THIS PRODUCTION IS STRICTLY PROHIBITED.



**MAYOR'S OFFICE OF
Cultural Affairs**



This program is supported in part by Georgia Council for the Arts through the appropriations of the Georgia General Assembly. Georgia Council for the Arts also receives support from its partner agency - the National Endowment for the Arts. This program is supported in part by the City of Atlanta Mayor's Office of Cultural Affairs. Funding for this program is provided by the Fulton County Board of Commissioners.



SETTING:

Dean Martin's
Catalina Island
Beach Home

TIME:

1967

THERE WILL BE ONE

15-MINUTE INTERMISSION.

CAST

Joan Crawford.....Emily Nedvidek
Christina Crawford.....Anna Dvorak
Judy Garland.....Bekah Medford
Eartha Kitt.....Hope Clayborne
Bette Davis.....Jack Caron
Liza Minnelli.....Erica Lloyd
Fernando.....Rafael Sochakov
ChiquititaHayden Rowe
Visitor.....Will Cole
Understudies.....Spencer Perdeck,
Leah Thomas, TJ Ruth

CREATIVE TEAM

Director & PlaywrightBlake Fountain
Music DirectorDevin Porter
ChoreographerAtarius Armstrong
Production Stage Manager.....Lily Mayfield
Lighting DesignerLindsey Sharpless
Costume Designer.....Berkeley Pillay
Wig DesignerBrian Jordan
Scenic DesignerCody Russell
Props Designer/
Asst. Stage Manager.....Charlie Edwards
Sound DesignerJohn Michael Hoke
Dramaturg.....Elliott Folds
Asst. Sound EngineerAdjoa Farr
Master Carpenter.....Delaney Hill
Carpenter.....De'Janna Scales-Hand
Scenic ArtistsCody Russell, Jackie Lenz
PhotographerSydney Lee
VideographerSaturnblu Productions
Public RelationsJMF Communications
Graphic Designer.....Brandon D Hunt

SPECIAL THANKS TO Aurora Theatre, Nancy Byrd, Peter Bjerkerot.

We apologize for anyone who may have been accidentally omitted from this program.



Musical Numbers

ACT ONE

"Mamma Dearest"	Company
"Dear Christina"	Houseboys and Christina
"The Liquor Takes It All"	Judy
"Super Cougar"	Eartha, Houseboys, Christina, and Judy
"Mommy, Mommy, Mommy"	Company

ACT TWO

"Blowing Me, Blowing You"	Houseboys
"S.O.B."	Joan and Houseboys
"Say I Do"	Company
"Christmas Tree"	Company
"Mega Mix"	Company

Director/Playwright's



When I first started writing *Mamma Dearest! Here We Joan Again*, I thought I was just writing a campy holiday parody. Something loud, messy, and fun: part *Mamma Mia*, part *Mommy Dearest*, and all chaos. But somewhere between Joan's shoulder pads and Christina's quiet heartbreak, I realized I was actually writing about something deeper: how blood doesn't define us, and how sometimes survival means building the family we deserved long before we ever found it.

I grew up with complicated family dynamics (to put it mildly). For a long time, I thought survival meant pretending everything was fine. But the older I got, the more I understood that humor is its own kind of armor, and sometimes, it's the only language that makes sense of pain. *Mamma Dearest* became a way to laugh at the darkness, to take the melodrama I inherited and turn it into something glittering and alive.

At its core, this show isn't about Joan Crawford, or ABBA, or even Christmas. It's about chosen family: the beautiful, chaotic people we gather around us when the ones who were supposed to love us didn't know how. It's about reclaiming the narrative, finding joy after survival, and realizing that sometimes healing looks like a chaotic little family of legends, houseboys, and queer weirdos who absolutely should not work together on paper but somehow do.

If you leave the show a little lighter, a little gayer, or a little more convinced that your own trauma can turn into art, you've already found the spirit of *Mamma Dearest*.

With love and a touch of madness,

Blake Fountain (He/Him/His)
Director and Playwright

COMMITMENTS & VALUES

MISSION

Out Front Theatre Company's mission is to tell LGBTQIA+ (Lesbian, Gay, Bisexual, Transgender, Queer, Questioning, Intergender, Asexual) stories.

VISION

Out Front Theatre Company's vision is to strengthen the LGBTQIA+ community in Georgia by exploring and celebrating the universal human experience through the lens of gender and sexuality.

EQUALITY, DIVERSITY, & INCLUSION COMMITMENT

The staff and board of Out Front Theatre Company want to put the following metrics in place so that we can track them to completion. We want our stakeholders and our patrons to see real results.

- We want to have representative board members from black and brown communities, as well as gender nonconforming representatives and increase that representation by at least 10% every year until we reach a goal of above 50%.
- We want to produce, support, or promote at least 2 shows/events from creatives of color every year and increase that number by at least 20% every year.
- We want to increase our presence in communities of color and in women's communities through intentional outreach. We can do this by creating a communication strategy to expand our patronage. To that end, we will recruit a community outreach intern or staff member to help achieve this goal.
- We want to increase our intersectional involvement by partnering with other socially progressive nonprofit organizations to collaborate on community events. The goal is to have at least one partner event per year with an ultimate goal of three per year.

Please visit
www.OutFrontTheatre.com
to learn more.



LAND ACKNOWLEDGMENT

We are gathered on the unceded land of the Mvskoke (Muscogee/Creek) peoples. We ask you to join us in acknowledging the Mvskoke community, their elders both past and present, as well as future generations. Out Front Theatre Company also acknowledges that it was founded upon exclusions and erasures of many Indigenous peoples, including those on whose land this institution is located.

This acknowledgment demonstrates a commitment to beginning the process of working to dismantle the ongoing legacies of settler colonialism.



THE MUSCOGEE NATION

**For more information on this nation,
as well as how to support to them,
please visit www.muscogeenation.com**

CAST & CREW BIOS

CAST

EMILY NEDVIDEK *She/Her* (Joan Crawford) is reprising her role as Joan Crawford for the third time, and is thrilled to be terrorizing audiences at Out Front once again! You may have previously seen her as Mrs. Cratchit in *Murder on the Polar Express*, Female Authority Figure in *Hairspray*, or Bettina Barnes in *Psycho Beach Party*. Select Atlanta credits include: *Mac|Beth* and *Legacy of Light* (Synchronicity), *Alabama Story* and *Bullets Over Broadway* (Georgia Ensemble Theatre), and *Wizard of Oz* (Atlanta Lyric). She holds a Masters in Classical Acting from LAMDA, but you'd never know it with the choices she's making in this show. Thanks to Mark and her family for their never-ending love, the cast for putting up with her shenanigans, and Blake and Paul for keeping her employed!

ANNA DVORAK *She/Her* (Christina Crawford) is thrilled to be back at Out Front for the holidays. She's spent previous holiday shows here as Elsa in *Murder on the Polar Express*, Young Joan in *Christmas Dearest*, and Judy Garland in *Christmas with the Crawfords*. You may also recognize her as Judy Denmark in *Ruthless!*, or as Kira/Clio in *Xanadu*. Other select credits include: Amelie in *Amelie* (Horizon Theatre Company), Sonya in *Natasha, Pierre and the Great Comet of 1812* (Horizon Theatre Company), Marie Baker in *The Pretty Pants Bandit* (Georgia Ensemble). Anna holds a BFA in Musical Theatre from the University of Florida. When she is not on stage, she serves as the Director of Education at Ztunes Music. Thank you for spending your holiday supporting local, live, queer theatre! We're so happy you're here!

BEKAH MEDFORD *She/Her* (Judy Garland) thinks there is no place like Out Front for the holidays! Out Front Credits: *Murder on the Polar Express* (Match Girl) & *SnowGirls* (Ice Crystal). Previous credits: *Spelling Bee* (StageDoor); *Housewives of Marietta*, *Charlie Brown*, *Lucky Stiff* (MTC); *Junie B. Jones*, *One Slight Hitch* (GET); *Romeo and Juliet* (Shakespeare on Draught); *The Student Body* (Destination); Character performance at Disney World. She is represented by Heyman Talent. Follow her adventures @bekmedford

HOPE CLAYBORNE *She/Her* (Eartha Kitt) Is elated to grace the Out Front stage for a fifth time! Previous Out Front credits include: Kathy/Violet U/S (performed) in *9 to 5*, Berdine in *Psycho Beach Party*, Lorraine/Dynamites U/S in *Hairspray*, and Suzy Snowflake in *Murder on the Polar Express*. Previous Atlanta credits include Cassie in *Rhythm & Thread* (Alliance Theatre), Abilene in *The Melvin Invention* (Alliance Theatre), and Cleo in *The Game* (Horizon Theatre Co.). She is extremely grateful for this opportunity and hopes you enjoy the show. Thank you for supporting live theatre!

JACK CARON *He/Him* (Bette Davis) is thrilled to be back on the Out Front stage! Previous Out Front Theatre credits include: *Psycho Beach Party* and *Murder on the Polar Express*. Jack loves poop, fart, and cum jokes! His favorite word is GOON. Have a merry Halloween, gays! Instagram: @jackcaron

ERICA LLOYD *She/Her* (Liza Minnelli) is ecstatic to make her Out Front debut! Years of being told there's a resemblance to Ms. Minnelli and one viral Halloween costume of Liza trying to turn off a lamp has led her to this moment... Erica has recently been seen as Miss Scarlet in *Clue: Onstage* (Marietta Theatre Company), June in *Smoke on the*

CAST & CREW BIOS (CONTINUED)

Mountain (Strand Theatre), and the female swing for **The Cottage** (Stagedoor Theatre). Before moving to Atlanta, she played several iconic villains and princesses at Disney World and sang in Diagon Alley at Universal Studios Orlando. She loves life here with her wonderful boyfriend Shane, found family, and the two sweetest cats in the world!
IG: @ericajlloyd

RAFAEL SOCHAKOV *He/Him* (Fernando) is beyond ecstatic and deeply grateful to make his Out Front Theatre: Debut—and his first-ever show in ATL! New York credits include **Teen Angel** (Off-Broadway), **RENT**, **Ragtime**, and **Footloose**. Endless love to his Stella Adler family, the Robertson and Sochakov clans, and his beautiful chosen family for over a decade of unwavering support, guidance, and growth. I love you all!
Instagram: @rafael_sochakov

HAYDEN ROWE *He/Him* (Chiquitita) is so excited to be making his Out Front Theatre debut!! Other Atlanta credits include **Cabaret** (Actor's Express), **Natasha, Pierre, & The Great Comet of 1812**, **Once** (Horizon Theatre), **Bullets Over Broadway** (GET), **Tarzan**, **Jekyll & Hyde** (Atlanta Lyric). Thank so much to his Mom & Dad who he told not to come see this show! Enjoy!!

WILL COLE *He/Him* (Visitor) See creative team bio.

SPENCER PERDECK *He/Him* (Understudy) Out Front Theatre: Debut. Previous Atlanta credits include **Third Act Dating** (Impact Theatre), **Clue** (The Academy), **The Dybbuk** (ATL Fringe), **Cabaret** (Renegade), **An Evening with the Fitzgeralds** (ATL Original Works). Additional credits include **Elegies** (Edinburgh Fringe Festival), **The Golem**, **Meet Me in St. Louis**, and **Gross Indecency** (NYU). Spencer is

endlessly grateful to his family and friends for being his constant support system, and sends immense gratitude to Blake, the cast, and the Out Front team for all the laughter and joy creating this piece together.
IG: @spencerperdeck

LEAH THOMAS *She/Her* (Christina/Liza Understudy) is elated to be making her Out Front Theatre debut! Leah is an Actress, Teaching Artist, and Atlanta native. Previous Atlanta Theatre Credits Include: **Birthday of the World** (Alliance Theatre), **The Humans** (Theatrical Outfit), **And Then They Came for Me** (Georgia Ensemble Theatre), and **Rooted** (Horizon Theatre). Leah is excited to be joining the cast of Out Front's next production, **BLKS**, as That Bitch on the Couch. Theatre Education and Performance BFA, Emerson College. As always, love and gratitude to her wonderful family and friends, C, and Sammy. IG: @lleahthomass / www.leahthomas.net

TJ RUTH *He/Him* (Understudy) is thrilled to be back on the Out Front stage! Previous Out Front Theatre credits include: **Psycho Beach Party**, **Kinky Boots**, and **Boys in the Buff**. TJ would like to thank Out Front Theatre for continuously providing a space for him to play and perform. TJ would also like to thank all his family and friends for all of their love and support!

CREATIVE TEAM

BLAKE FOUNTAIN *He/Him* (Director and Playwright) is tickled senseless to debut the world premiere of his first original show, **Mamma Dearest! Here We Joan Again**, at his favorite theatre. What began as a campy, irreverent holiday romp unfolded into a deeply personal story about healing, humor, and chosen family. Sharing this chaotic,

CAST & CREW BIOS (CONTINUED)

heartfelt, ABBA-infused fever dream with this extraordinary cast, team, and audience is truly one of the greatest joys of his career. Blake is also an actor and has appeared on Out Front's stage in several productions, including *Hairspray*, *Trick!*, and *Ruthless!*, as well as at many other Atlanta-area theatres. In his dwindling free time, he also makes waves as his drag persona, Tugboat. She is the current reigning Georgia Entertainer of the Year FI and can be found flouncing hither and thither, singing her campy heart out. Love to Nana, Sam, Butter and Bean.

IG: @nonsmokingpartyoftwo
& @tugboatthequeen

DEVIN PORTER *He/Him* (Music Director) is delighted to be back at Out Front! Previously at Out Front Theatre: *9 to 5* (Tinsworthy), *Trick! The Musical* (Keys 2). Select Atlanta credits include: Keys 1 for *The Producers* and *The Color Purple* (City Springs Theatre Company), Keys 2 for *Sweeney Todd* and *Falsettos* (Actor's Express), Keys 2 for *Mamma Mia!* and *Beautiful* (Aurora Theatre), Piano/Conductor for *1776* (The Legacy Theatre) and *The World Goes 'Round* (LaGrange College). Follow him @p.devinshire on Instagram.

ATARIUS ARMSTRONG *He/Him* (Choreographer) Out Front Theatre: *Hairspray*, *Kinky Boots*, *The Prom*. Atlanta: Actor's Express, Act 3 Theatre, Atlanta Lyric Theatre, Aurora Theatre, City Springs Theatre, Fuerta Dance, Admix Project. Regional: Tulane Summer Lyric Theatre (New Orleans), Dixon Place (NYC) Other: Artistic Director and Founder of ALA Dance. His choreography has also been presented regionally in partnership with Dance Canvas, Fly on a Wall, CDC Fest, and White Wave Dance. Education: BFA in Musical Theatre Performance from the University of Mississippi. Follow him on Instagram @atariusarmstrong | atariusarmstrong.com

LILY MAYFIELD *She/Her* (Production Stage Manager) is delighted to spend her first Out Front Christmas working on *Mamma Dearest! Here We Joan Again*. Previous Out Front Theatre credits include: *9 to 5 The Musical*, *Trick! The Musical*, and *At the Wedding*. Previous Atlanta credits: *A Christmas Story* (Theatrical Outfit), *The Game* (Horizon Theatre), *Passing Strange* (Theatrical Outfit), *The Humans* (Theatrical Outfit), *Tiny Beautiful Things* (Theatrical Outfit), *The White Chip* (Theatrical Outfit and Dad's Garage). She also participated in the Theatrical Outfit Tom Key Arts Leadership Apprenticeship Program with a focus in directing the 22/23 season.

LINDSEY SHARPLESS *She/Her* (Lighting Designer) It's the most wonderful time of the year! Lindsey is so excited to be back for her 3rd holiday show at Out Front! Previous Out Front Theatre credits include: *Immediate Family*, *Murder on the Polar Express*, *SnowGirls*, and *warplay*. She worked professionally as a touring stage manager until 2016 and has since worked as a freelance lighting designer and stage manager around the city.

CHARLIE EDWARDS *She/Her* (Props Designer/Assistant Stage Manager) is back at Out Front Theatre! Past shenanigans here include *9 to 5* (ASM), *Hairspray!* (Tammy), *Trick!* (ASM), *The Prom* (ASM), and *Psycho Beach Party* (ASM/Gorilla Double... yes, really). Outside of Out Front, she was recently seen in *Blood Wedding* with Atlanta City Theatre. Charlie served two terms as the president of Atlanta City Theatre Players at Georgia State University, where she produced and directed shows such as *Mythos*, *ACTP Holiday Spectacular*, and more. She is a senior at Georgia State University, majoring in interdisciplinary studies concentration in acting. When not at school, she can be found teaching musical theatre at the Alliance

CAST & CREW BIOS (CONTINUED)

Theatre. Catch her on Instagram @char.renee04.

JOHN MICHAEL HOKE *He/Him* (Sound Designer) Out Front Theatre: Debut! Select sound design credits include *West Side Story*, *The Wizard of Oz* (San Pedro Playhouse), *A Raisin in the Sun*, *The Boys in the Band* (The Classic Theatre of San Antonio), *Maddi's Fridge*, *Eddie & Vinnie*, *The Big Friendly Giant*, *The Velveteen Rabbit* (The Magik Theatre), *Speech and Debate*, *The Crucible* (Texas State University). John Michael is a multidisciplinary theatre artist and a recent transplant from Austin, Texas. He is an actor, sound designer, composer, photographer, and audio engineer, and is constantly looking for new opportunities to create theatre. Johnmichaelhoke.com.

ELLIOTT FOLDS *He/Him* (Dramaturg) is an Atlanta-based dramaturg, actor, and educator who is always delighted to be back at Out Front. He has worked as a dramaturg on multiple Out Front productions, including *9 to 5*, *Hairspray*, *The Prom*, *Psycho Beach Party*, *Ruthless!*, *All the Natalie Portmans*, and *Xanadu*. As dramaturg and actor, he has worked at Alliance Theatre, Actor's Express, Stage Door Theatre, Synchronicity Theatre, and Woodstock Arts. Thanks to the *Mamma Dearest* crew, especially Blake and his sick, sick mind. ILY CB!

WILL COLE *He/Him* (Assistant Director) is so excited to assistant direct alongside Blake Fountain, as well as be back on the Out Front stage! Out Front Theatre: *Hairspray*, *The Prom*. Previous credits: *Deliverer* (Jennie T. Anderson Theater), *Wilderness* (The Breathe Project, Miami), *The Comeback Cabaret* (The Drama Company, NYC), *The Wild Party* (Next Act), *Fly By Night* (Little Blue Playhouse) & *9 to 5* (Thespian Troupe 3670). Film/TV: *The Happiness Playbook* (Lifetime), *A Man In*

Full (Netflix, Regina King, Dir.) *6888* (Tyler Perry Studios), & *OddsMaker* (Nashville Film Festival). Will thanks his agent Carol Shaginaw, his representation Six O'Clock Studios, his voice coach of 11 years Carrie Madsen, as well as his chosen family for always showing up, loving him fully, and cheering him on! Instagram: @willrcole



Make the Yuletide



Celebrating the Chaos of the Holidays at Out Front Theatre Company

Out Front Theatre Company may be the only place in Atlanta where you can see a holiday musical featuring Judy Garland, Eartha Kitt, and Bette Davis, but founding and producing artistic director Paul Conroy is quick to clarify that in the national theatre landscape, they are not alone. Theaters across the country produce campy, crass comedies this time of year. Call it counterprogramming, if you like, against the more traditional productions that dominate stages in December, like *A Christmas Carol* or *The Nutcracker*.

For example, if you find yourself in Provincetown this holiday season, you can treat yourself to the Gold Dust Orphans' production of *Sweeney Claus: The Demon Father of Sleet Street*. In Chicago, Hell in a Handbag Productions is staging *The Real Housewives of the North Pole*. In other words, the chaotic and irreverent *Mamma Dearest! Here We Joan Again* isn't just a big gay Christmas party: it's part of a grand theatrical tradition.

"As queer people, we need to make our own traditions," Conroy says about Out Front's holiday programming. "These traditions just tend to run a little counterculture." Citing the work of queer theatre pioneers Charles Ludlam and Charles Busch and highlighting Gold Dust Orphans founder Ryan Landry, Conroy likens these shows – silly and raunchy as they are – to a relay race. "We're another company keeping the flame lit. Atlanta doesn't really have anything else like it."

It's a rock-solid recipe: take a known property or two, then mash it together with some Christmas iconography. Of course, it helps if your ingredients are already beloved by the queer community, as is the case with *Mamma Dearest!*, which sees Joan Crawford belting out ABBA tunes like her studio contract depends on it. "If you know Mommie Dearest at all coming into the show, you're 70% of the way there," Conroy says. "If you know *Mamma Mia!*, there's another 20%. The last 10% is the chaos onstage."

Dramaturgy

Chaos is an apt word to describe Out Front's holiday shows, which have become a regular haunt for fearless actors with a penchant for improv. Adaptability is necessary for shows like these, which rely heavily on physical comedy, impossibly quick costume changes, and dozens of props. "Our holiday shows feel like the island of misfit toys," Conroy says. It feels especially fitting that **Mamma Dearest!** was written and directed by Blake Fountain, an audience favorite and veteran of Out Front's December slot. "We would not have let anyone other than Blake write and direct this one," says Conroy. "He's the Baron of Christmas, or something."

Mamma Dearest! marks Out Front's first original holiday show since 2018, when Conroy wrote and directed **The Ethel Merman Disco Christmas**

Spectacular! And while **Mamma Dearest!** may have first occurred to Fountain as the setup of a joke, the comfort and joy this musical is sure to bring to audiences is serious business. Out Front continues its dedication to centering and highlighting queer joy and resilience all year long, but that feels especially important during the holidays. After a long, exhausting year, it's a time for community, for found families, and for celebration. It's also a time for divas from Hollywood's golden age, alarmingly sincere Swedish pop songs, and dirty jokes. Whether they're riffing on **Showgirls** or **The Golden Girls**, whether they star Joan Crawford or Ethel Merman, productions like **Mamma Dearest!** are part of a beautiful, necessary tradition. Thanks for being here to share it with us.

— Elliott Folds, dramaturg



Award-Winning Design

Done in-house and *on-budget*.

Brandon D Hunt

Materializing ideas through design.

PRINT • DIGITAL • ILLUSTRATION • BRANDING

brandondhunt.com

(888) 239-5551



CONNECT WITH US!
#OutFrontMammaDearest

Facebook: [outfronttheatre](https://www.facebook.com/outfronttheatre)
Threads: [@outfronttheatre](https://www.threads.net/@outfronttheatre)
Instagram: [@outfronttheatre](https://www.instagram.com/outfronttheatre)
Snapchat: [outfronttheatre](https://www.snapchat.com/add/outfronttheatre)
Venmo: [@outfronttheatre](https://www.venmo.com/outfronttheatre)





WHO WE ARE

Out Front Theatre Company was established to tell stories of the LGBTQIA+ (Lesbian, Gay, Bisexual, Transgender, Queer, Intergender, Asexual) experience and community, giving voice to LGBTQIA+ authors, composers, artists, and creators through the medium of theatre and the performing arts. Out Front plans to develop new works and produce classic pieces of theatre that have communicated these stories of the LGBTQIA+ population to a wider audience over time.

As a non-profit organization with a dedicated focus to better the LGBTQIA+ population, we strive to:

- **Produce** established works and premiere productions created by members of the LGBTQIA+ society,
- **Generate** productions with universal themes which are important to the LGBTQIA+ community,
- **Educate** the populous to LGBTQIA+ history,
- **Work** with local and national LGBTQIA+ organizations to bring awareness of issues facing the LGBTQIA+ to the greater Atlanta area,
- **Create** artistic and educational opportunities for at-risk LGBTQIA+ youths by collaborating with local educational institutions and organizations,
- **Expand** the number of theatrical opportunities for artists who are members of or who support the LGBTQIA+ community.

Out Front hopes to create a narrative that will reach beyond the stage, into the

conversations and minds our audiences and artists. Theatre's power as a catalyst to spur dialogues goes back thousands of years. Out Front lives to continue that grand tradition of bringing the stories of the LGBTQIA+ people into the spotlight.

LGBTQIA+ Definitions

L stands for Lesbian: Term used to describe female identified people attracted romantically, erotically, and/or emotionally to other female identified people.

G stands for Gay: Term used in some cultural settings to represent male identified people who are attracted to other male identified people in a romantic, erotic and/or emotional sense. Also, a term used to refer to the LGBTQIA+ community as a whole or as an individual identity label for anyone who does not identify as heterosexual.

B stands for Bisexual: A person emotionally, physically, and/or sexually attracted to people of more than one sex and/or gender. This attraction does not have to be equally split between genders and there may be a preference for one gender over others.

T stands for Transgender: A person who lives as a member of a gender other than that expected based on anatomical sex. Sexual orientation varies and is not dependent on gender identity. This term is sometimes used to refer to the gender variant community as a whole.



STAFF AND BOARD LIST

Out Front Theatre Company Staff

Paul Conroy (*He/Him*) -
Founder & Producing Artistic Director

Eve Krueger (*She/Her*) -
General Manager

Justin Kalin (*He/Him*) -
Associate Artistic Director

Brady Brown (*He/Him*) - Director
of Marketing & Communications

Sydney Lee (*She/Her*) -
Production Manager

Madison Grant (*She/Her*) -
Facilities Manager

Nathan Hayford (*He/Him*) -
Executive Administrative Assistant

Board of Directors & Officers

Collin Holder (*He/Him/His*) - Chairperson

Ivette LopezFreeman (*She/Her/Hers*) -
Vice-Chairperson

Jay Reynolds (*He/Him/His*) - Treasurer

Robert Hindsman (*He/Him/His*) -
Secretary

Blake Fountain (*He/Him/His*)

Christi Harold (*She/Her/Hers*)

Marie Anderson (*She/Her/Hers*)

Paul Radley (*He/Him/His*)

Peter Bjerkerot (*He/Him/His*)

Philip Davis (*He/Him/His*)

Charles Hicks (*He/Him/His*)

Q stands for Queer: An umbrella term, which embraces a matrix of sexual preferences, orientations, and habits of the not-exclusively-heterosexual-and-monogamous majority. Queer includes lesbians, gays, bisexuals, transpeople, intersex persons, and many other sexually transgressive explorers. The term is sometimes used as a sexual orientation label instead of 'bisexual' as a way of acknowledging that there are more than two genders to be attracted to, or as a way of stating a non-heterosexual orientation without having to state who they are attracted to.

I stands for Intergender: Intergender people have a gender identity that is in the middle between the binary genders of female and male, and may be a mix of both.

A stands for Asexual: A term describing individuals who do not experience sexual attraction or do not have interest in or desire for sex. Asexuality is different from celibacy, which means abstaining from sex. Asexuality is often viewed as a spectrum - meaning there are varying levels and identities regarding someone's emotional, spiritual and romantic attraction. The best way to refer to the asexual community is to use the umbrella term "ace" or "aces" as in the "ace community," which acknowledges that spectrum.

+ stands for Many Other Identifications including, but not limited to pansexual, genderqueer, polysexual, agender, androsexual, demisexual, and skoliosexual. We strive to be as inclusive as we can and know we can always improve.

Please visit outfronttheatre.com for a more expansive list of identities, sexualities, terms, resources and more

We welcome all humans, regardless of labels, and hope we celebrate and accept everyone regardless of how they identify.

ENGEL&VÖLKERS®



Unlock Your Real Estate Dreams with a Purpose: Supporting Out Front Theatre Together

Join me in supporting Out Front Theatre as we work together to fulfill your real estate aspirations! I'm committed to donating **20% of my commission** to Out Front Theatre in your name. Simply let me know you were referred by them. Feel free to reach out to me via call, text, or email any time.



Adam Parker | Your Local REALTOR®
1745 Peachtree Street, Suite T | Atlanta | GA 30309
M 404-849-9829 | O 404-845-7724
adam@evatlanta.com | adamparker.com

A Proud Member of AQuAA!



Atlanta Gay Men's Chorus (VoN)

Atlanta Women's Chorus (VoN)

Atlanta Freedom Bands

Atlanta Philharmonic Orchestra

OurSong Atlanta

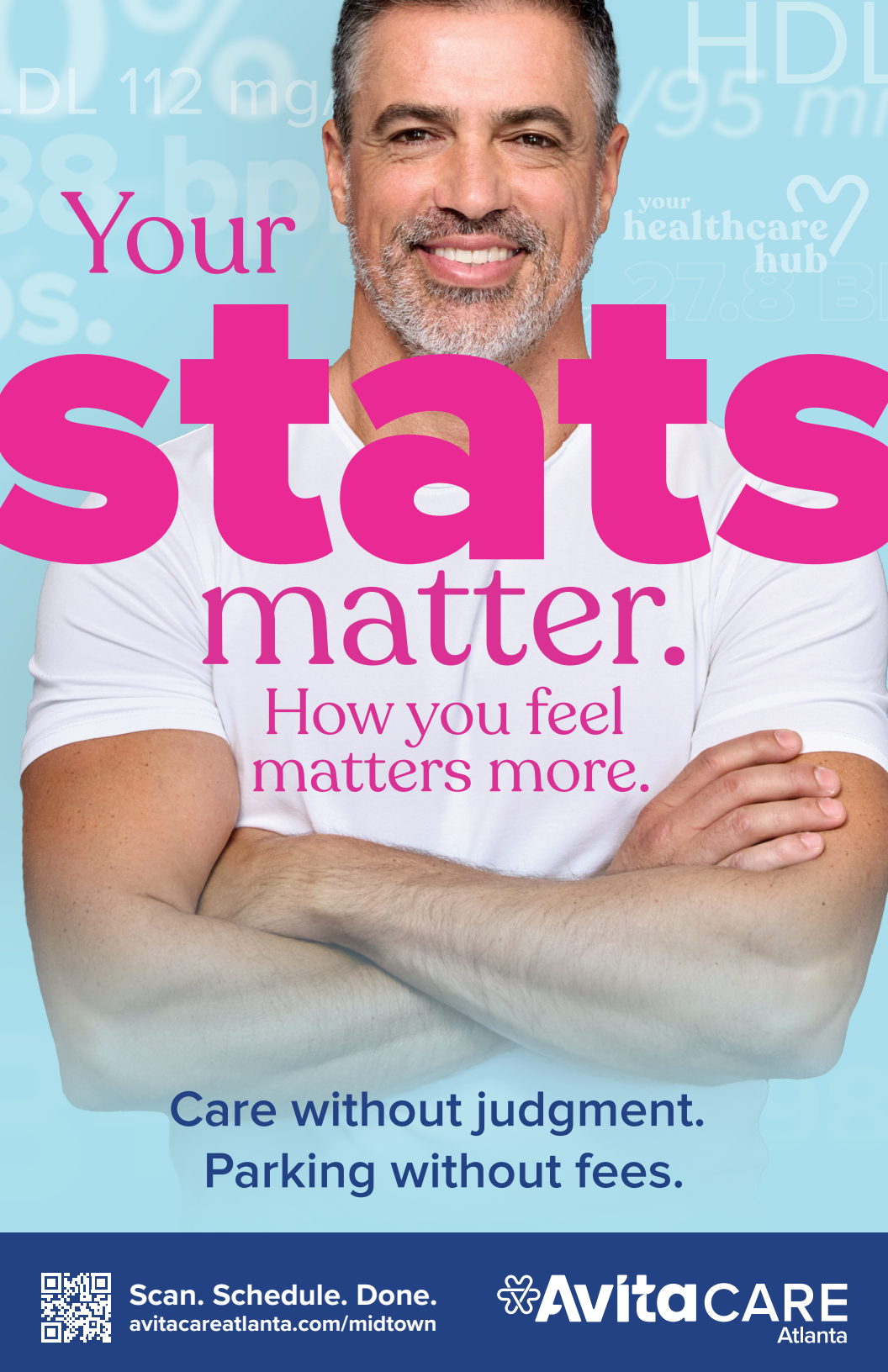
Out Front Theatre Company

Out on Film

Southern Fried Queer Pride

for more info and our calendar of events, visit

aquaa.org



LDL 112 mg/dL HDL 195 mg/dL
38 bpm
S.
27.8 BMI

Your
stats
matter.

How you feel
matters more.

Care without judgment.
Parking without fees.



Scan. Schedule. Done.
avitahealthatlanta.com/midtown

 **AvitaCARE**
Atlanta

The background image shows the interior of a Mexican restaurant. On the right, there is a long bar with a backlit wall featuring a vibrant, fiery orange and yellow pattern. The bar has a dark wooden frame and a colorful, patterned cushion along the top. Above the bar, several tall, decorative plants with long, thin leaves are illuminated with blue light. To the left, there is a large, ornate chandelier with many small lights, and a large potted plant. The overall atmosphere is warm and festive.

**Mexican Restaurant &
Artisan Market
In the Heart of
Castleberry Hill
since 1996**

No MAS!
THE BEST OF MEXICO

**180 Walker St SW Atlanta 30313 NoMasCantina.com
404-574-5678 Castleberry Hill**

A woman with dark, curly hair, wearing a red beret and a red strapless top, is looking over her shoulder. She has dramatic makeup, including large, dark eye makeup and red lipstick. She is wearing a long, dangling earring.

IF YOU KNEW SUZIE

JAN. 10 at 8PM



SPIRIT NIGHT

Mark your calendar and bring your appetite.

Place an order in-store and we'll share the proceeds

Out Front Theatre Company

Date

Sunday

December 14, 2025

Time

12-8 PM

**1055 Howell Mill Rd.
Suite 130**

Atlanta, GA 30318

**Mention your organization name at
the register and support your
community one taco at a time.**



Fundraiser offer valid only on the date(s), time(s), and at the Torchy's location identified above. Only 501(c) organizations and non-profit schools are eligible to participate in the Torchy's fundraising program. Torchy's will donate 15% (fifteen percent) of all qualifying food and beverage sales, including alcoholic beverages, to the organization. Tax, gratuity, gift card, and retail purchases are excluded from the donation. Offer only valid for dine-in and take-out orders placed in-store. Orders placed online, including at <http://torchystacos.com> and through third-party delivery sites, are not valid. Offer is void if flyer is distributed in or near the participating restaurant during the fundraising event. For more information about this charity or non-profit.



CONGRATS!

Here's to 10 more years of
queer stories on stage!



Donation Listing

Donations made between June 1, 2025 - December 4, 2025.

Out Front Theatre Company is a 501c3 non-profit organization. The health of the company depends on support from patrons just like you! All donations are 100% tax deductible and greatly appreciated! No gift is too small because it truly takes a community to make the arts thrive and grow.

We wouldn't be here without the support of the friends listed below and we would LOVE to add your name to our list of supporters! Donation information is available at the box office or at outfronttheatre.com.

THANK YOU FOR BEING A

friend



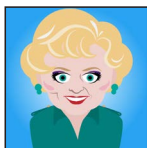
DOROTHY (\$5,000+)

Jay Reynolds and Michael Barnett
Dr. Hal Brody and Don Smith



MILES (\$100 - \$499)

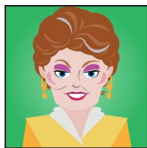
Anonymous
Lori & James
Matthew Bartel



ROSE (\$2,500 - \$4,999)

Marie and Jim Anderson
Philip Davis
Ivette and Kelcy LópezFreeman

Jeffrey Rakofsky and Ben Thorpe



BLANCHE (\$1,000 - \$2,499)

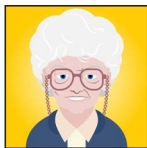
Ken Skalitzy
Peter Bjerkerot
Rob Dean and Rob Epstein

Murphy/Withrow Family

Diane Crow

Markus Shipley

Warren Gump



SOPHIA (\$500 - \$999)

Anonymous
David Starr
Whitney Johnson

Curt Stamp

Marian Meyers and Lauren Rich

Elaine Hendrix

Bo Beganovic & Blake McGaha

Joe Sequeria

Robin Newberg

Richard Vataris

Diane Haymes

Randal Lautzenheiser & David Vannort

Greg Barnard

Scott Adams

Wade Smith

Jefferson Sargent

David Bates

Kristine Sixkiller

David Olt

Mr. Steve Lashley

Melissa Miller and Trish Kennedy

Shari Carney

Mallory Gray

Richard Blackburn and Chris New

Mary Wood

Andrea Graham and Peter Biello

David Reingold

James Kingman, Unlimited Spectrum
Counseling & Wellness

John Nay

The Jessicas Giving Fund

Marianna B. Kaufman and Diana Maria
Alemán

Dan and Jermaine Britt

Mark S. King

Kink Down South

Susan Stiefel

Christopher Henry
Brennan O'Dell and Craig Kaplan
Joe Sequeria
Wayne Snipes



STAN
(\$1 - \$99)

Anonymous
David Farner
Gregory Chandler

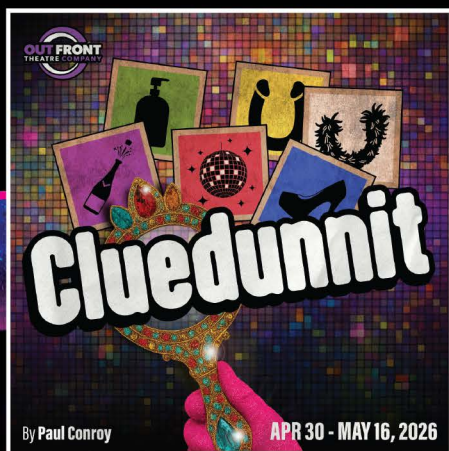
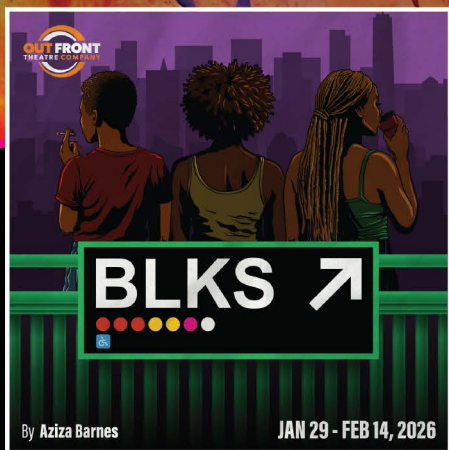
Gellin Hughes
Amry Leroux
Test Recurring Donation
Robert Frankson
Marc Legaspi
Julius Brown
Paige Sullivan
Richard Sanchez
Erin Ebdon
Charles Langley
Caroline Pilewski
Jimmy Ballard
Freya
Sam Waycaster
Huiling Chen
James McIntosh
Kat and Blu Motahari
Charles Wesolowski
Nora
Nick Balint
Sara and Jay Leopold
Glenn & Nick
Dan Shuman
Jeb Williams
Van Goodwin
Matt Fleck
Mary Fiorello
Gregory Hunter
Lori Peterson
Lucy Aquino
Matthew Watkins
NINA TALLY
Shane Arrington
Josh Laird

Jeremy McCain
Jon Santos
Karen Turney
Griffen Price
Jackson Shell
Robert Adames
Noel Page
Susan Coburn
Anna Dvorak
Sonny Hoang
Leonard Pallats
Randy D Adler
Bryan Carpenter
Frank Wrenn
Jennifer Palange
Matthew Busch
Michael J
Carl Charles
Arthur Lee Meadows Jr.
Dillion Everett
Carl Charles
Robert StGenis
Brittany Stewart
Victoria Frangoulis @ivfheadbands
Robert Allen





2025-2026 SEASON



OutFrontTheatre.com



SHOP OUR ONLINE STORE!



Get all your Out Front merch
only at OutFrontTheatre.com/shop



- ✓ TShirts
- ✓ Crop Tops
- ✓ And more!
- ✓ Hoodies
- ✓ Leggings

